

Deltek Open Plan® 3.5

Release Notes

May 4, 2015

While Deltek has attempted to verify that the information in this document is accurate and complete, some typographical or technical errors may exist. The recipient of this document is solely responsible for all decisions relating to or use of the information provided herein.

The information contained in this publication is effective as of the publication date below and is subject to change without notice.

This publication contains proprietary information that is protected by copyright. All rights are reserved. No part of this document may be reproduced or transmitted in any form or by any means, electronic or mechanical, or translated into another language, without the prior written consent of Deltek, Inc.

This edition published May 2015.

© Deltek, Inc.

Deltek's software is also protected by copyright law and constitutes valuable confidential and proprietary information of Deltek, Inc. and its licensors. The Deltek software, and all related documentation, is provided for use only in accordance with the terms of the license agreement. Unauthorized reproduction or distribution of the program or any portion thereof could result in severe civil or criminal penalties.

All trademarks are the property of their respective owners.

Contents

- Overview 1
- Pre-Installation Information..... 2
 - Custom Programming 3
- If You Need Assistance 4
 - Customer Services 4
 - Customer Care Connect Site 4
 - Available Documentation 5
- Enhancements..... 7
 - Microsoft Project Import/Export Improvements..... 7
 - Improved User Authentication and Security Features 11
 - Network View Enhancements 12
 - Improvements to the Error Messages on Calculated Fields 13
 - Graphical Indicator for Click to Sort 13
 - Display Field Names When Hovering Over Column Header 14
 - Expanded Range of Color Choices in Views 14
 - Owner Delegate Role 14
 - OLE Automation Enhancements 14
 - Performance Improvements..... 15
 - Displaying Selected Baseline Name 15
- Software Issues Resolved 16
 - Descriptions of Software Issues 16
- Database Changes 24
 - New Tables 24
 - Deleted Tables 24
 - New Columns Added..... 24
 - Changes to Existing Columns 24

Overview

Welcome to Deltek Open Plan 3.5 Release Notes. These release notes contain a summary of the following:

- Pre-Installation Information
- Major New Features
- Enhancements
- Software Issues Resolved
- Database Changes

Pre-Installation Information

Before you begin the installation of Open Plan 3.5, it is important to understand the information discussed in this section.

- Open Plan is compatible with the following IPM products:
 - Deltek WelcomHome™ 5.0
 - Deltek Cobra™ 5.1.2, 5.1.3
 - Deltek PM Compass 2.2 (PMC 2.2 is planned for release later this year. Check the compatibility when it is released)
 - Deltek Acumen Suite 5.1, 6.0 (Fuse, Risk, and 360)



Open Plan users who are integrating data with these products must ensure that the products are upgraded to the compatible versions.

- The following software requirements (Database Tier) have been tested for compatibility and are fully supported by Open Plan:
 - Operating System
 - Windows Server 2012 R2
 - Windows Server 2012
 - Windows Server 2008 R2
 - Windows Server 2008
 - Database Platform
 - Oracle 12c R1, 11g R2
 - Microsoft SQL Server 2014, 2012, 2008 R2
 - Microsoft Access (with the Microsoft Jet 3.51 or 4.0 OLE DB Provider)
- The following software requirements (Client Tier) have been tested for compatibility and are fully supported by Open Plan:
 - Operating System
 - Windows 8.1
 - Windows 8
 - Windows 7
 - Windows Terminal Services/Citrix
 - Windows Server 2012 R2
 - Windows Server 2012
 - Windows Server 2008 R2
 - Windows Server 2008
 - Integration Products (Optional)
 - Microsoft Project® 2013, 2010, 2007

Custom Programming

Before you upgrade to Open Plan 3.5:

- Review all existing custom work at least eight weeks prior to your intended go-live date.
- Compare your custom work to the new functionality being provided in this release.
- If this new version possesses the functionality contained in your custom work, these custom programs may no longer be needed. If the functionality contained in your custom work is not provided in this release, you must ensure the custom work remain intact through the upgrade process.
- Identify any hot fixes or patches that you plan to deploy with your Open Plan 3.5 upgrade. Ensure that, following the hot fix or patch deployment, you retain all custom functionality.
- Deltek strongly recommends that when upgrading, you first deploy an instance of Open Plan 3.5 in your test environment. This allows for functional UAT (User Acceptance Testing) to ensure that all mission critical custom features are still available to the user community. Typical deployments call for a 30 – 45 day test period before upgrading into your production environment.



Deltek's Technical Services team is available to support you as you plan for this upgrade. We offer both technical and custom services, ensuring the best possible Deltek experience. If you would like consulting assistance, contact your Deltek account representative.

If You Need Assistance

If you need assistance installing, implementing, or using Open Plan, Deltek makes a wealth of information and expertise readily available to you.

Customer Services

For over 30 years, Deltek has maintained close relationships with client firms, helping with their problems, listening to their needs, and getting to know their individual business environments. A full range of customer services has grown out of this close contact, including the following:

- Extensive self-support options through the Customer Care Connect Web portal.
- Phone and email support from Customer Care analysts
- Technical services
- Consulting services
- Custom programming
- Classroom, on-site, and Web-based training



Find out more about these and other services from the Customer Care Connect site.

Customer Care Connect Site

The Deltek Customer Care Connect site is a support Web site for Deltek customers who purchase an Ongoing Support Plan (OSP).

The following are some of the many options that the Customer Care Connect site provides:

- Search for product documentation, such as release notes, install guides, technical information, online help topics, and white papers
- Ask questions, exchange ideas, and share knowledge with other Deltek customers through the Deltek Connect Customer Forums
- Access Cloud specific documents and forums
- Download the latest versions of your Deltek products
- Search Deltek's knowledge base
- Submit a support case and check on its progress
- Transfer requested files to a Customer Care analyst
- Subscribe to Deltek communications about your products and services
- Receive alerts of new Deltek releases and hot fixes
- Use Quick Chat to submit a question to a Customer Care analyst online



For more information regarding Deltek Customer Care Connect, refer to the online help available from the Web site.

Access Customer Care Connect

To access the Customer Care Connect site, complete the following steps:

1. Go to <http://support.deltek.com>.
2. Enter your Customer Care Connect **Username** and Password.
3. Click Log In.



If you forget your username or password, you can click the **Account Assistance** button on the login screen for help.

Available Documentation

Release notes and other guides are available for this release. You can download these documents in two ways.

Deltek Software Manager

The Documents tab in Deltek Software Manager lists all of the documents associated with a release and lets you download the ones that you want.

To download documents, complete the following steps:

1. On the [Deltek Customer Care](#) site, click the Product Downloads tab, then select **Launch Deltek Software Manager**.
2. When the Deltek Software Manager opens, highlight a release in the left pane.



Do **not** enter a check next to the release name or click **Add to Download Queue**. If you do so, you will download the software as well as any documentation that you want.

3. Click the Documents tab to display a list of available documents for the release.
4. Select the documents that you want.
5. Click **View Download Queue** to see a list of documents that you selected.
6. Click **Download**.

Customer Care Site Enterprise Search

Use the search feature to find specific documents or to see a list of all documents associated with a release. Then open or download the ones that you want.

To download documents, complete the following steps:

1. On the [Deltek Customer Care](#) site, click **Enterprise Search**.
2. Select **Release Documentation** as the **Source**.
3. Perform one of the following actions:
 - To see a list of all available documentation for a release, enter the product and release number (for example, **Vision 7.4**) in the search field.
 - To find a specific document, enter a description of the document (for example, **Vision 7.4 release notes**) in the search field.

4. Click on the document, and then choose to open or save it.

Enhancements

This section includes summaries of the enhancements made to existing features in this release.

Microsoft Project Import/Export Improvements

The following enhancements were made on the Microsoft Project Import and Export feature:

- **Import Enhancements:**
 - Import now creates or updates the PMB Baseline.
 - On import, if you are creating a new project in Open Plan, a PMB baseline will be created if the baseline has been set in the MSP project you are importing.
 - If importing to an existing Open Plan project, you have an option to update the PMB baseline if it exists
 - Importing now reads MSP time-phased resource details and will create multiple resource assignments, if needed to accurately represent the time phasing of the resource in MSP.
 - Importing writes the Task UID to the activity, and the Resource UID to the Resource when importing. This allows the data to be aligned when exporting back to the original files in MSP. It also improved the subsequent importing of data to the same OP project and resource file.

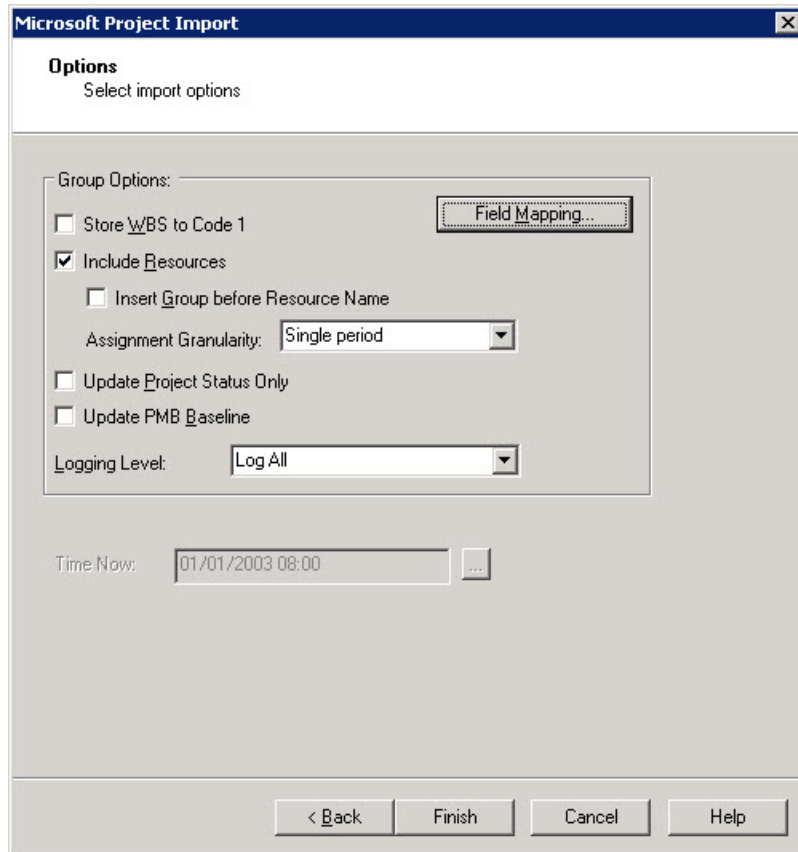
- Depending on whether you want to import into a new Open Plan project from Microsoft Project or update an existing Open Plan file, the **Microsoft Project Import Wizard – Options** page will display different options.
- Creating a new project while importing a project from Microsoft Project, the available options are the following:

The screenshot shows the 'Microsoft Project Import' dialog box with the 'Options' tab selected. The dialog is titled 'Microsoft Project Import' and has a close button (X) in the top right corner. Below the title bar, the text 'Options' is displayed, followed by the instruction 'Select import options'. The main area of the dialog is divided into several sections:

- Group Options:** This section is enclosed in a rounded rectangle and contains:
 - Store WBS to Code 1: A checkbox with a 'Field Mapping...' button to its right.
 - Include Resources: A checked checkbox.
 - Insert Group before Resource Name: An unchecked checkbox.
 - Assignment Granularity: A dropdown menu currently set to 'Single period'.
 - Update Project Status Only: An unchecked checkbox.
 - Update PMB Baseline: An unchecked checkbox.
 - Logging Level: A dropdown menu currently set to 'Log All'.
- Share Calendar File: An unchecked checkbox with an empty text field and a browse button (three dots) to its right.
- Share Resource File: An unchecked checkbox with an empty text field and a browse button (three dots) to its right.
- Share WBS File: An unchecked checkbox with an empty text field and a browse button (three dots) to its right.

At the bottom of the dialog, there are four buttons: '< Back', 'Next >', 'Cancel', and 'Help'.

- Updating an existing project from the imported Microsoft Project data, the available options are the following:



- If you select **Store WBS to Code 1** and the project you are importing into has other code files attached, you can use the **Field Mapping** dialog to store the WBS to another code file by mapping it.
- Export Enhancements:**
 - Export to MSP now supports updating an existing MSP Project when you are exporting Status.
 - When you specify the name of the file to be exported to MS Project and it already exists, you are given the option to overwrite it.
If you want to replace it or update the status in it, select **Yes**. You will be given the option to choose **Create/replace** or **Update status only** mode on the **Options** page.
 - When exporting Status, any user mapped fields will also be exported. Any new activities will be exported
 - Export now writes resource assignment data as MSP time-phased resources which provides better modeling of Open Plan offsets and periods, spread curves, and multiple assignments of a resource to one activity.
 - You will see this in MSP just as you see any resources there today.
 - When not using MSPRIF Compatibility, export now supports task progress based on the **Progress Type** and **Progress Value** fields in Open Plan. This includes:

- **Percent Complete** — we write out the activity percent complete
- **Remaining Duration** — we write the remaining duration
- **Actual Dates** — we write the user entered dates if they exist for in progress and completed activities. If the activity is progress and a required actual date is missing we write the planned date for that value to MSP.

Elapsed duration and Expected finish dates are not directly translated to MSP. They are exported as percent completes.



For more information, see the [Microsoft Project Export – Options Page](#) section of the *Deltek Open Plan 3.5 User Guide*.

- Exporting records the Task UID and Resource UID of activities and resources that are exported on the Open Plan data (if they were not already known from the import).
 - When exporting to existing MSP data, the Task and Resource UIDs are used to lookup data for updating in MSP.
 - If activities or resources do not have current MSP UIDs, those values are stored after exporting which requires the OP project to be saved.
 - If OP data have UIDs and we are unable to find matching data in existing MSP files, the UID value is reset to Zero. We do not delete data from Open Plan that is not found in MSP.
 - There is a new option on the Export dialog to automatically save the Open Plan data to ensure any UID values updated in Open Plan are saved.
- Export now supports an Activity filter when you are updating status in an existing MSP file.
 - If you are exporting Status to an existing MSP file you can choose to export a filtered set of activities (along with associated resource assignments)
 - New activities that meet the filter criteria will also be exported
- Export now includes an option to maintain MSPRIF (MSPRIF was a former Add In to Open Plan) compatibility. This affects the following data:
 - Resource assignments are exported as they were in OP 3.4.1 as totals over the activity duration.
 - Activity progress is exported based on the Computed Status field and includes Actual Start, Actual Finish and for completed activities the Percent Complete is set to 100%.
 - The task duration in MSP is adjusted to match the planned dates so that MSP does not recalculate the exported dates.
- Exporting resources now supports exporting resource progress when not in MSPRIF compatible mode.
 - When available you can choose to export resource assignment remaining quantities or resource assignment physical percent completes to MSP.

All options are stored for re-use in option groups. There is a selection at the bottom of the export screen to load options or specify the group name to save options.



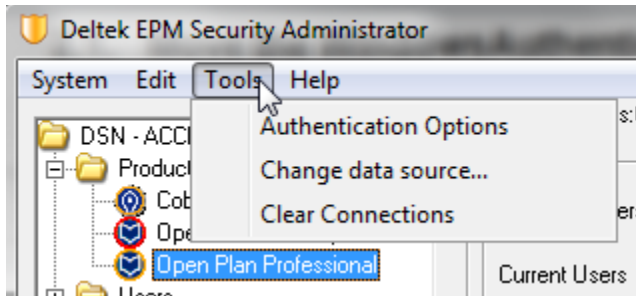
For more information, see the [Database Changes](#) section.

Improved User Authentication and Security Features

Open Plan 3.5 adds support for additional Windows authentication options and provides a new user interface to configure login options, and other security features.

EPM Security Administrator

To access the new **Authentication Options** dialog box, select a product in the products list and then select **Authentication Options** from the **Tools** menu.



This dialog box is read-only for Open Plan Desktop. All Open Plan options are configured through Open Plan Professional, shared by Open Plan Desktop.

The **Authentication Options** dialog box allows you to configure how users are authenticated when they log in to Open Plan as well as options for audit logging.



Refer to the “Authentication Options Dialog Box” of the *EPM SA Help System* for more information about these new settings.

Network View Enhancements

The enhancements for the Network view are summarized below:

- **Conditional Formatting**
You can customize the display of the activity boxes for the Network View by using the Conditional Formatting dialog box.
- **Activity Box Properties**
 - Font settings can be individually defined for each cell. This overrides the default global view font.
 - Text in the fields is dynamically wrapped, without truncation of data.
 - Activity boxes can now be set to become varied in sizes or can be set to conform to a fixed size when wrapping text.
 - Truncation behavior can now be defined for the activity boxes.
- **Relationship Box Properties**
 - Relationship Attribute box properties, such as font and text placement can be modified with greater control.
- **Annotation Box Properties**
 - Annotation Box properties, such as font type, size, color; box border shape and color; and box position (vertical, horizontal, and spacing) can now be formatted.
- **Activity Box Formatting**
 - Activity boxes can be configured to display in different colors and/or shapes based on a specified value that was set.

- User-defined symbols, such as symbols used in conditional formatting or attributes can be placed in Activity Boxes.
- Placements
 - The vertical and horizontal spacing between activities can now be defined.
 - Display interface activities (or immediate predecessors and successors of filtered activities, whether they meet the set filter criteria or not) can now be shown.
 - When printing or plotting a chart, the auto-fit page functionality is now available in order for plots to be made to scale to fit one page.
 - A warning message displays in the event that rendering will take a long time to complete. A progress dialog box is also displayed while the process is running. This gives the user the option to cancel the process.
 - Bridge lines are clearly defined, indicating that a particular crossover is not related to the path being crossed.
 - Logic lines are displayed with minimal crossovers.
 - Screen rendering now only takes less than 5 seconds to complete.
- Time Scale
 - Box sizes can be made to display in a uniform size or based on the duration, whether Time Scaling is enabled or not.
 - Time Scale formatting can be set, such as size, shape, color, and line placement. This is similar to Reporting Calendars in GANTT views.
 - y-axis page height can be shortened by specifying the height of PERT boxes. The user-defined box height is constant for all boxes.
- Other
 - Activity boxes are retained and displayed properly, without splitting and crossing page boundaries.
 - Splitting Activities across page breaks. Accept or Reject individual activities. Accept or Reject 'All'. (Needs more information)

Improvements to the Error Messages on Calculated Fields

Error messages when defining calculated fields have been improved in the following dialog boxes:

- Calculated Field Expression
- Filter Expression
- User Defined Validation

Aside from the enhanced error message, the text being referenced is also be highlighted in the **Expression:** field.

Graphical Indicator for Click to Sort

When **Click to Sort** is enabled, a small arrow is now displayed when you click the column heading of a view, displaying the direction of the sort.

Activity ID	Activity Desc.	Duration	Total Float	Early Start	Early Finish
1	Environmental Management System	572d	0	02Jan03	15Mar05
1.06	Ambient Stress & Thermal Tests	18d	19d	18May04	10Jun04

This arrow only shows in display mode, not in Print Preview mode.

The status bar also displays the sort information that was applied.



Display Field Names When Hovering Over Column Header

When you hover over a column header, the tooltip shows the column header name. Previously, you had to double-click the field to launch the **Edit** dialog box in order to see the information such as Table Name, Field Name, Title, etc.

This is particularly useful when you have renamed the column in the view and want to find the source field.

Expanded Range of Color Choices in Views

You are now able to select colors beyond the existing 64 color choices and apply this to menus, buttons, dialog boxes, backgrounds, column headers, etc. You can also backup and restore the view to another environment, retaining the colors previously selected.

Owner Delegate Role

Open Plan now includes a new built in role named **OWNER_DELEGATE**. The owner delegate role allows the owner of an item to share the right to modify the access control settings of an item with trusted users or groups in an organization.



Refer to the [Define Group Profiles Overview of the EPM SA Help System](#) for more information about the new role.

OLE Automation Enhancements

Open Plan reports have been improved and view functionality has been made available through OLE Automation. The following lists the improvements made on the reports:

- Open Plan Application Level changes:
 - The printer to be used for the current Open Plan sessions can be set.
 - The page orientation and paper size to be used for the current Open Plan sessions can be set
- View Level changes:
 - Margins can be specified to be used in printing.
 - Expand All or Collapse All can be initiated for the corresponding Open Plan view.
 - A .JPG file of the snapshot of the view can be created. Table-related notes can be specified to be printed with the view.

- Line numbers can be printed out.
- Colors for column headings can be printed. You can also specify if columns are to be padded out to fill a printed page.
- The **ExpandAll** method was added to the OLE API so that users can expand views through OLE.
- For Barchart Views:
 - The legend can be printed anywhere in the printed output, depending on which location you specify.
 - The spreadsheet view can be included in the printed output.
 - The printed output can be made to fit a restricted number of horizontal pages.
 - The resource histogram can be included in the printout.
 - How the date range is to be calculated can be specified.
 - The autoscale range with custom dates can be set.
 - Custom dates for the print range can be specified.
 - How the date scale should be display can be set:
 - Fixed time units or reporting calendar divisions that determine how the date axis will be set up can be specified.
 - The number of axes to be displayed can be specified.

Performance Improvements

Performance improvements have been made in the following areas:

- Backup / Restore
- Save / Save As
- Opening Projects that contain foreign relationships

Displaying Selected Baseline Name

A new field has been made available on the Activity table, named Source Baseline. Whenever the Baseline Start and Finish fields on the activity are set, Open Plan also stores the name of the baseline from which they were set in the new field.



For more information, see the [Open Plan Online Help](#).

Software Issues Resolved

Descriptions of Software Issues

You will notice that the descriptions of some software defects contain extra information, including ways to work around the defects. For the most part, these issues were addressed before this release through hot fixes, and the additional information was developed to help you decide whether or not you needed to install the hot fixes.

When you install this release, you must install all fixes in the release; you cannot choose to install some and not others. Nevertheless, this additional information has been included in case you instituted some of the workarounds and can now stop using them, or you simply want more background information about the defect repairs.

Deltek Defect Tracking Number: 437445

Description: Shortcut keys (Link/Unlink Activities: Ctrl+F2, Schedule Driver Analysis: Ctrl+F3, and Trace Logic: Ctrl+F4) were added to the following views:

- Activity Spreadsheet View
- Activity Multi-Table Spreadsheet View
- Barchart View
- Network View
- Tornado View

Customers Impacted: This defect affects all Open Plan users.

Workaround Before Fix: Use the menu options.

Additional Notes: None.

Files Updated

OP30L409.dll

Deltek Defect Tracking Number: 466770

Description: Open Plan 3.4.0.1294 backup restored to Open Plan 3.4.0.1294 and had IDs Unavailable on some Code Files.

Customers Impacted: This defect affects all Open Plan users.

Workaround Before Fix: Use the backup option 'Create Open Plan 3.3 compatible backup' when creating the backup.

Additional Notes: None.

Files Updated:

Deltek Defect Tracking Number: 476353

Description: Backup/Restore now supports symbols.

Customers Impacted: This defect affects all Open Plan users.

Workaround Before Fix: None.

Additional Notes: None.

Files Updated:

Deltek Defect Tracking Number: 472205

Description: UN/CEFACT export of activities supports risk values when present. A second Export script has been provided for customers who want or need to export schedule risk information.

Customers Impacted: This defect affects all Open Plan users.

Workaround Before Fix: None.

Additional Notes: While these are optional elements, schedule risk analysis has become a standard requirement of contracts. The IPMR Did and UN/CEFACT schema provide options on how to export this data.

BestCaseDurationMeasure	DurationMeasure	Used when a three point remaining duration estimate is required for the task (monte carlo simulation) or for a user determined best case duration. Enter the task's best case duration along with the duration measure attribute such as "DAY".
MostLikelyDurationMeasure	DurationMeasure	Used when a three point remaining duration estimate is required for the task (monte carlo simulation) or for a user determined most likely duration. Enter the task's most likely duration along with the duration measure attribute such as "DAY".
WorstCaseDurationMeasure	DurationMeasure	Used when a three point remaining duration estimate is required for the task (monte carlo simulation) or for a user determined worst case duration. Enter the task's worst case duration along with the duration measure attribute such as "DAY".

Files Updated

IPMRFormat6r.xfr

Deltek Defect Tracking Number: 472119**Description:** When exporting MSP files, extended ASCII characters for filter results were exported when mapped to a Text field. (æ for True and É for False)**Customers Impacted:** This defect affects all Open Plan users.**Workaround Before Fix:** Create a calculated field that converts the results to text and export this calculated field instead. For example, iif(<FilterName> = [TRUE], 'TRUE', 'FALSE')**Additional Notes:** None.**Files Updated:****Deltek Defect Tracking Number:** 478486**Description:** When you updated an existing Open Plan project using MSP Import, field mappings from MSP fields to code fields other than C1 were not handled properly.**Customers Impacted:** This defect affects all Open Plan users.**Workaround Before Fix:** None.**Additional Notes:** None.**Files Updated:****Deltek Defect Tracking Number:** 437726**Description:** The following options were not displayed in Tornado view:

- Display Line Numbers in Spreadsheet
- Suppress Color in Spreadsheet Headings
- Expand Columns to Fill Page

This issue is encountered both in SQL and Oracle databases

Customers Impacted: This defect affects all Open Plan users.**Workaround Before Fix:** None.**Additional Notes:** None.**Files Updated:****Deltek Defect Tracking Number:** 437451**Description:** The following shortcut menu items were missing:

- Project » Time Analysis showed Ctrl+F9

- Project » Resource Schedule - did not show Ctrl+R
- Project » Risk Analysis - did not show Ctrl+K

Customers Impacted: This defect affects all Open Plan users.

Workaround Before Fix: None.

Additional Notes: Ctrl+Shift+R displays the Resource Scheduling dialog and Ctrl+Shift+K displays the Risk Analysis dialog.

Files Updated

OP30L409.dll

Files Updated:

Deltek Defect Tracking Number: 434606

Description: PMC Baseline Update did not proceed correctly, resulting to the following:

- Baseline dates were moved to the early dates, if not in progress
- If in progress, the baseline finish date is extended to the early finish date
- The existing budget after the status date is moved to span the new Baseline dates
- The change is applied as an adjusting entry
- There are no history budget changes

Customers Impacted: This defect affects all Open Plan users.

Workaround Before Fix: None

Additional Notes: None.

Files Updated

OPP30DLL.dll

OPP30.exe

OPD30.exe

PROCESSDLL2.dll

Deltek Defect Tracking Number: 461461

Description: In Open Plan 3.3 SP2 Cumulative Update 19, a new system option named **_REPLACEBASELINEBUDGETWITHACTUALS** was added to disable the default behavior where Actuals are used to populate Baseline Usage information for complete and in-progress tasks. The option was not honored for baselines based on schedule dates when the option is disabled.

Customers Impacted: This defect affects all Open Plan users.

Workaround Before Fix: None.

Additional Notes: The system option can be found in the **System Preferences** under **Tools » Tools » Options**. Select the **Advanced** tab and then click the **Defaults** button. The behavior is enabled by setting the new preference to a value of 0 (zero), effectively disabling the use of Actuals to update baseline usage. The existing behavior can be re-enabled by removing the

preference or setting the value to 1.

Files Updated

OPP30DLL.dll

Deltek Defect Tracking Number: 465366

Description: PMC Baseline Update process did not spread Baseline Resource Usage as expected on In-Progress Activities.

Customers Impacted: This defect affects all Open Plan users.

Workaround Before Fix: None.

Additional Notes: None.

Files Updated

OPP30DLL.dll

PROCESSDLL2.dll

Deltek Defect Tracking Number: 441396

Description: Duplicate warning messages were generated that validates the Actual Finish Date.

Customers Impacted: This defect affects all Open Plan users.

Workaround Before Fix: None.

Additional Notes: None.

Files Updated:

Deltek Defect Tracking Number: 3292

Description: No calendar set was specified on the subsection summary row resulting to incorrect values.

Customers Impacted: This defect affects all Open Plan users.

Workaround Before Fix: Use the calculated field expression with the calendar set you want to use: `(efdate,bfdate,iif(ACT_ID NOT_EMPTY,CLH_ID,""))`.

Additional Notes: None.

Files Updated:

Deltek Defect Tracking Number: 160731

Description: **Column** header was changed to its field name after you edited the values in the **Edit Column** dialog box.

Customers Impacted: This defect affects all Open Plan users.

Workaround Before Fix: Re-edit the information in the **Edit Column** dialog box.

Additional Notes: None.

Files Updated:

Deltek Defect Tracking Number: 438744

Description: **FAIL_EVALUATE()** did not work for **C1.DESCRPTION**.

Customers Impacted: This defect affects all Open Plan users.

Workaround Before Fix: None.

Additional Notes: None.

Files Updated:

Deltek Defect Tracking Number: 437441

Description: Open **Plan Explorer » Users** folder also showed Cobra and PMC users, aside from Open Plan users that logged in to the application.

Customers Impacted: This defect affects all Open Plan users.

Workaround Before Fix: None.

Additional Notes: None.

Files Updated:

Deltek Defect Tracking Number: 476952

Description: In Network View Placement settings, only some of the changes made were saved.

Customers Impacted: This defect affects all Open Plan users.

Workaround Before Fix: None.

Additional Notes: None.

Files Updated:

Deltek Defect Tracking Number: 437463

Description: Ctrl+C functionality did not work when you clicked to select a cell in Excel.

Customers Impacted: This defect affects all Open Plan users.

Workaround Before Fix: Select the text in the edit window above the spreadsheet to copy the text.

Additional Notes: None.

Files Updated:

Deltek Defect Tracking Number: 186743

Description: The Change Access Control dialog box listed all projects when the list is filtered to only show Project Templates.

Customers Impacted: This defect affects all Open Plan users.

Workaround Before Fix: None.

Additional Notes: None.

Files Updated:

OPP30.exe

Deltek Defect Tracking Number: 484340

Description: The message, "(31705) Duration may not be negative." was shown multiple times when you entered negative TimePhase resource assignments in Activity Details >> Resources dialog box.

Customers Impacted: This defect affects all Open Plan users.

Workaround Before Fix: None.

Additional Notes: None.

Files Updated:

OPP30.exe

OPD30.exe

Deltek Defect Tracking Number: 490100

Description: Microsoft Project did not correctly set actual dates and % complete during export.

Customers Impacted: This defect affects all Open Plan users.

Workaround Before Fix: None.

Additional Notes: None.

Files Updated:

Deltek Defect Tracking Number: 487748

Description: When using MSP 2013, Actual Start Dates did not display unless the % Complete field has been set to a value > 0 during MSP export.

Customers Impacted: This defect affects all Open Plan users.

Workaround Before Fix: None.

Additional Notes: None.

Files Updated:

Database Changes

This section includes the changes made to the database for this release.

New Tables

Table Name	Description
WST_CFG	Configuration Options

Deleted Tables


Table Name
None

New Columns Added

Table Name	Column name	Data Type
OPP_PRJ	MSP_GROUP_OPTS_ID	VARCHAR2(60)
OPP_PRJ	MSP_IMPEXP_OPTS	
OPP_ACT	SOURCE_BASELINE	NVARCHAR(10)

Changes to Existing Columns

Table Name	Column Name	New Data Type	Old Data Type
None	None	None	None



Deltek is the leading global provider of enterprise software and information solutions for professional services firms, government contractors, and government agencies. For decades, we have delivered actionable insight that empowers our customers to unlock their business potential. Over 14,000 organizations and 1.8 million users in approximately 80 countries around the world rely on Deltek to research and identify opportunities, win new business, optimize resource, streamline operations, and deliver more profitable projects. Deltek – Know more. Do more.®

deltek.com