

# Construction CPM Conference

## Performing a Critical Path Analysis

Presented by  
**Jonathan Japka, PMP**  
Japka Management  
Moorestown NJ

**Jonathan\_Japka@Japka.us**

# Critical Path - Agenda

---

- **Introduction**
- **Roles**
- **Definitions**
- **Analysis Methods**
- **Preparation**
- **Analysis with Primavera P6**
- **Avoiding Pit Falls**
- **Bonus: Color Coding Bars**
- **Questions**

# Jonathan Japka, PMP

---

- **16 years as independent consultant (2004 to present)**
  - Consigli, AstraZeneca, Lockheed Martin, Amtrak, Merck
  - 2008 Primavera Excellence Award  
Amtrak Engineering – lead designer
- **14 years with Primavera Systems PAR (1990 to 2004)**
  - ETRAC in Cherry Hill NJ
  - Certified Instructor and Implementation Specialist
- **Villanova Univ. Instructor (1998 to 2009)**
  - PMP Foundations Class Time and Cost Sections
- **PMP Certification since 1996**
- **Rutgers College of Engineering**
  - BS Civil Engineering
  - Specialization in Construction Management

# Start with a joke . .

---

# Start with a joke . .

---



Jonathan Japka, PMP

# Critical Path Roles

---

- **Scheduler**
  - **Perform Critical Path Analysis**
  - **Present Critical Path Report**
  - **Narrative**
- **Project Management**
  - **Consumer of Scheduler work**
  - **Are We Meeting Key Milestones?**
  - **What's Driving the Milestones?**
  - **Use to make decisions !!!**

# Critical Path Goals

---

**Use Report and Narrative  
to make decisions!**

**Story must be clear and concise!**

# Milestone Management

---

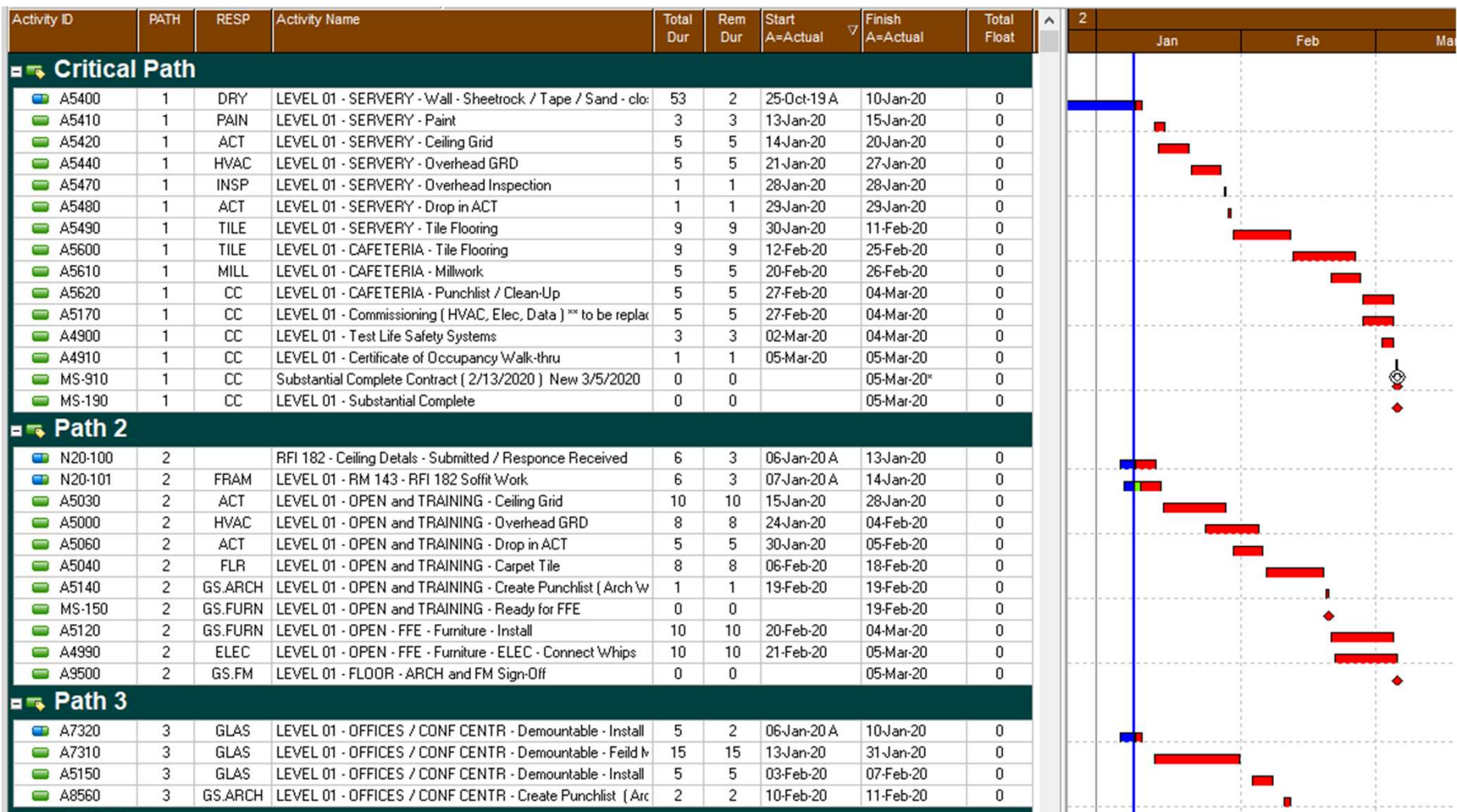
- **Pick Key Milestones**
- **Monitor those Milestones**

# Milestone Management

---

- **Pick Key Milestones**
- **Monitor those Milestones**
- **Critical Path(s)**
  - **Drives Milestones**

# Critical Paths to a Milestone



# Definitions

---

- **Critical Path Method**
  - Creating a logical network of activities
  - Assigning durations to each activity.
  - Flowing the network to calculate; Early dates, Late dates, and total float.
- **Total Float**
  - The difference between the late date minus the early date.
  - Amount of time a single task can be delayed without delaying project completion

# Definitions

---

- **Critical Path**

- **Path of activities with lowest float and determines the project completion date.**
- **Longest path of activities through a project**

- **Wikipedia definition**

- **Is the sequence of project network activities which add up to the longest overall duration, regardless if that longest duration has float or not.**
- **This determines the shortest time possible to complete the project.**
- **There can be 'total float' (unused time) within the critical path**

# Critical Path Analysis

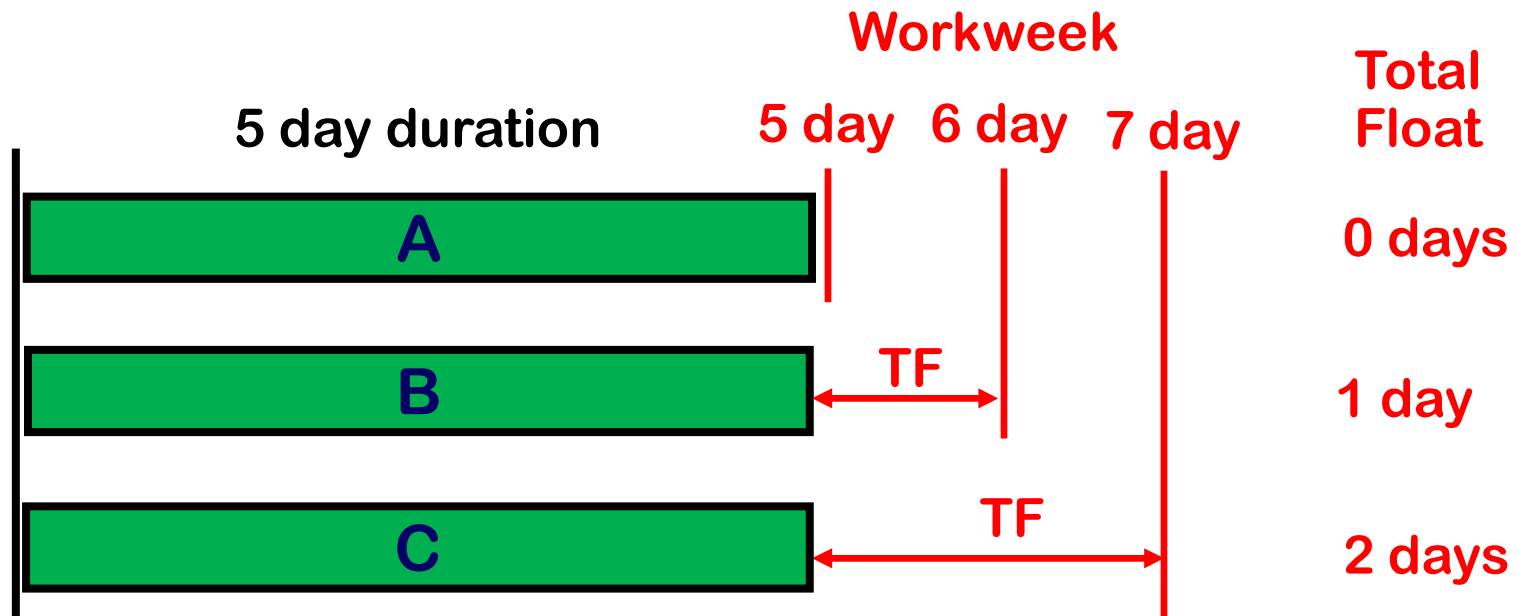
---

## Process of Identifying the Critical Path

- **Two basic methods**
- **Lowest Float**
  - Sort Activities by Total Float
  - Simple straight forward
  - Does not work with multiple calendars
  - Commingles Parallel Paths
- **Longest Path**
  - Follow Driving Predecessor
  - Only Top path

# Critical Path by Float

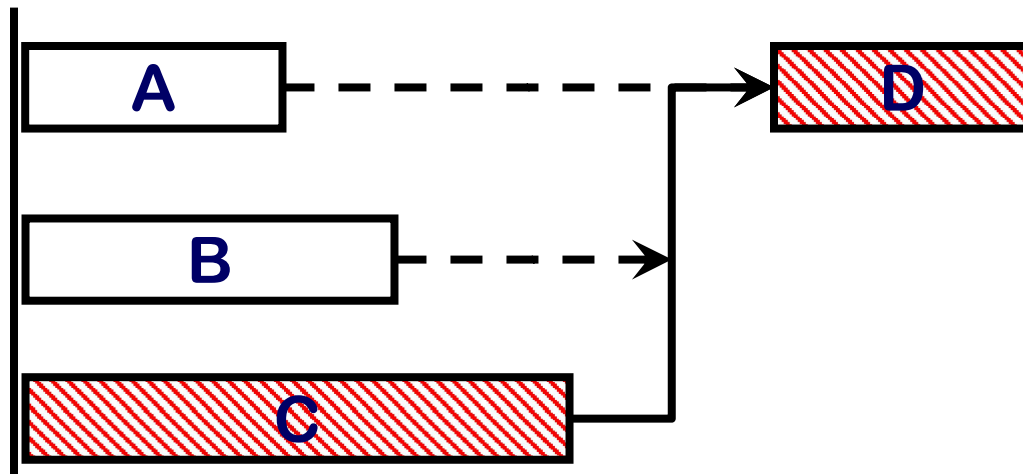
- **Lowest Float Method**
  - **Float is Calendar Dependent**
  - **Does not work with multiple calendars**



# Critical Path by Longest Path

---

- **Identifying Longest Path**
  - From the predecessor window
  - Find activity with latest finish
  - “Driving” Predecessor



# Preparation

---

- **Clean up all open ends**
  - **Activities without predecessor**
  - **Activities without successor**
- **Find with**
  - **Report, Filter, and/or Column**
- **Warning!!**
  - **Activities with just a Start-to-Start successor are open ends**
  - **Add a Finish-to-Start and/or Finish-to-Finish**
  - **Hard to find, export relationships to Excel**

# Preparation

---

- **Remove “Start On” and “Finish-On” Constraints**
  - Activities have zero float no matter what
  - Violates logic
- **Use Retained Logic schedule option**
  - Progress override creates open ends
- **Uncheck “Make open ends critical”**
- **Clean up Out-of-Sequence errors**
  - Find with Schedule “Log” Report
  - Driving predecessor can go “through” a completed activity and then hard to find

# Preparation

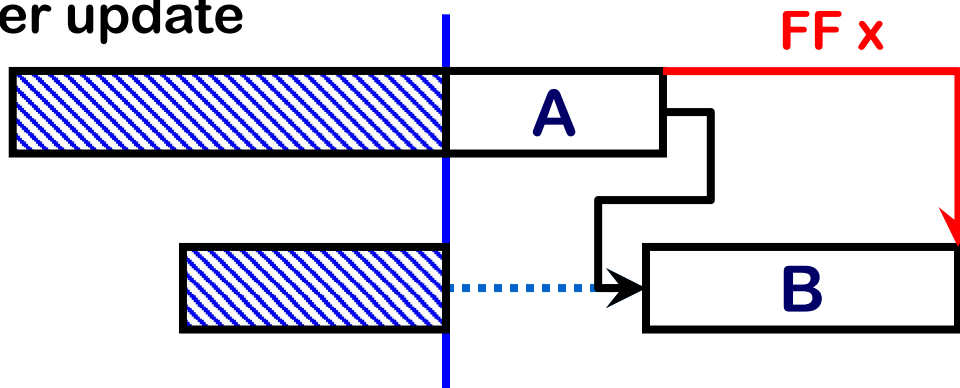
---

- What is an Out-of-Sequence Error?

Before



After update



- Remedy
  - Remove logic tie – just wrong, or
  - Replace with a Finish-to-Finish

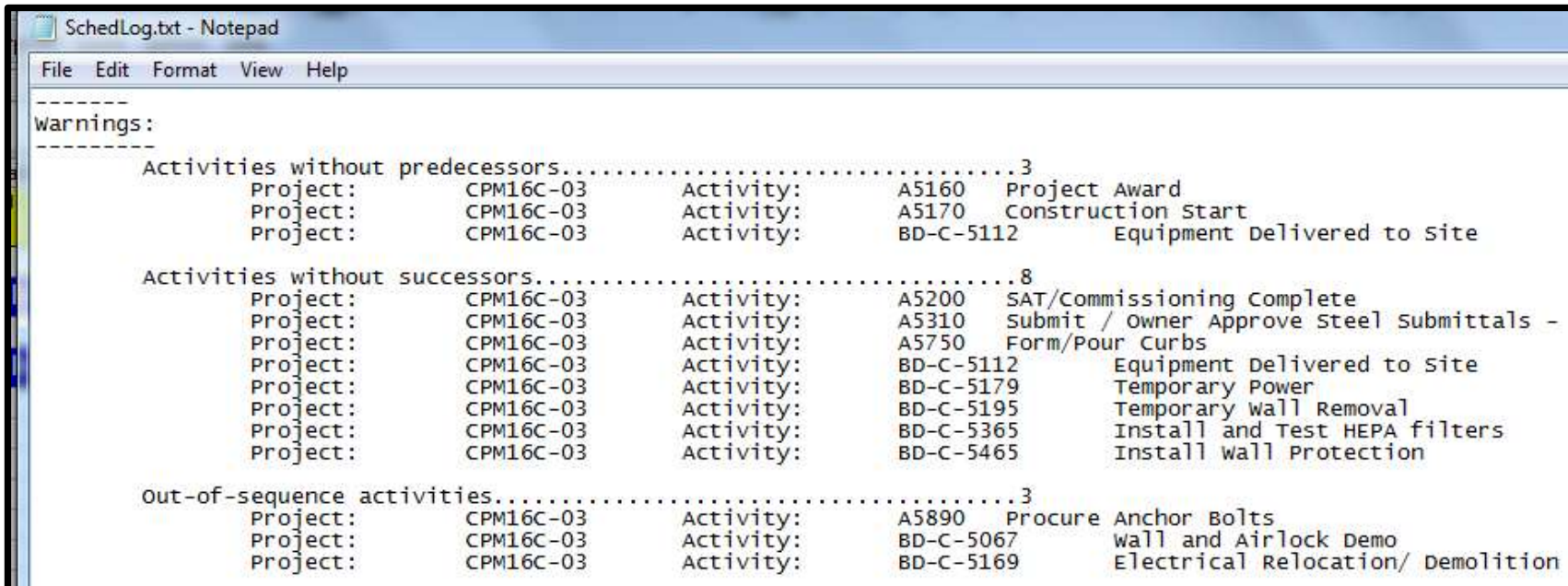
# Preparation

---

- **Follow Good Scheduling Practice**
  - **Do not use FS with a Lag**
  - **Do not use FS with Negative Lag**

# Preparation

- Log report ( Error report )



```
SchedLog.txt - Notepad
File Edit Format View Help
-----
Warnings:
-----
Activities without predecessors.....3
Project:      CPM16C-03      Activity:      A5160      Project Award
Project:      CPM16C-03      Activity:      A5170      Construction Start
Project:      CPM16C-03      Activity:      BD-C-5112      Equipment Delivered to Site

Activities without successors.....8
Project:      CPM16C-03      Activity:      A5200      SAT/Commissioning Complete
Project:      CPM16C-03      Activity:      A5310      Submit / Owner Approve Steel submittals -
Project:      CPM16C-03      Activity:      A5750      Form/Pour Curbs
Project:      CPM16C-03      Activity:      BD-C-5112      Equipment Delivered to Site
Project:      CPM16C-03      Activity:      BD-C-5179      Temporary Power
Project:      CPM16C-03      Activity:      BD-C-5195      Temporary wall Removal
Project:      CPM16C-03      Activity:      BD-C-5365      Install and Test HEPA filters
Project:      CPM16C-03      Activity:      BD-C-5465      Install wall Protection

Out-of-sequence activities.....3
Project:      CPM16C-03      Activity:      A5890      Procure Anchor Bolts
Project:      CPM16C-03      Activity:      BD-C-5067      Wall and Airlock Demo
Project:      CPM16C-03      Activity:      BD-C-5169      Electrical Relocation/ Demolition
```

# Let's go . . . .

---

- **First Method**
  - **Lowest Float**
- **Isolate Activities with a Filter**
  - **Hide Completed Activities**
  - **Hide Level of Effort**
  - **Hide WBS / Summary Activity**
- **Group by Total Float**


# Let's go . . . .

---

- **Second Method**
  - **Longest Path**
- **Isolate Activities with a Filter**
  - **Longest Path = Yes**
  - **Hide Level of Effort**
  - **Hide WBS / Summary Activity**
- **Group by Longest Path**

# Presentation with Primavera P6


---

 Filter

Filter Name: 01 Remaining Work

Display: Filter

Display all rows	Parameter	Is	Value	High Value
<input type="checkbox"/>	(All of the following)			
	Where Activity Status	is not equal to	Completed	

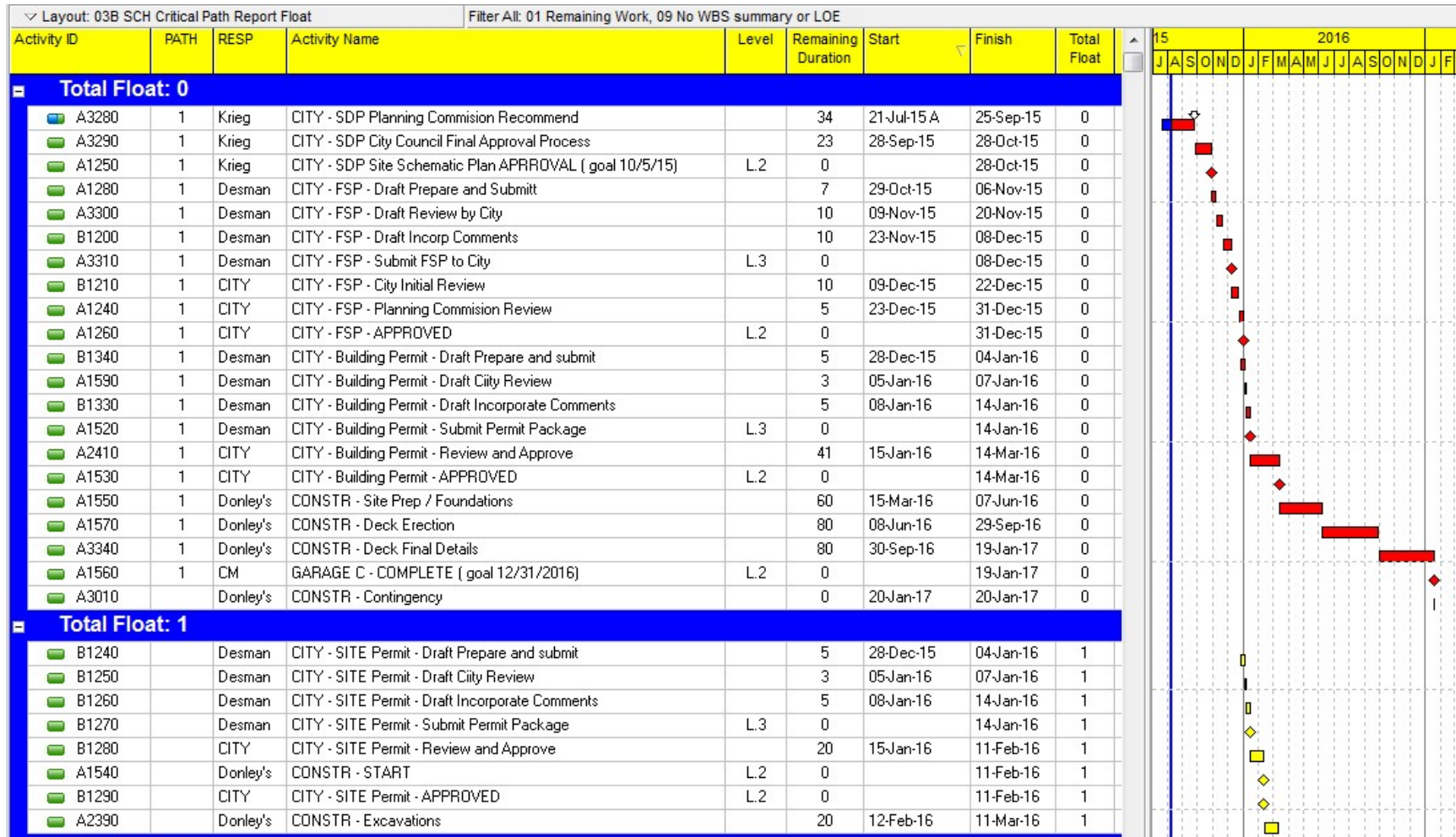
 Filter

Filter Name: 09 No WBS summary or LOE

Display: Filter

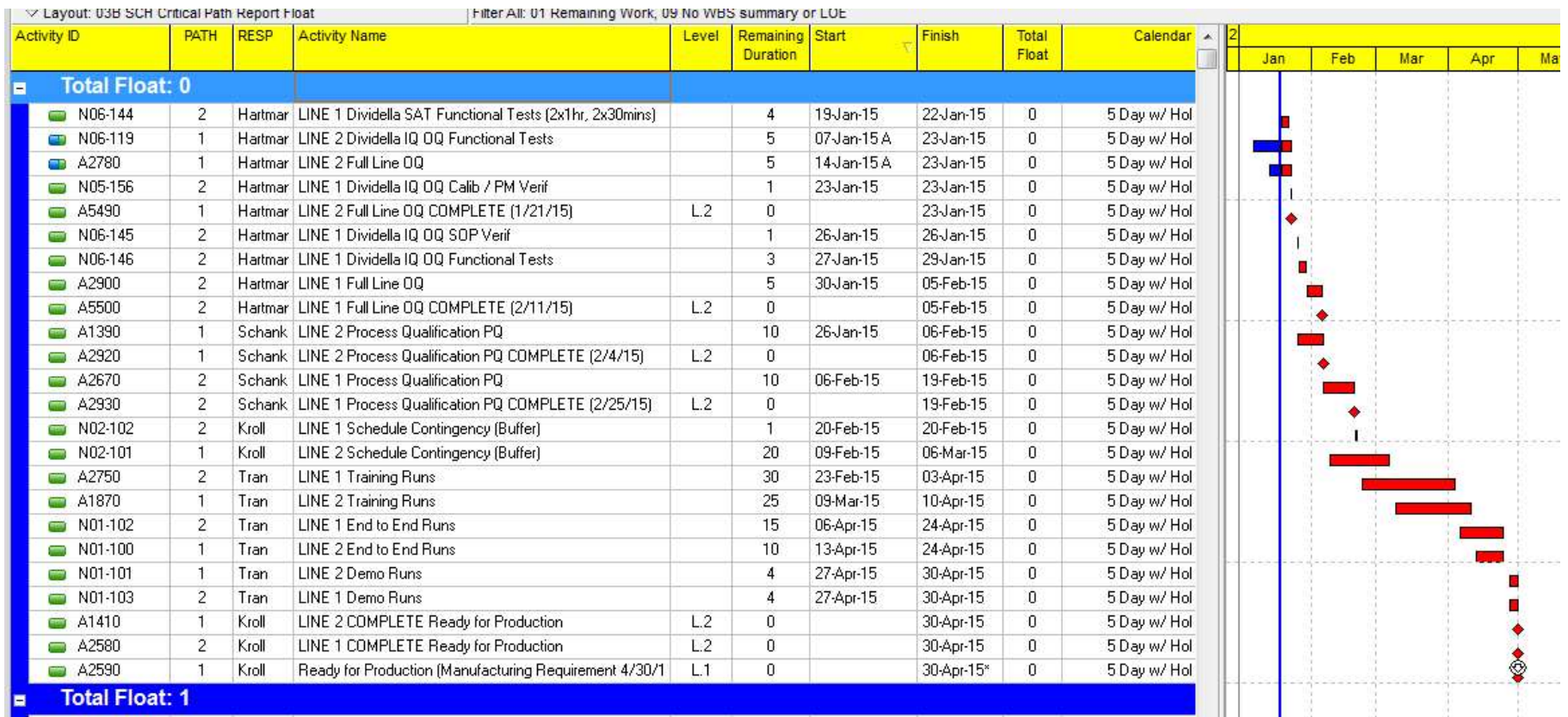
Display all rows	Parameter	Is	Value	High Value
<input type="checkbox"/>	(All of the following)			
	Where Activity Type	is not equal to	WBS Summary	
	And Activity Type	is not equal to	Level of Effort	

# Critical Path by Float



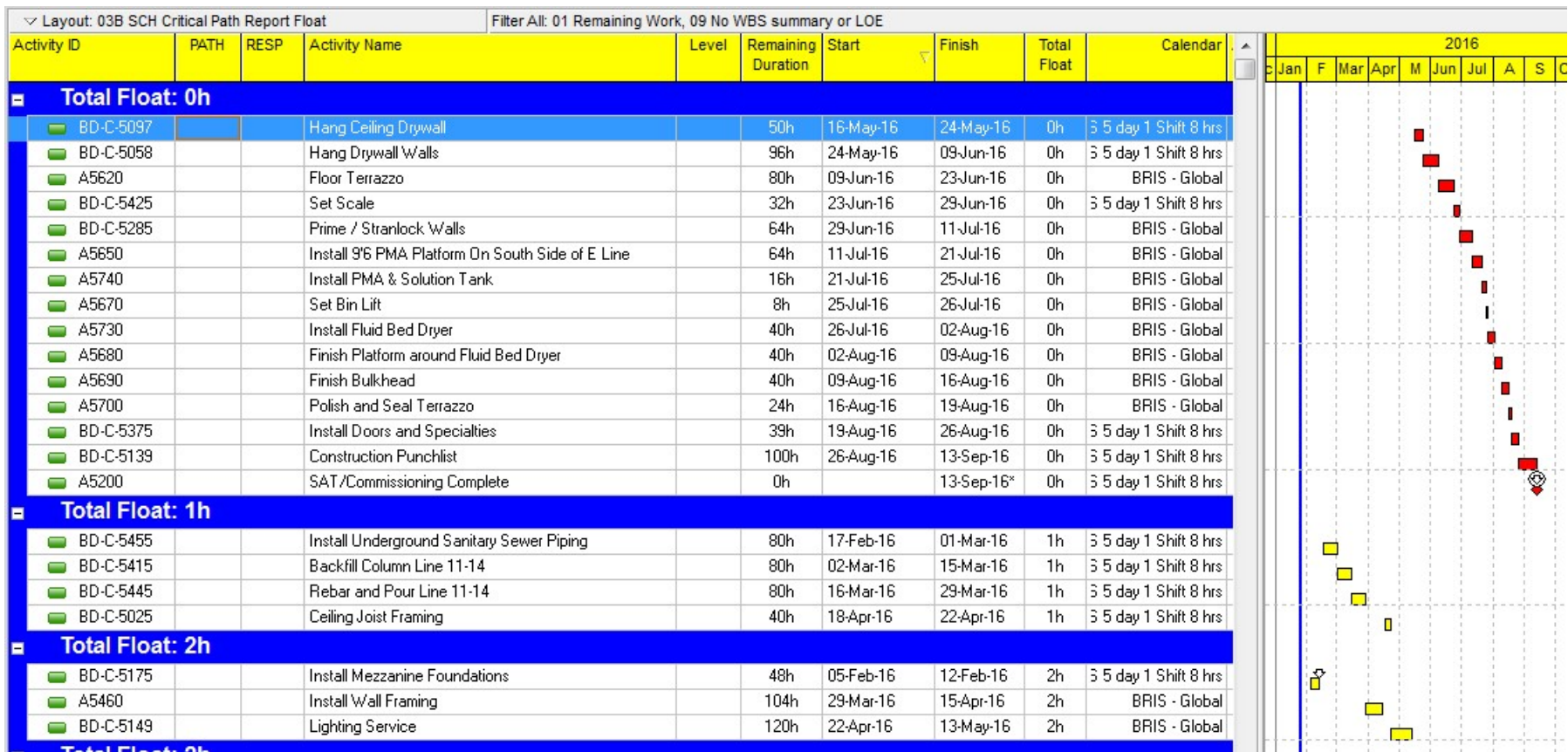
# Critical Path by Float

- Weakness: Multiple Paths Commingled



# Critical Path by Float

- Weakness: Multiple Calendars



# Driving Predecessor

Layout: 03B SCH Critical Path Report Float Filter All: 01 Remaining Work, 09 No WBS summary or LOE

Activity ID	PATH	RESP	Activity Name	Level	Remaining Duration	Start	Finish	Total Float	Calendar
<b>Total Float: 0h</b>									
BD-C-5097			Hang Ceiling Drywall		50h	16-May-16	24-May-16	0h	BRIS 5 day 1 Shift 8 hrs
BD-C-5058			Hang Drywall Walls		96h	24-May-16	09-Jun-16	0h	BRIS 5 day 1 Shift 8 hrs
A5620			Floor Terrazzo		80h	09-Jun-16	23-Jun-16	0h	BRIS - Global
BD-C-5425			Set Scale		32h	23-Jun-16	29-Jun-16	0h	BRIS 5 day 1 Shift 8 hrs
BD-C-5285			Prime / Stranlock Walls		64h	29-Jun-16	11-Jul-16	0h	BRIS - Global
A5650			Install 9'6 PMA Platform On South Side of E Line		64h	11-Jul-16	21-Jul-16	0h	BRIS - Global
A5740			Install PMA & Solution Tank		16h	21-Jul-16	25-Jul-16	0h	BRIS - Global
A5670			Set Bin Lift		8h	25-Jul-16	26-Jul-16	0h	BRIS - Global
A5730			Install Fluid Bed Dryer		40h	26-Jul-16	02-Aug-16	0h	BRIS - Global
A5680			Finish Platform around Fluid Bed Dryer		40h	02-Aug-16	09-Aug-16	0h	BRIS - Global
A5690			Finish Bulkhead		40h	09-Aug-16	16-Aug-16	0h	BRIS - Global
A5700			Polish and Seal Terrazzo		24h	16-Aug-16	19-Aug-16	0h	BRIS - Global

Calendar: 2016 Jan Feb Mar Apr May Jun Jul Aug Sep Oct

Activity: BD-C-5097 Hang Ceiling Drywall

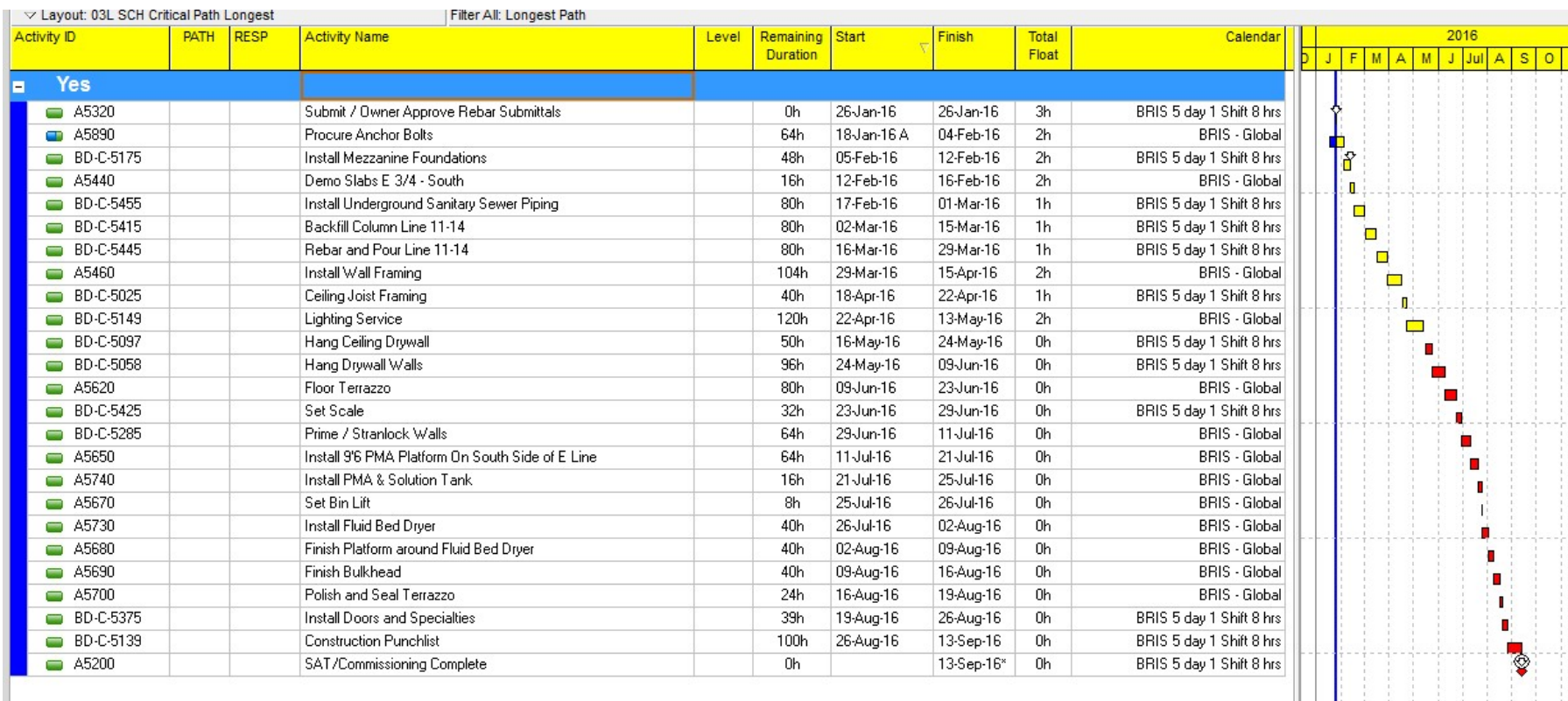
Predecessors

Activity ID	Activity Status	Driving	Activity Name	Relations	Lag	total Float	Start	Finish
A5660	Not Started	<input type="checkbox"/>	Install Fire Suppression Above Ceiling	FS	0	10	22-Apr-16	29-Apr-16
BD-C-5035	Not Started	<input type="checkbox"/>	Ceiling Duct Install	FS	0	5	22-Apr-16	06-May-16
BD-C-5149	Not Started	<input checked="" type="checkbox"/>	Lighting Service	FS	0	0	22-Apr-16	13-May-16

Assign Remove GoTo

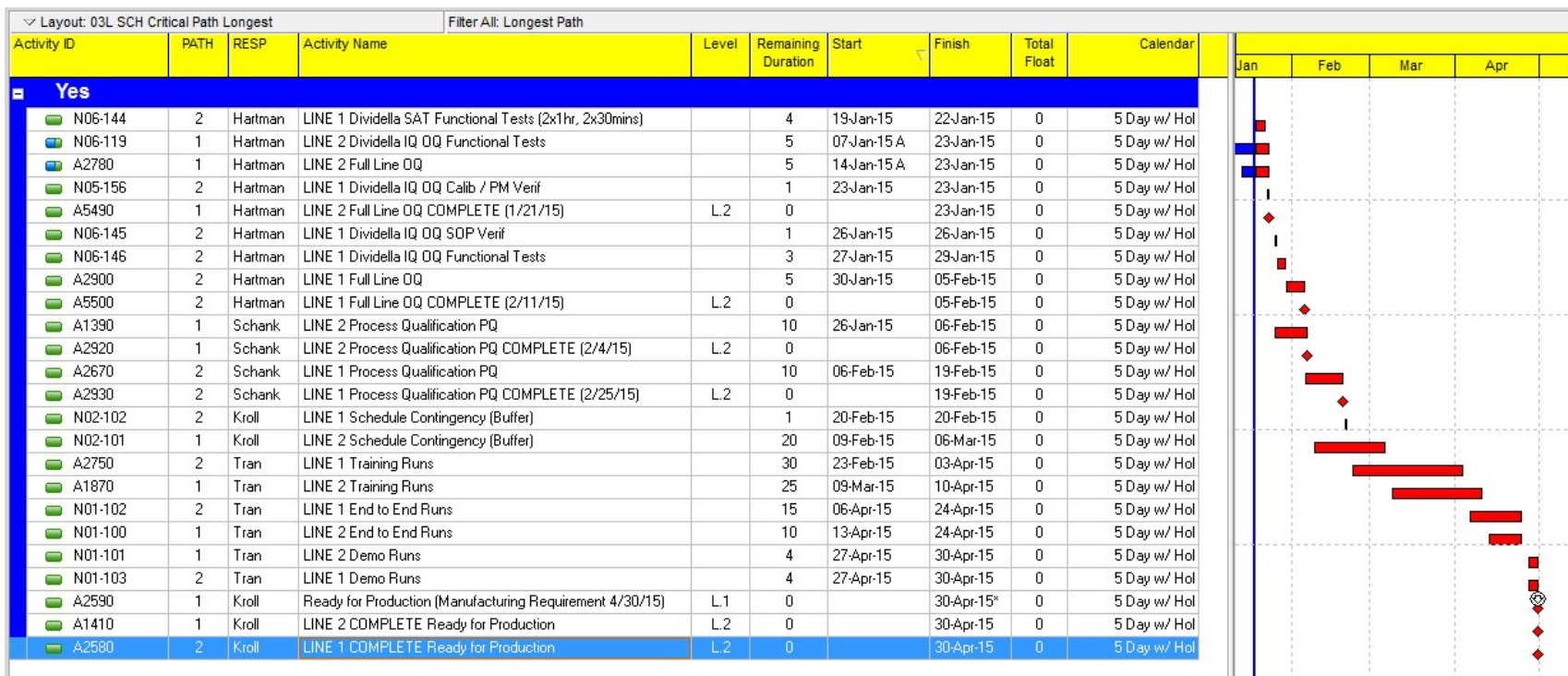
# Critical Path by Longest Path

- Filter on Longest Path ( P6 global filter )



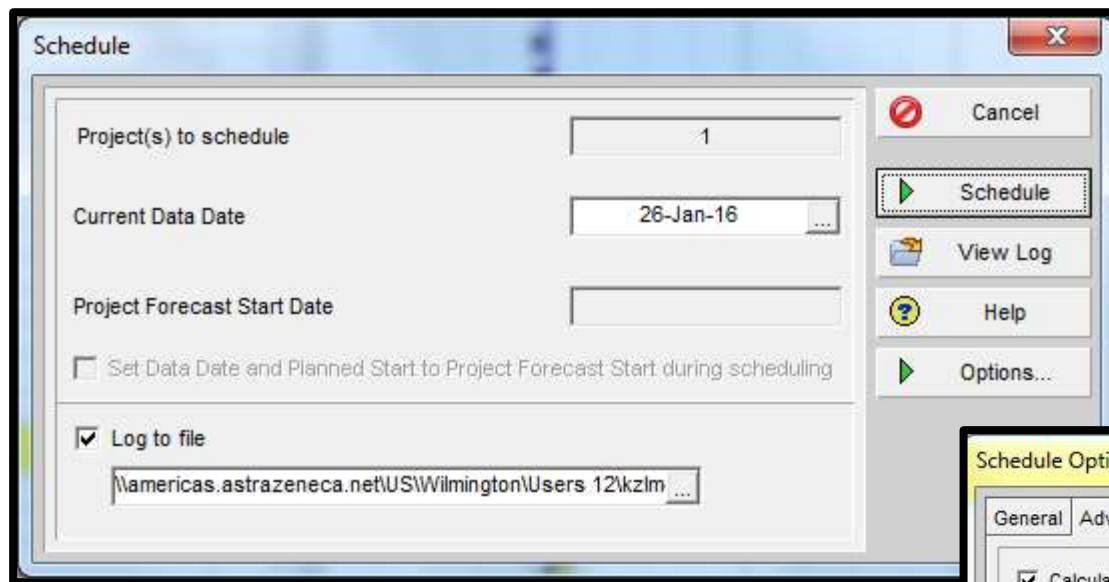
# Critical Path by Longest Path

- Does not always work

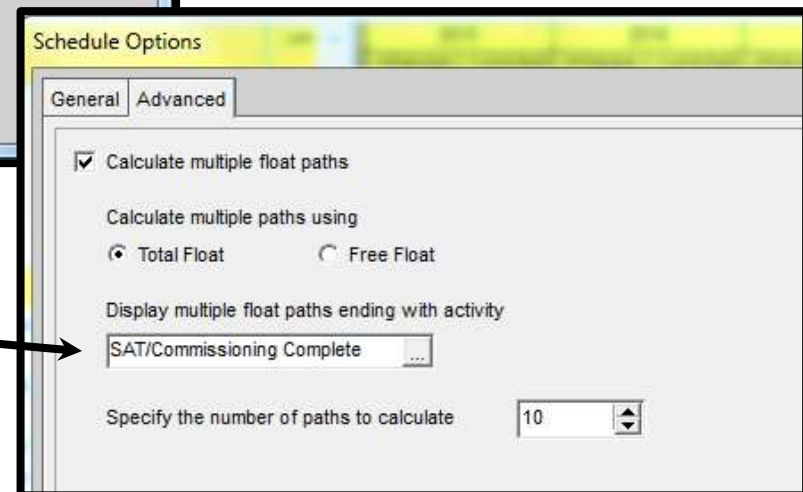


# P6 Multiple Path Tool

- From the Schedule window; Options, Advance

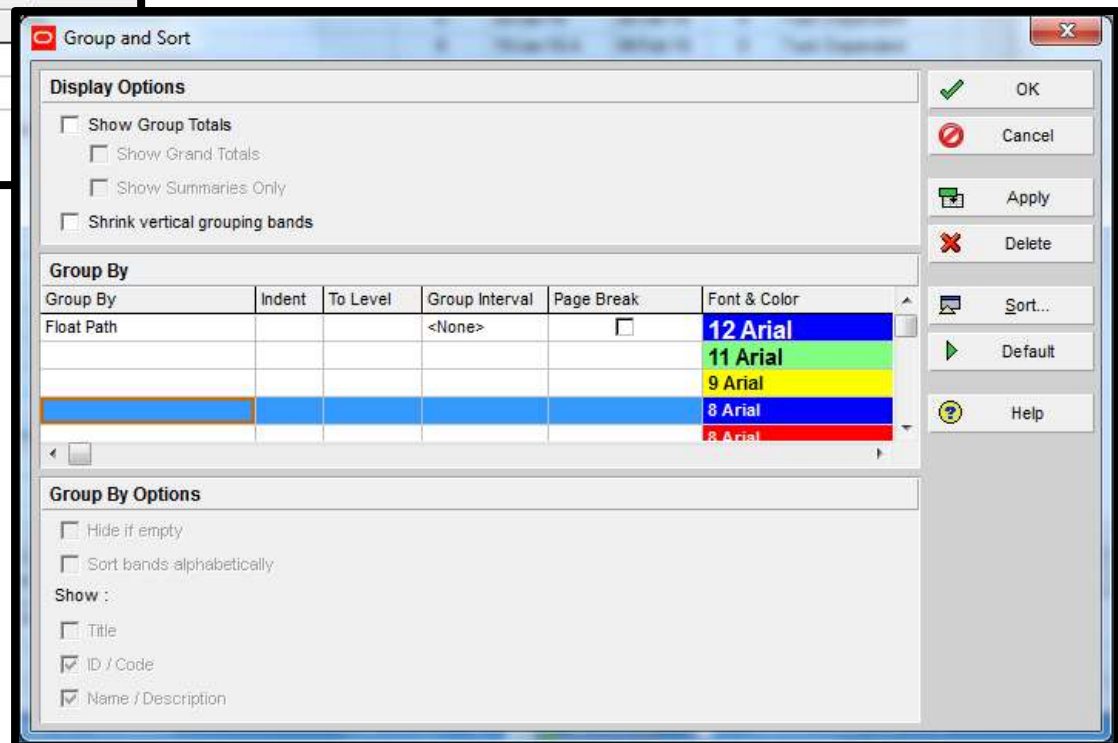
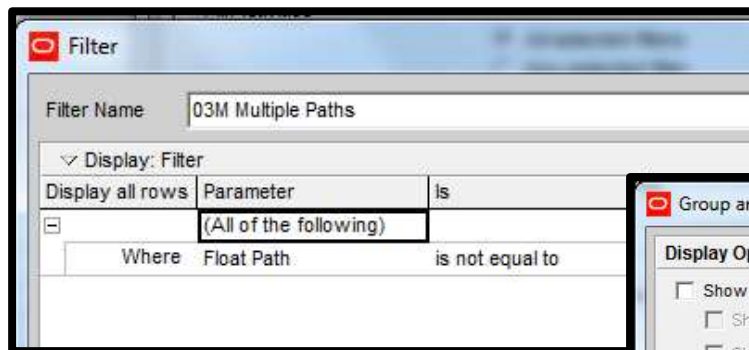


Choose Milestone you  
want to evaluate



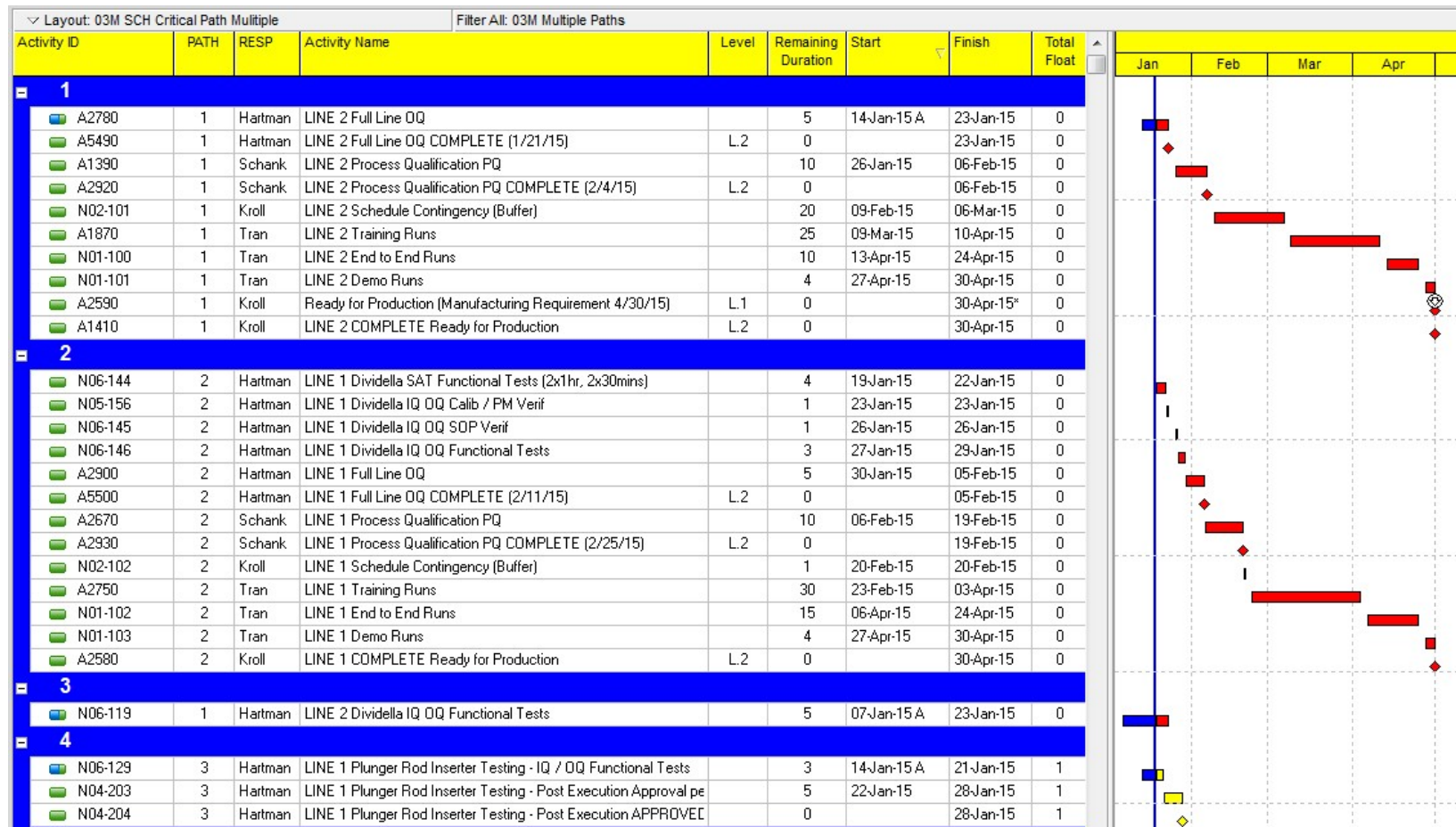
# P6 Multiple Path Tool

- Populates field called Float Path



# P6 Multiple Path Tool

- Display of Multiple Path(s)



# Reporting the Critical Path

---

- **No Method Seems to Capture it just right**
- **Propose a hybrid approach**
  - **Use any method; Float, Longest, Multiple**
  - **Tag Activity with PATH Activity code**
- **Report**
  - **Filter by PATH code**
  - **Group by PATH code**
  - **Sort by Finish, Start**

# Reporting the Critical Path

---

- **Tag Activity with PATH Activity Code**
  - **Create an Activity Code called PATH**
  - **Populate code with values 1 thru 20**
    - 1 = Critical Path
    - 2 = Path 2, etc.
  - **Create Layout with PATH as a column**
- **Follow the Path**
  - **Start with “Completion Milestone”, Tag Activity**
  - **Goto Driving Predecessor, Tag Activity**
  - **Use pop up box or right side floating box**

# Reporting Secondary Critical Paths

---

- **This is where you earn your keep!!!**
- **Focus on the Here and Now**
  - **Suppress activities in future**
  - **Look ahead filters**
- **Eliminate Parallel Path for Clarity**
  - **Remember it's a tool for decisions**
- **Sometime highlight for discussion**
  - **Problem Area's**

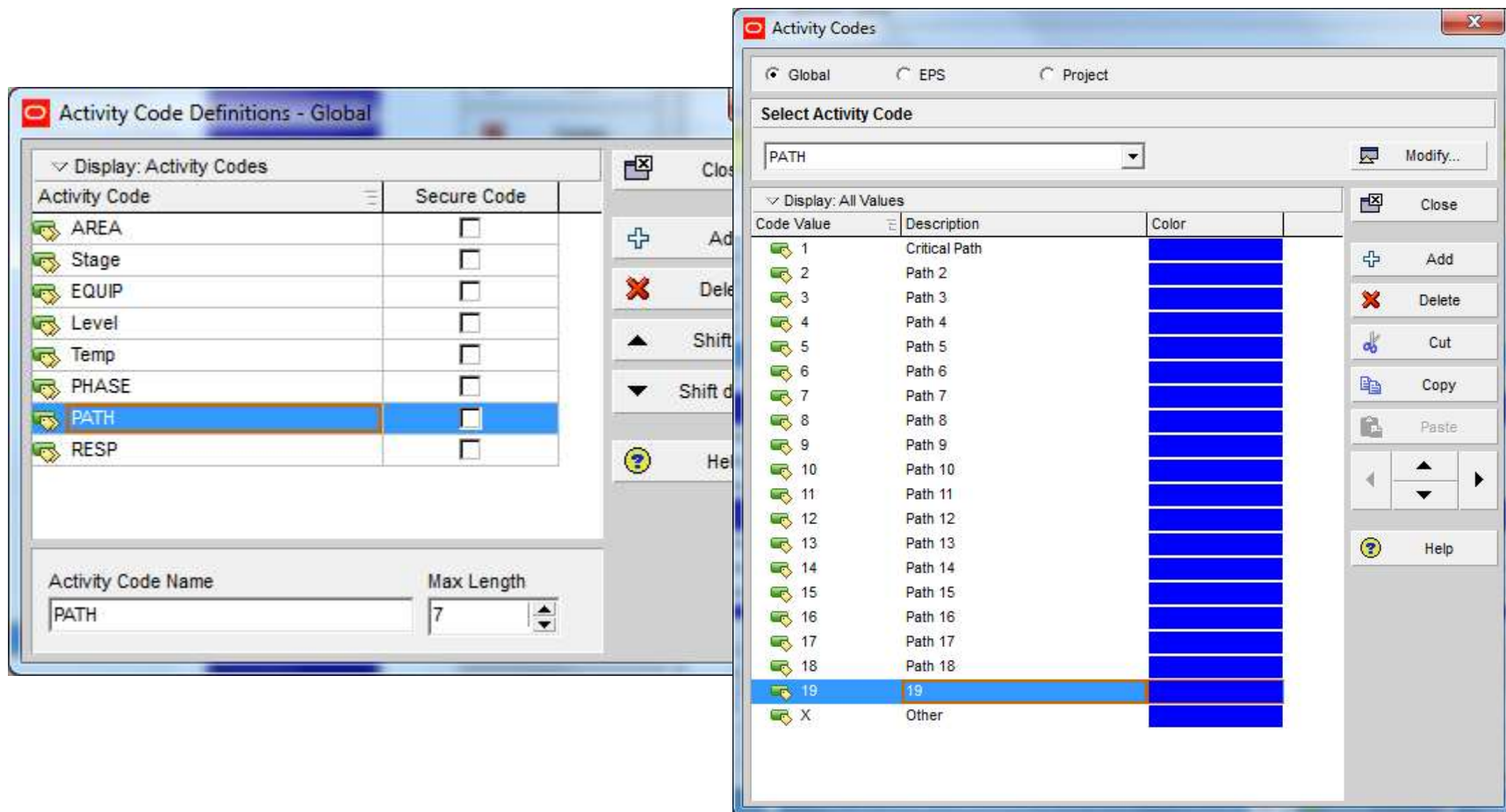
# Reporting Critical Path(s)

---

- **The skill Part**
  - **Tag and Goto Driving Predecessor Activity**
  - **Follow Branches**
- **Follow “Path” until**
  - **Reach a completed activity**
  - **Reach an in-progress activity**
  - **Reach a Start Constraint**
- **Review Report**
  - **Paths make senses?**
  - **Change Order ( change tag )**
  - **Remove ( delete tag )**

# Presentation with Primavera P6

- Define PATH activity code



# Presentation with Primavera P6

- Layout Grouped by Float with PATH Column

Layout: 03B SCH Critical Path Report Float

Filter All: 01 Remaining Work, 09 No WBS summary or LOE

Activity ID	PATH	RESP	Activity Name	Level	Remaining Duration	Start	Finish	Total Float	Calendar
Total Float: 0h									
N06-144		Hartmar	LINE 1 Dividella SAT Functional Tests (2x1hr, 2x30min		32h	19-Jan-15	22-Jan-15	0h	5 Day w/ Hol
N06-119		Hartmar	LINE 2 Dividella IQ OQ Functional Tests		40h	07-Jan-15 A	23-Jan-15	0h	5 Day w/ Hol
A2780		Hartmar	LINE 2 Full Line OQ		40h	14-Jan-15 A	23-Jan-15	0h	5 Day w/ Hol
N05-156		Hartmar	LINE 1 Dividella IQ OQ Calib / PM Verif		8h	23-Jan-15	23-Jan-15	0h	5 Day w/ Hol
A5490		Hartmar	LINE 2 Full Line OQ COMPLETE (1/21/15)	L.2	0h		23-Jan-15	0h	5 Day w/ Hol
N06-145		Hartmar	LINE 1 Dividella IQ OQ SOP Verif		8h	26-Jan-15	26-Jan-15	0h	5 Day w/ Hol
N06-146		Hartmar	LINE 1 Dividella IQ OQ Functional Tests		24h	27-Jan-15	29-Jan-15	0h	5 Day w/ Hol
A2900		Hartmar	LINE 1 Full Line OQ		40h	30-Jan-15	05-Feb-15	0h	5 Day w/ Hol
A5500		Hartmar	LINE 1 Full Line OQ COMPLETE (2/11/15)	L.2	0h		05-Feb-15	0h	5 Day w/ Hol
A1390		Schank	LINE 2 Process Qualification PQ		80h	26-Jan-15	06-Feb-15	0h	5 Day w/ Hol
A2920		Schank	LINE 2 Process Qualification PQ COMPLETE (2/4/15)	L.2	0h		06-Feb-15	0h	5 Day w/ Hol
A2670		Schank	LINE 1 Process Qualification PQ		80h	06-Feb-15	19-Feb-15	0h	5 Day w/ Hol
A2930		Schank	LINE 1 Process Qualification PQ COMPLETE (2/25/15)	L.2	0h		19-Feb-15	0h	5 Day w/ Hol
N02-102		Kroll	LINE 1 Schedule Contingency (Buffer)		8h	20-Feb-15	20-Feb-15	0h	5 Day w/ Hol
N02-101		Kroll	LINE 2 Schedule Contingency (Buffer)		160h	09-Feb-15	06-Mar-15	0h	5 Day w/ Hol
A2750		Tran	LINE 1 Training Runs		240h	23-Feb-15	03-Apr-15	0h	5 Day w/ Hol
A1870		Tran	LINE 2 Training Runs		200h	09-Mar-15	10-Apr-15	0h	5 Day w/ Hol

General

Status

Resources

Codes

Predecessors

Successors

Relationships

Notebook

Steps

Feedback

WPs & Docs

Expenses

Summary

Activity

A2590

Ready for Production (Manufacturing Requirement 4/30/15)

Predecessors

Activity ID	Activity Status	Driving	Activity Name
A1360	Not Started	<input type="checkbox"/>	MEZZ HVAC Rebalance all areas
A1410	Not Started	<input checked="" type="checkbox"/>	LINE 2 COMPLETE Ready for Production
A2580	Not Started	<input checked="" type="checkbox"/>	LINE 1 COMPLETE Ready for Production

Successors

Activity ID	Driving	Activity Name
-------------	---------	---------------

# Presentation with Primavera P6

- Tag Activity with PATH code

The screenshot displays the Primavera P6 'Activities' window. The 'Activities' tab is active, showing a list of activities with columns for Activity ID, PATH, RESP, and Activity Name. The activity A1410 is selected, and its details are shown in the bottom pane. The 'Select PATH' dialog box is open, showing a list of paths with 'Critical Path' selected. The dialog box also includes a search field and a 'Display: All Values' dropdown.

Activity ID	PATH	RESP	Activity Name
A2750		Tran	LINE 1 Training Runs
A1870		Tran	LINE 2 Training Runs
N01-102		Tran	LINE 1 End to End Runs
N01-100		Tran	LINE 2 End to End Runs
N01-101		Tran	LINE 2 Demo Runs
N01-103		Tran	LINE 1 Demo Runs
A2590		Kroll	Ready for Production (Manufa
A1410	1	Kroll	LINE 2 COMPLETE Ready fo
A2580		Kroll	LINE 1 COMPLETE Ready fo
<b>Total Float: 8h</b>			
N06-129		Hartmar	LINE 1 Plunger Rod Inserter T
N04-203		Hartmar	LINE 1 Plunger Rod Inserter T
N04-204		Hartmar	LINE 1 Plunger Rod Inserter T
<b>Total Float: 16h</b>			
N06-121		Hartmar	LINE 1 Denester Testing - IQ
N04-184		Hartmar	LINE 1 Denester Testing - Pos
N04-185		Hartmar	LINE 1 Denester Testing - Pos
<b>Total Float: 22h</b>			

Activity ID	Activity Status	Driving	Activity Name
A5710	Not Started	<input type="checkbox"/>	LINE 1/2 Preventive Maintenance PM APPROVED
N01-101	Not Started	<input checked="" type="checkbox"/>	LINE 2 Demo Runs
N03-223	Not Started	<input type="checkbox"/>	LINE 1/2 SAP APPROVED

Activity ID	Driving	Activity Name
A2590	<input checked="" type="checkbox"/>	Ready for Pr

# Presentation with Primavera P6

- Find and GoTo Driving Predecessor

Layout: 03B SCH Critical Path Report Float Filter All: 01 Remaining Work, 09 No WBS summary or LOE

Activity ID	PATH	RESP	Activity Name	Level	Remaining Duration	Start	Finish	Total Float
A2920		Schank	LINE 2 Process Qualification PQ COMPLETE (2/4/15)	L.2	0h		06-Feb-15	0h
A2670		Schank	LINE 1 Process Qualification PQ		80h	06-Feb-15	19-Feb-15	0h
A2930		Schank	LINE 1 Process Qualification PQ COMPLETE (2/25/15)	L.2	0h		19-Feb-15	0h
N02-102		Kroll	LINE 1 Schedule Contingency (Buffer)		8h	20-Feb-15	20-Feb-15	0h
N02-101		Kroll	LINE 2 Schedule Contingency (Buffer)		160h	09-Feb-15	06-Mar-15	0h
A2750		Tran	LINE 1 Training Runs		240h	23-Feb-15	03-Apr-15	0h
A1870		Tran	LINE 2 Training Runs		200h	09-Mar-15	10-Apr-15	0h
N01-102		Tran	LINE 1 End to End Runs		120h	06-Apr-15	24-Apr-15	0h
N01-100		Tran	LINE 2 End to End Runs		80h	13-Apr-15	24-Apr-15	0h
N01-101		Tran	LINE 2 Demo Runs		32h	27-Apr-15	30-Apr-15	0h
N01-103		Tran	LINE 1 Demo Runs		32h	27-Apr-15	30-Apr-15	0h
A2590		Kroll	Ready for Production (Manufacturing Requirement 4/3)	L.1	0h		30-Apr-15*	0h
A1410	1	Kroll	LINE 2 COMPLETE Ready for Production	L.2	0h		30-Apr-15	0h
A2580		Kroll	LINE 1 COMPLETE Ready for Production	L.2	0h		30-Apr-15	0h

Total Float: 8h

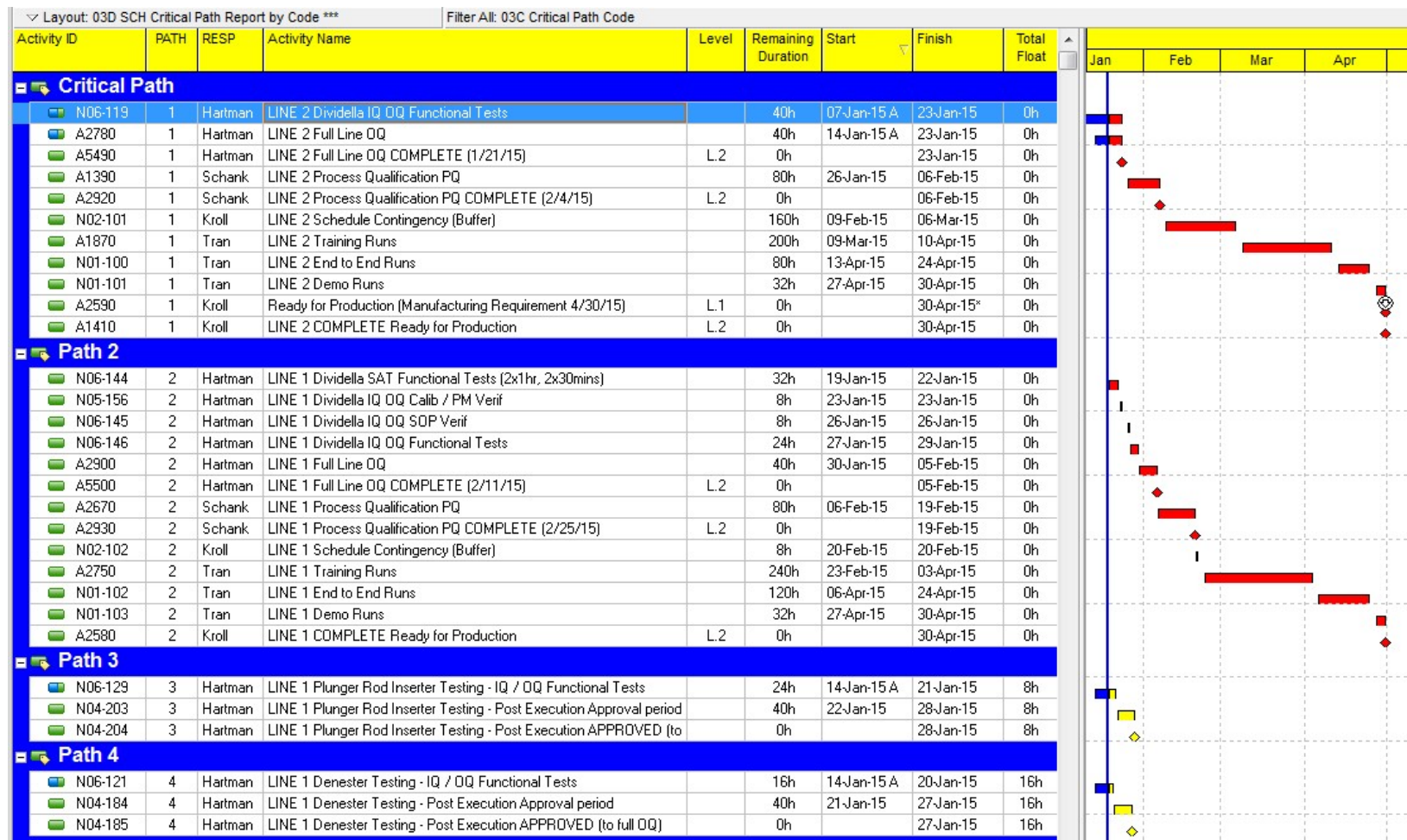
Activity: A2590 Ready for Production (Manufacturing Requirement 4/30/15)

Predecessors				Successors	
Activity ID	Activity Status	Driving	Activity Name	Activity ID	Driving
A1360	Not Started	<input type="checkbox"/>	MEZZ HVAC Rebalance all areas		
A1410	Not Started	<input checked="" type="checkbox"/>	LINE 2 COMPLETE Ready for Production		
A2580	Not Started	<input checked="" type="checkbox"/>	LINE 1 COMPLETE Ready for Production		
A5190	Not Started	<input type="checkbox"/>	REG FILING US PAS APPROVAL (2/11/15) verify		
A5250	Completed	<input type="checkbox"/>	REG FILING EU Type 1A APPROVAL		

Assign Remove GoTo Assign Remove

# Presentation with Primavera P6

- Open Layout Filtered and Grouped by PATH code



# Closing

---

- **Avoid Pit-Falls**
  - **Use Retain Logic**
  - **Clean up Open Ends**
  - **Clean up Out of Sequence**
  - **For parallel**
    - Do not use negative lags
    - Use SS and FF with positive lags
  - **Do not use FS with a lag**
    - Replace with activities
  - **Do not use On or Mandatory Constraints**

# Jonathan Japka, PMP

---

■ Custom Training ■ P6 Support ■ Scheduling

Jonathan\_Japka@Japka.us

- **Services**

- **Customized P6 Training**

- Create training based upon your project

- **Initial Setup / Configurations**

- **Health Checks**

- Review installations analyzing for improvements

- **Program Scheduling (Multi Projects)**

- **Project Scheduling**

# Jonathan Japka, PMP

---

■ Custom Training ■ P6 Support ■ Scheduling

For more information please contact:

**Jonathan R. Japka, PMP**

**Japka Management**

633 East Main St C7  
Moorestown NJ, 08057

**Voice: 856-380-0731 Cell: 856-296-8265**

Jonathan\_Japka@Japka.us

www.Japka.us