



Elecosoft[®]

Building on Technology[®]

Asta Powerproject: Unique Features

Presented by: Mary Williams
Projects Analytics, Inc.
(800)931-1582
mwilliams@projectsanalytics.com

 **Powerproject**[®]

Mary Williams – CEO Projects Analytics, Inc.

- Mary Williams, MBA, CEO & Founder of Projects Analytics
- Project Controls Expert with over 35 years experience
- Certified consultants for both Powerproject and Oracle Primavera
- Trained over 7,000 users in project controls and construction accounting concepts and solutions



About Projects Analytics, Inc.

- Providing solutions and implementation assistance to the Construction industry since 1985.
- Elecosoft Powerproject Partner
- Oracle Primavera Gold Partner
- Acumatica Construction Edition Cloud ERP



Powerproject Unique Features

- Task Pools
- “Undo”
- Multiple Tasks Per Line
- Multiple Progress Periods/Data Dates
- Path to/from Task
- Line of Balance Graphs



Task Pools

- Networks of tasks that you can use as templates for the creation of multiple, similar task networks within a project to speed up the setup a project and/or to add additional scope.
- Included in Project Template or created during Project setup.
- Capture repetitive scopes of work
- Also known as “**fragnets**” or “**templates**”.
- Task pools can include resources, costs, links, codes etc.



“Undo” – your best friend!

- Use to correct errors or perform what/if scenarios
- You can undo your previous actions step-by-step
- You can the actions you want to undo from a chronologically ordered list of actions.
- You can also redo actions that you have undone
- You can abandon all your changes since you last saved the project by clicking **Undo All Since Save**.
- You can even “undo” a schedule calculation – helpful during “what-if scenarios”.



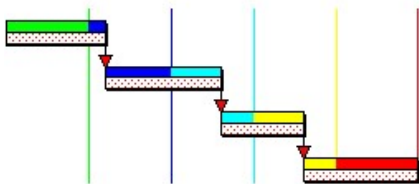
Multiple Tasks Per Line

- Create more than one task on the same bar to show repetitive or intermittent work on an activity.
- **Track tasks at desired level of detail but condense lots of information onto one bar for reporting purposes.**
- Name each bar and each task to describe the activity that they represent.
- Example: a bar named **“Concrete Submittal”** may have 4 tasks on it:
 - Receive from Subcontractor
 - GC Review and forward to A/E
 - A/E Review
 - A/E Forward back to GC
 - GC Provide Disposition Back to Sub



Multiple Progress Periods/Data Dates

- You can work with a single progress period, changing the report date each time that you report progress, or you can work with multiple progress periods, shading each progress period differently.
- Lock historic progress periods, or future progress periods that have been entered into a project but that should not yet be used
- Enables you to identify the reporting period (s) in which tasks were completed.



Path To/From Task

- Provides visibility to a task's complete chain of linked predecessors or successors to determine the impact of a delay.
- Display the complete chain of linked successor tasks that lead from a task to the latest task(s) in the chain(s).
- Useful to illustrate how many other tasks can be affected by changing just one task.
- Example: if a project contains a task that relates to the delivery of an item, you could use "Path from Task" mode to evaluate how many tasks could be affected directly by a delay to the delivery task.



Line of Balance Graphs - LOB

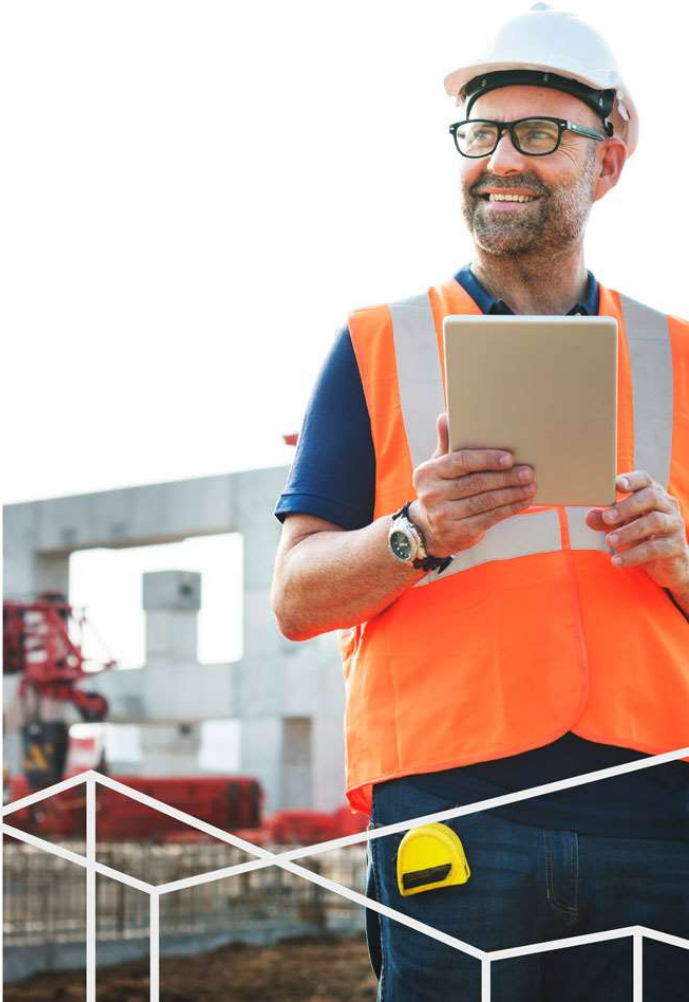
- LOB graphs are used where repetitive work is planned in different locations
- Also known as **“location based planning”**.
- Focus on progress of work crews as they move through a building/site.
- Maintain work crew’s productivity rate they move from one location to another and minimize starts & stops.
- Visualize flow of resources through work locations to plan work efficiently.
- **“Unit Networks”**: groups of tasks in which repeated work items are drawn with a series of linked steps to plan a single deliverable.
- Examples: build stages of house plot, finishing stages for each room in a hotel, roads & highways.



Elecosoft®

Questions?

Building on Technology®



Elecosoft®

Building on Technology®



Thank you!

Mary Williams

Projects Analytics, Inc.

mwilliams@projectsanalytics.com

800-931-1582

www.projectsanalytics.com