



**Welcome to
Construction CPM Conference
B Resort - Downtown Disney Springs
Disney World Florida
January 19 - 22 2020**





Built On Vision's custom software integrations provide answers for the first time, including:

- How is timing affecting cash flow?
- How do your costs change as the schedule shifts?
- How is the schedule affecting my forecast?
- What will I be paying for next month?
- How are various jobs affecting your company's cash flow across the portfolio?



Welcome

to the tenth

Construction



CPM

Conference

A word from our founder:

“Welcome to the only conference where the focus is on maximizing time efficiency in construction projects. Our goal is to provide:

- training in a variety of software products so that you may go home conversant in three or more,
- classes on advanced theory in both planning & scheduling, and extensions in risk, cost, EVM, CAD, BIM, litigation and other bleeding edge topics,
- a place to showcase project success stories with especial attention to lessons learned, and
- an entertaining backdrop for networking and socializing with your colleagues in our field of practice.

The success of our conference is yours. I would like to thank all of our attendees, speakers, exhibitors and sponsors for making this the industry event to support and attend. While we are not technically an organization, your year-round activities creating and contributing to our social media sites make you all members. I have been truly honored to be able to assist our community with your Construction CPM Conference.”

Fredric Plotnick

Table of Contents

Maps of Conference Floor Layout	6-7
List of Exhibitors and Sponsors	8-9
Program: Monday	11
Menu by Chef of B Resort	13
Program: Tuesday	15
Program: Wednesday	18
Abstracts: Monday 8:00 – 9:15 am	23
Abstracts: Monday 9:45 - 11 am	23
Abstracts: Monday 11:10 am - 12:25 pm	26
Abstracts: Monday 2:00 - 3:15 pm	29
Abstracts: Monday 3:35 - 4:50 pm	31
Abstracts: Tuesday 8:00 - 9:15 am	34
Abstracts: Tuesday 9:45 - 11 am	34
Abstracts: Tuesday 11:10 am - 12:25 pm	36
Abstracts: Tuesday 2:00 – 3:15 pm	38
Abstracts: Tuesday 3:35 - 4:50 pm	40
Abstracts: Wednesday 8:00 - 9:15 am	42
Abstracts: Wednesday 9:25 - 10:40 am	43
Abstracts: Wednesday 11:00 - 12:15 am	44
Abstracts: Wednesday 1:45 - 3:00 pm	45
Abstracts: Wednesday 3:20 - 4:35 pm	46

See you again

January 17-20

2021

at the San Luis Resort
Galveston Island Texas

Welcome Reception

Sponsored by

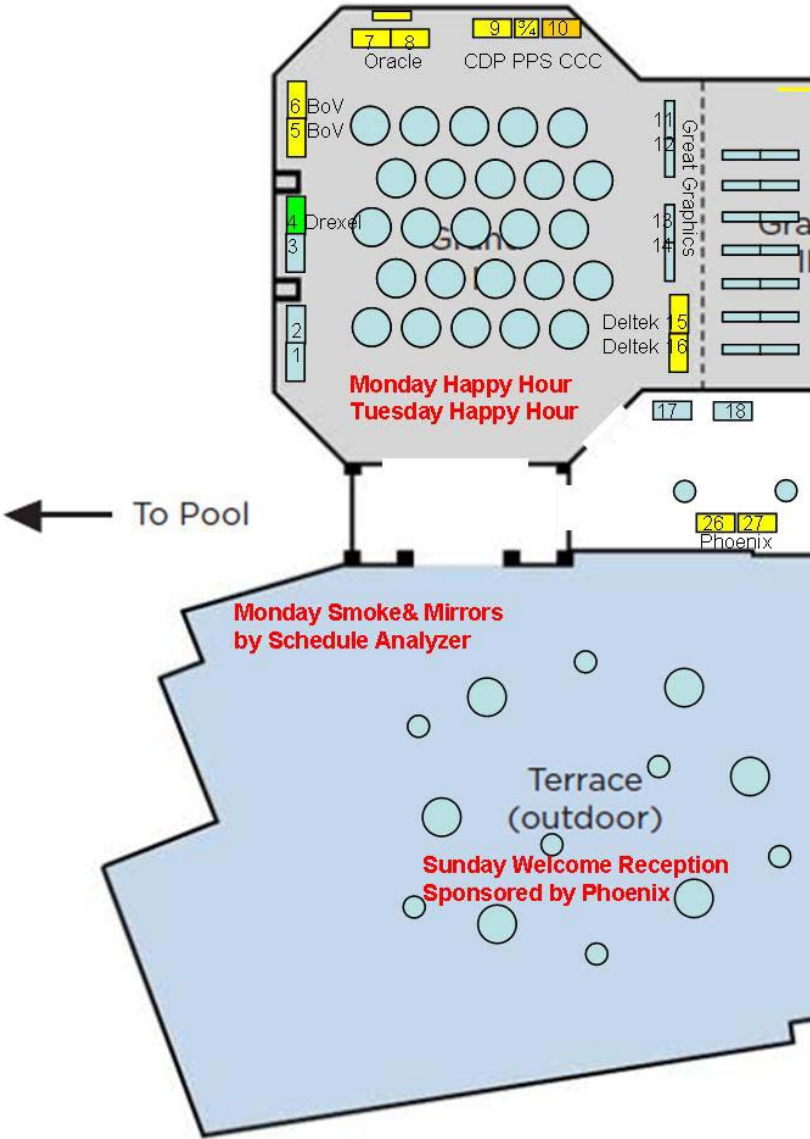


Sunday, January 19th

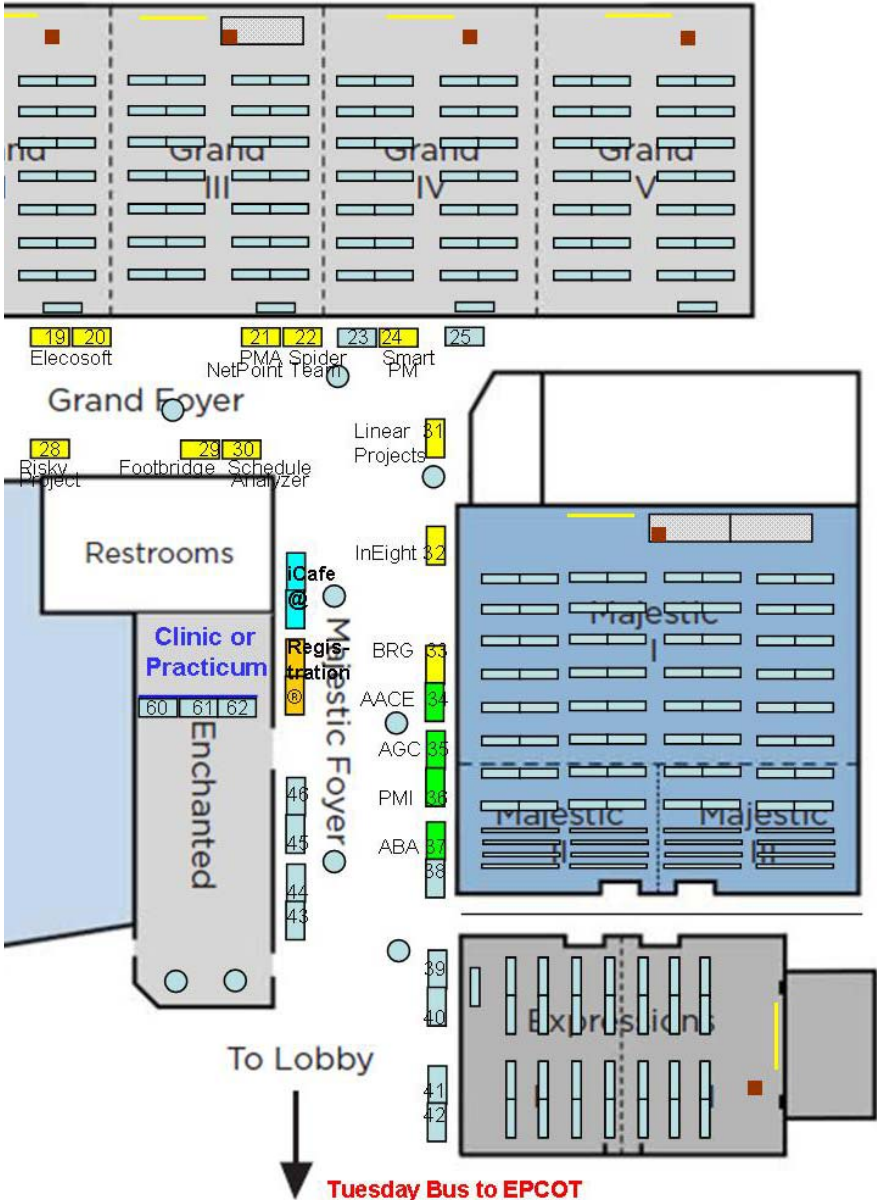
6:00 – 10:00 pm

B Terrace

Conference Floor Layout



Grand Ballroom



List of Exhibitors and Sponsors

Exhibit Tables	Ad on Page
01-02	Superbooth TBD n/a
03	TBD n/a
04	Drexel University n/a
05-06	Built on Vision p02
07-08.....	Oracle p10
09	CDP p31
09¾	Plotnick Professional Services p21
10	Construction CPM Conference Services p21
11-14	GREAT GRAPHIC DISPLAY p18
15-16	Deltek p34
17	TBD n/a
18	TBD n/a
19-20	Elecosoft Powerproject p17
21	PMA NetPoint p29
22	Spider Team p30
23-24	SmartPM p14
25	TBD n/a
26	Phoenix Project Manager p48
27	Phoenix Project Manager p48
28	Intaver Risky Project p30
29	Footbridge.... p35
30	Ron Winter Schedule Analyzer p38
31	Linear Project p17
32	InEight p22
33	BRG p39
34	AACE p21
35	AGC p43
36	PMI n/a
37	ABA Forum for Construction p21
38	Planning Planet n/a

**ADDITIONAL EXHIBITORS MAY BE ADDED
after we go to press**

**Check <http://www.constructioncpm.com/images/BLayout.jpg>
for latest UPDATE**

List of Exhibitors and Sponsors

Sunday Welcome Reception	Phoenix	p48
Monday breakfast	DelteK	p34
Monday coffee break	Phoenix	p48
Monday lunch	MPI	p11
Monday tea break	SmartPM	p14
Monday Happy Hour	Plotnick Professional Services	p32
Monday 8:30pm cigar Reception	Schedule Analyzer	p33
Tuesday breakfast	Phoenix	p48
Tuesday coffee break	TBD	n/a
Tuesday lunch	BRG	p39
Tuesday tea break	Village Green Apothecary	p16
Tuesday Happy Hour	Plotnick Professional Services	p41
Tuesday Dessert & Fireworks at EPCOT	PPS....	p41
Wednesday breakfast	TBD	n/a
Wednesday coffee break	TBD	n/a
Wednesday lunch	Phoenix	p48
Wednesday tea break	Plotnick Professional Services	p21
Wednesday farewell break	Plotnick Professional Services	p21

ADDITIONAL SPONSORS MAY BE ADDED after we go to press

Check <http://www.constructioncpm.com/At-A-Glance/>
for latest UPDATE



**Get One-on-One Assistance
for your software questions
at the Oracle Booth at Table 7-8 in Food Court**



All your scheduling needs in one place...

Visit Oracle at **booths #7 and #8**

ORACLE
Construction
and Engineering

SUNDAY PROGRAM

3 – 9 pm	Registration
6 – 10 pm	Phoenix Welcome Reception – B Terrace

MONDAY PROGRAM

6:30 – 8 am	Hot Breakfast – sponsored by Deltek
8 – 9:15 am	Opening Remarks and Keynote Presentation
9:15 – 9:45 am	Coffee Break sponsored by Phoenix



9:45 – 11 am	Breakout Sessions
Majestic	What's New in the Oracle CEGBU
Grand 2	Automate with Acumen Touchstone
Grand 3	Phoenix Project Manager
Grand 4	Avoid Out-of-Sequence Progress with MSP
Grand 5	BIM BAM BUM
Expressions	Why I Should / Shouldn't Do That
11:10 am – 12:25 pm	Breakout Sessions
Majestic	Schedule Development Using P6
Grand 2	Deltek Schedule Acceleration Techniques
Grand 3	Introduction to Elecosoft Powerproject
Grand 4	Really Understanding MSP
Grand 5	Schedule Optimization with Spider Software
Expressions	Using Schedules for Loss of Productivity Claims
12:25 – 2 pm	Lunch served in Grand 1 Ballroom sponsored by Micro Planner X-PERT

MONDAY PROGRAM CONT'D

2:00 -3:15 pm

Breakout Sessions

Majestic

Schedule Updating Using P6

Grand 2

Deltek Open Plan

Grand 3

Introduction to Phase Manager

Grand 4

Gaining Competitive Advantage AI Forecasting

Grand 5

Managing Project Challenges w/ Linear Planning

Expressions

GAO Schedule Assessment Guide

3:15 – 3:35 pm Afternoon Break sponsored by SmartPM

SmartPM

3:35 – 4:50 pm

Breakout Sessions

Majestic

What Arbitrators look for in Scheduling Experts

Grand 2

TBD

Grand 3

Next Level Schedule Analytics and Automation

Grand 4

Make Sense of Advanced Work Packaging

Grand 5

Wave Transfer Planning w/ NetRisk

Expressions

CLEAN SLATE Building a Scheduling Program

4:50 – 6:30 pm

Networking Reception sponsored by Plotnick

7:00 – 9:00 pm

Dine on own or with Five New Friends

9:00 – 11:00 pm

**Smoke & Mirror Reception at B Terrace
and a cigar courtesy of Ron Winter**



Menu by Chef of B Resort

WELCOME RECEPTION by Phoenix 6:00-10:00PM Sunday January 19

Butler Passed Oriental Spring Rolls with Thai Chili Sauce, Spanakopita: spinach, feta in phyllo; Assortment of three fresh ceviches: salmon, shrimp and scallop; Charcuterie: Salami, mortadella, soppressata, prosciutto and bresaola accompanied by marinated olives, roasted vegetables and fresh baguette; Gourmet Sliders: Crab Cake with Chipotle Mayonnaise on Petite Brioche Cheddar Roll, Beef Brisket with Sweet Onion and House Barbeque on Petite Brioche Onion Poppy Roll, Polynesian Luau Pulled Pork on Coconut Roll; BBQ CARVING STATION with Smoked Bone-In Prime Rib of Beef with Kansas City Sauce and Texas Mustard Sauce on Brioche Silver Dollar Rolls – and two drink tickets

Plated Breakfast by Deltek 6.30-8:00AM Monday January 20

Seasonal Sliced Fruits and Vine-Ripened Berries; Freshly Baked Muffins and Sweet Pastries; Artisan Preserves, Honey and House Made Butter; Yogurt Parfaits with Fresh Berries and House Made Granola; Imported Cheese and Charcuterie Plate; Croissants with Cured Ham, Signature Sausages and Bacon; Freshly Brewed Joffrey's Regular & Decaf Coffee, a Selection of Harney & Sons Teas, Freshly Squeezed Florida Orange and other Juices.

Continuous coffee by Phoenix with added assorted pastries to 11:15 AM

Plated Lunch by MicroPlanner X-Pert 12.25 PM Monday January 20

Mixed Petite Greens with Roasted Tomato, Cucumbers, Shredded Carrots and Brioche Croutons with Choice of Dressing; Warm Rolls and B Signature Butter; Pasta with Alfredo, Basil Pesto or Roasted Red Pepper Pesto Sauce; Florida Key Lime Pie

PM Break by SmartPM Monday January 20

Ice Tea, Lemonade, Assorted Soft Drinks, Red Bull, Variety of Chips and Snack Bars

HAPPY HOUR RECEPTION 4:50-6:30PM Monday January 21

Butler Passed Eggplant Bruschetta with olive oil and tomato pomodoro, Mac and Cheese Fritters; Platter of international and domestic cheeses served with fresh vine-ripened berries, assorted crackers and crostini – and two drink tickets

Plated Breakfast by Phoenix 6.30-8:00 AM Tuesday January 21

Custom Breakfast Buffet of Scrambled Eggs and Bacon; Freshly Baked Muffins and Croissants with Fresh Fruit Preserves and Signature Butters; Freshly Brewed Joffrey's Regular and Decaf Coffee, Harney & Sons Teas, Freshly Squeezed Florida and other Juices.

Continuous coffee with added assorted pastries to 11:15 AM

Plated Lunch by BRG 12.25 PM Tuesday January 21

Warm Rolls and B Signature Butter; Grilled Chicken Caesar Salad- Romaine, Grilled Herb Marinated Chicken, Breast, Shaved Parmesean, Blistered Cherry Tomatoes, Garlic, and Anchovy Dressing; Flourless Chocolate Cake with Espresso Sauce

Break PM Tuesday January 21

Ice Tea, Lemonade, Assorted Soft Drinks, Red Bull, Variety of Chips and Snack Bars

HAPPY HOUR RECEPTION 4:50-6:30PM Tuesday January 21

Assortment of salmon, shrimp and scallop ceviches; Trio of Artisan Flatbreads Station (Stanislaus County Tomato-Mozzarella-Basil, Italian Sausage with crisp fried garlic and roasted red & green peppers, and Thick cut pepperoni with crushed tomatoes and provolone cheese; Gourmet Sliders including Crab Cake with Chipotle Mayonnaise on Petite Brioche Cheddar Roll, Beef Brisket with Sweet Onion and House Barbeque on Petite Brioche Onion Poppy Roll, and Polynesian Luau Pulled Pork on Coconut Roll – and two drink tickets

Menu by Chef of B Resort

Plated Breakfast 6.30-8:00 AM Wednesday January 22

Custom Breakfast Buffet of Scrambled Eggs and Sausage Links; Freshly Baked Muffins and Croissants with Fresh Fruit Preserves and Signature Butters; Freshly Squeezed Florida Orange Juice, Chilled Apple and Cranberry Juices.

Continuous coffee with added assorted pastries to 11:15 AM

Plated Lunch by Phoenix 12.25 PM Wednesday January 22

BOX LUNCH choice of: Herb Roasted Turkey, Muenster, Lettuce, Tomato on Seven Grain Whole Wheat Roll; Black Forest Shaved Ham, Gruyere, Lettuce, Tomato on Sour Dough Kaiser Bun; Roast Beef with Brie, Lettuce, Tomato on a Croissant; or Greek Salad Spinach Wrap; and each box lunch to come with Red Potato Salad, Whole Banana, Sun Chips a Chocolate Chip Cookie and a Soft Drink or Bottled Water

Enjoy in our Food Court with our Exhibitors, or Pool Side

Break PM Wednesday January 22

Ice Tea, Lemonade, Assorted Soft Drinks, Red Bull, Variety of Chips and Snack Bars

Farewell Snack 4:35 PM January 22

Ice Cream Novelty Bar and Frozen Fruit Bars

Attendees with Special Needs please inform at Registration Desk

SmartPM

Analyze Schedule Quality & Integrity



Ensure Schedule Quality is aligned with industry standards and identify changes made to future schedules that are unrealistic and misleading

Diagnose Project Performance



Get real-time, data driven analysis of progress and performance of contractors

Forecast Milestone Completion Dates



Extrapolate historical performance data onto future activities to predict completion dates of critical milestones

Forensic Delay Analysis



Identify historical critical path delays that drove project cost & schedule instead of hiring consultants and lawyers

CPM Scheduling Innovation Meets Automation



(404) 329-3000

www.smartpmtech.com

info@smartpmtech.com

TUESDAY PROGRAM

6:30 – 8 am

Hot Breakfast – sponsored by Phoenix



8 – 9:15 am

Opening Remarks and Keynote Presentations

9:15 – 9:45 am

Coffee Break

9:45 – 11 am

Breakout Sessions

Majestic

I am hiring an expert – Why you?

Grand 2

Benchmarking As-Built Lags

Grand 3

Differentiate Yourself and Charge More

Grand 4

Connecting Cost, Schedule and BIM with Aconex

Grand 5

Habits of Highly Effective Scheduling

Expressions

GAO Agile Assessment Guide

11:10 am – 12:25 pm

Breakout Sessions

Majestic

Suspend Work Remain on Standby

Grand 2

P6 Hidden Features

Grand 3

4 hour in 40 minutes

Grand 4

Controls and Metrics for Unit Price Contracts

Grand 5

Optimizing the Schedule Workflow

Expressions

Connecting CPM and Lean Scheduling

12:25 – 2 pm

Lunch sponsored by BRG



Berkeley Research Group

TUESDAY PROGRAM CONT'D

2:00 – 3:15 pm

Breakout Sessions

Majestic	Latest on AACE 29RP-03
Grand 2	Steve's Scheduling-Innovation Workshop
Grand 3	Project Risk Analysis Secrets and Tricks
Grand 4	Cost and Schedule Integration Criterion
Grand 5	What's New in Scheduling by Oracle
Expressions	Why a Linear Project needs a Linear Schedule

3:15 – 3:35 pm **Afternoon Break**



VillageGreen[®]
Apothecary

<http://www.myvillagegreen.com/>

3:35 – 4:50 pm

Breakout Sessions

Majestic	Hot Topics in Construction Law
Grand 2	Construction Phasing for a Bid, Plan or Claim
Grand 3	Construction Project Planning
Grand 4	Dissecting the New Cloud Microsoft Project
Grand 5	Statewide Enterprise Scheduling
Expressions	AACEi Planning & Scheduling Subcommittee

4:50 – 6:30 pm **Networking Reception sponsored by Plotnick**

6:15 – 6:45 pm **Board Pegasus or Disney Transport to EPCOT**

8:00 – 9:30 pm **EPCOT Dessert Party**

9:00 – 9:15 pm **EPCOT Fireworks**

9:00 – 11:00 pm **Disney Extra Hours at EPCOT**

9:00 – 11:30 pm **Disney Transport to B Resort or Disney Springs**

9:00 – 2:00 am **After Hour Party Ragland Road, Disney Springs**



Powerproject: A better scheduling tool

Come to Booth 20 to see why construction schedulers are switching to Powerproject and to enter our prize draw:

Bring along your contact details to win a free Powerproject license! The giveaway will be announced at our booth on Tuesday 22nd January at 11 AM.

Name Company

Job title Phone

Email



USER FRIENDLY LINEAR SCHEDULES



ROADS



TUNNELS



LINEAR
NETWORKS



VERTICAL
BUILDINGS



RAILWAYS



DESIGNED TO WORK WITH YOUR EXISTING SCHEDULING TOOLS



Safran Risk™



Powerproject™



WEDNESDAY PROGRAM

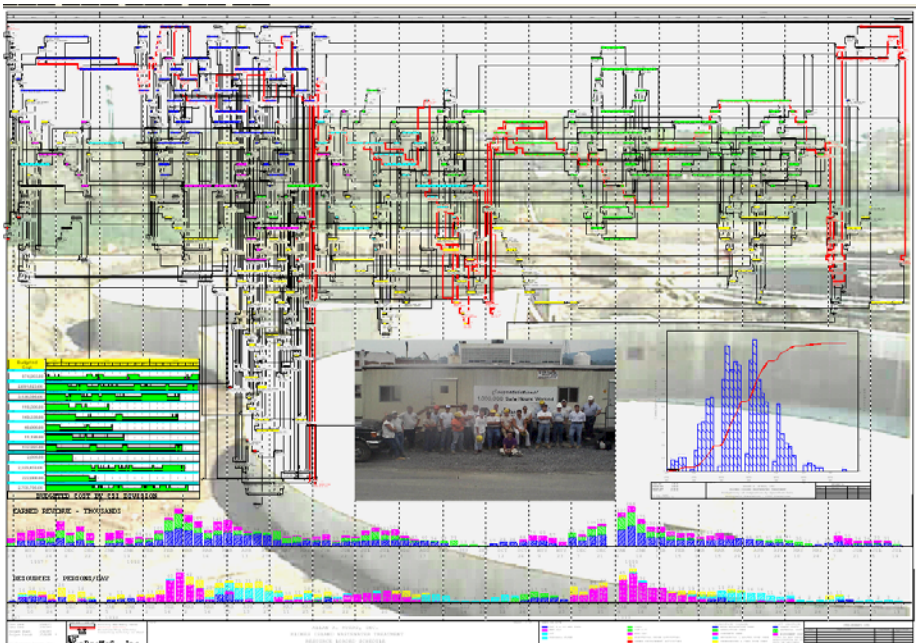
6:30 – 8 am **Hot Breakfast**

8 – 10:40 am **Mock Trial – Judge Marshall Presiding**
Our courtroom is in Majestic Ballroom

8:00 – 9:15 am **Breakout Sessions**
Grand 2 **Admin Tips & Tricks for Oracle Products**
Grand 3 **2020 Cloud Priorities by LoadSpring**
Grand 4 **TBD** **Grand 5** **TBD**

9:25 – 10:40 am **Breakout Sessions**
Majestic **Mock Trial Continued**
Grand 2 **Oracle Program and Portfolio Management**
Grand 3 **Challenges of Resource Constrained Scheduling**
Grand 4 **TBD** **Grand 5** **TBD**

10:40 – 11:00 am **Coffee Break**



Great Graphic – Primavera User Conference 1998
Plotnick Professional Services - EnProMaC
Great Graphics Contest – 1st Prize 2021 Registration Free

The oldest P6 add-on company has taught over 1,500 users how to analyze P6 schedules. Why not join them?

20 years and counting, Schedule Analyzer Software continues to give new insights into the complex analysis of construction CPM schedules. Complete your analysis in 4 hours or less. Find out what the other party is going to complain about before they get the chance.

Best of all, do all of this at a fraction of what the others charge. Perpetual, concurrent licenses with free customer service at a third of the price. Look for our table for more important information.



WEDNESDAY PROGRAM CONT'D

11:00 – 12:15 pm

Breakout Sessions

Majestic	The Nuts and Bolts of Collapsed As Built
Grand 2	Real Time Coordination USA to Australia
Grand 3	Mastering Out-of-Sequence Progress
Grand 4	Oracle Town Hall - Next Generation Scheduling
Grand 5	Approaches to Planned Final Completion Date

12:15 – 1:45 pm

**Lunch – sponsored by Phoenix
Announce Winner of Great Graphics**



1:45 – 3:00 pm

Breakout Sessions

Majestic	Ethics and the Expert
Grand 2	Elecosoft Roadmap/TownHall
Grand 3	Schedule Simulation with LEGOs
Grand 4	Delay Analysis Valuable Tool or Black Magic?
Grand 5	Modeling how Project Managers Typically React

3:00 – 3:20

Afternoon Break

3:20 – 4:35 pm

Breakout Sessions

Majestic	Great Debate - ProspectiveTime Impact Analyses
Grand 2	TBD
Grand 3	Schedule Simulation with LEGOs
Grand 4	Effective Document Management by Oracle
Grand 5	TBD

4:25 – 4:50pm

Farewell with a sweet treat from Exhibitors

**Magic Kingdom is open until 10pm for hotel guests
Consider an After 6pm ticket**

OTHER EVENTS OF NOTE



59th Annual
**WESTERN WINTER
WORKSHOP**

February 27 - March 1, 2020
Renaissance Indian Wells Resort & Spa



*Please
Join Us*

**AACE
REGION 2**

2020 Northeast Symposium
March 26-27, 2020
Tysons Corner Marriott | Tysons, Virginia

For more information, please visit www.northeastsymposium.com.

contact information
Niyi Ladipo nladipo@mbpce.com | Craig Steigerwalt csteigerwalt@exponent.com

APR

23-25

2020 Forum on Construction Law Annual Meeting

Sheraton Grand Seattle, 7 AM PDT

2020 Forum on Construction Law Annual Meeting



A NEW WAY TO BUILD

Imagine if hundreds of construction professionals with decades of experience got together to build the perfect project management solution.

That better way to build is available to you now.

InEight.com/CPM



Abstracts MON 8:00 to 9:15

Opening Remarks

from our host Fred Plotnick and video address of our first leader James O'Brien

Keynote by Chris Caddell, CCP FAACE, President-Elect of AACE on Importance of Professional Level Certifications and Licensure

Chris is pleased that 40% of attendees at Construction CPM Conference are members of the Association for Advancement of Cost Engineers International. And he hopes to convince our other 60% to join. While the primary goals of CCC are to educate and train, AACE's primary goal is to bring forth new knowledge and subject to peer review and debate. As Senior Vice-President of Turner & Townsend, Chris can share why our industry and the industries we serve need both AACE and CCC.



MON 9:45 to 11:00

MON 11 in Majestic Ballroom

What's New in the Oracle CEGBU

A lot can happen in a year. Oracle has been busy improving all of the existing products, identifying how to incorporate transformative capability such as virtual reality and artificial intelligence into the product suite, as well as facilitating our partners' and customers' digital transformation. Come to this session to get highlights of the changes in P6, Primavera Cloud, Unifier, Aconex, Textura, and Analytics. Also, during this session we'll present how Oracle is facilitating the industry's digital transformation through phase 1 and now phase 2 of the Oracle Industries Innovation Lab. Presented by Frank Malangone, Oracle

MON 12 in Grand 2

Deltek Automate Your Schedule Review Process with Acumen Touchstone

How much time do you spend manually evaluating schedules for quality and achievability? Not only is this process time consuming, and often unreliable, lessons learned frequently die with the project. Join us to discover how to streamline the schedule review process with Deltek Acumen's newest module, Touchstone! We will cover various schedule quality checks that can be done using Acumen Fuse, as well as how to use the metric criteria that you set up in the tool to automate schedule checks with Acumen Touchstone. Combining these two Acumen modules gives you the ability to perform in depth schedule evaluations with Fuse, and consistently enforce your project schedule criteria by automating the collection, review, approval and storage of schedules in Touchstone. Presented by Jarod Maloney, Deltek

MON 13 in Grand 3

Introduction to Phoenix Project Manager

Phoenix Project Manager is a project-focused CPM scheduling tool for the construction, energy and architecture/engineering markets.

In this session, Jay Poulsen, President of Phoenix Project Management, will discuss the use of Phoenix Project Manager to create and maintain project schedules, and how to migrate your current scheduling efforts from Primavera or other enterprise platforms to Phoenix. Mr. Poulsen will also discuss the future development direction of Phoenix Project Manager.

MON 14 in Grand 4

Avoid Out-of-Sequence Progress in Microsoft Project

Recording Actual dates that violate existing schedule logic can cause conflicts in Microsoft Project's internal schedule calculations. The resulting Total Slack values and Critical task flags can be incorrect and misleading. These issues are aggravated by recent (e.g. MSP 2016) versions of the software, and users are advised to minimize out-of-sequence progress. Presented by Thomas Boyle, PE, PMP, PSP

MON 15 in Grand 5

BIM BAM BUM

Join Fred Plotnick in a discussion on "What is the cause of resistance to BIM in the USA?" and issues of joining BIM and Scheduling.

MON 16 in Expressions Ballroom

Why I Should / Shouldn't Do That

Last year's discussion was so lively we decided to do it again! This interactive discussion will focus on the advantages and disadvantages of using various techniques in current construction scheduling practice based on the practical realities of most construction projects. Using "real life" video examples and hypothetical situations, several topics will be explored: •How should the weather calendar be developed and presented in the schedule? •Whether the schedule should be cost loaded, and, if so, how? •Under what circumstances should the P6 progress override feature be used? •Whether and how should redundant logic be used? •Methods of resource loading the schedule. •When to balance crew loads vs. using soft logic? •When and how to use constraints? •Whether there is any circumstance to use a negative lag? •Whether to use finish-to-start relationships with lags? Presented by Charles V. Choyce, Jr., MRICS, PSP, PMP, CM-LEAN, CFCC, Managing Director of BRG and Robert Lamb, PSP, LEED AP BD+C, CM-LEAN, Associate Director of BRG, Benjamin Crosby, Director, Virtual Design and Construction, W.G. Yates Construction Co., and Drew Polahar, Scheduling Manager, Blaine Construction Co.



Continuing Education Credits



The Florida Bar

651 East Jefferson Street
Tallahassee, FL 32399-2300

Joshua E. Doyle
Executive Director

850/561-5600
www.FLORIDABAR.org

Certificate of Accreditation for Continuing Legal Education

Reference Number:	1909617N
Title:	Construction CPM Conference
Level:	Intermediate
Approval Period:	01/20/2020 - 07/31/2021

CLE Credits

General	22.5
Ethics	4.5
Technology	4.0

Certification Credits

Construction Law	22.5
------------------	------

Application Made to Louisiana Bar for 18 Credit Hours
Professional Engineers may report 22.5 PDH in Model States
50 minute contact hours per NCEES
Also approved by AACE and PMI

DID YOU KNOW?

You may view sessions you missed

You may review sessions you liked

**You may share sessions with colleagues
at your company or tech society**

http://constructioncpm.com/At-A-Glance/at_a_glance2020.htm
(but please give CCC a few weeks to load)

Abstracts MON 11:10 to 12:25

MON 11:10 to 12:25

MON 21 in Majestic Ballroom

Schedule Development Using P6 Professional Download to 1st Report

This session will lead attendees from download of Primavera P6 software from Oracle's website to delivery of the first report to management of the Contractor and the Owner. This session is taught by two veteran users of P6™, Hannah Schumacher, Scheduling Manager, Sundt Construction Inc. www.sundt.com and Charlie Jackson, Vice President of Project Life Span, LLC.

MON 22 in Grand 2

Deltek Schedule Acceleration Techniques

Projects often run late, either due to work variances or predictions of future risk events' impact. In both cases, in order to meet commitments the schedule must be "crashed" in an attempt to accelerate remaining work to recover from delays. Traditionally, project acceleration is an arduous trial and error process, with the team accepting the first version of a modified plan that meets the target dates. Often, this "crashing" process causes significant collateral damage to the schedule in terms of unrealistic expectations of concurrent work, significant reductions in float, and overworked team members. During this session, we will review commonly utilized methods for crashing schedules, their strengths and weaknesses, and discuss best practices for project acceleration. Presented by Jarod Maloney, Deltek



MON 23 in Grand 3

Introduction to Elecosoft Powerproject Schedule Tool for Planners

See how Elecosoft Powerproject makes scheduling easier and more cost effective. Find out why Elecosoft Powerproject (aka Asta) is being adopted throughout the US by construction companies of all sizes. Hear how firms like Saunders Construction, Encore Electric and PCS have improved performance, gained widespread use and reduced training costs by turning to Elecosoft Powerproject. All, while also saving on license costs. Elecosoft Powerproject is the only construction-specific scheduling software offered with concurrent licensing which allows multiple users on a team to share one license. We'll show you how innovative features like Elecosoft Powerproject's unique "drag & drop" functionality make scheduling faster and more enjoyable. Come see how easy Elecosoft Powerproject is to learn and use, how it's powerful features were built with you in mind, and how it performs more reliably than other scheduling options everyday ... all over the world. Presented by Mary Williams



Lean and CPM Scheduling... together at last

Find out more at [**oracle.com/
industries/construction-engineering/**](https://oracle.com/industries/construction-engineering/)

ORACLE
Construction
and Engineering

Abstracts MON 11:10 to 12:25

MON 24 in Grand 4

Really Understanding MSP

Love it or hate it, Microsoft Project (MSP) CPM scheduling software is here to stay. Many construction contracts are now mandating its use. Most people using MSP on construction projects find that MSP is fine for planning the work but very difficult to use when maintaining the status and accurately forecasting project completion.

The good news is that you can 'make' MSP properly reflect complicated status including out-of-sequence progress resembling Retained Logic. The Great News is that in this fourth-generation presentation, we finally made understanding easy. This advanced presentation will explain how to best use MSP in place of P6 or other more status-oriented scheduling software. Presented by Ron Winter, PSP, author of Schedule Analyzer Software.

MON 25 in Grand 5

Schedule Optimization with Spider Software

This presentation reviews the unique methods and tools for CPM schedule analysis and optimization available in the Spider Project software. These include calculation of advanced schedule analysis metrics such as Drag, Flex, and Super Float; automatic adjustment of activity duration for schedule optimization; and creation of the optimal project schedule that takes into account the resource, material supply, space, and financial constraints. Presented by Victoria Shavyrina, PMP and Vladimir Liberzon, PMP, GPSF, GCMF of Spider Project Team.

MON 26 in Expressions Ballroom

Using Schedules for Loss of Productivity Claims

Construction projects are fraught with disputes and litigation, especially loss of productivity disputes. Two new tools will be presented in this talk that will help both avoid and resolve such disputes. The first is the new "ASCE Standard to Identify, Quantify, and Prove Loss of Productivity Claims". The CPM Conference audience will have a "sneak peak" of this new protocol, which is the first such document to achieve ANSI Standard designation. We will also introduce the new, powerful "Build on Vision" software tool that can quickly and thoroughly diagnose schedules and identify problematic project plans. Both tools can be used for "front-end planning" as well as forensic reviews. Presented by Dr. William Ibbs, University of California, Berkeley

Dine with Five New Friends™

Five New Friends™ is a program of the Construction CPM Conference designed to match you and "five new friends" for a dinner with other conference attendees having similar interests based upon your registration survey. While reservations are closed prior to the start of the conference, you may check at our Registration Booth, email info@constructioncpm.com or call 215-313-5110 to check for late cancellations or additional tables becoming available.

Abstracts MON 2:00 to 3:15

MON 31 in Majestic Ballroom

Schedule Updating Using P6 Professional NTP to 1st Update Report

This session will lead attendees in the proper use of Oracle Primavera P6 EPPM from Notice-to-Proceed (or acceptance of the initial baseline schedule) to delivery of the first update report to management of the Contractor and the Owner. This session is taught by two veteran users of P6™, Hannah Schumacher, Sundt Construction Inc. www.sundt.com and Charlie Jackson, Vice President of Project Life Span, LLC.

MON 32 in Grand 2

Better Planning with Open Plan

Finding good planners is becoming increasingly difficult. Deltek Open Plan helps teams improve schedule quality and deliver medium-to-large and/or multiple projects on time and on budget. With multi-project analysis, critical path planning, resource management and risk analysis, join us for this session to discover how Open Plan caters to the differing needs of business, resource and project managers. Seeing is believing, and scheduling just got whole lot easier! By Rob Edwards of Deltek

MON 33 in Grand 3

Introduction to Phase Manager

There's nothing quite so effective as a phase book or phase document for clearly and easily communicating the construction project plan, schedule and work rate, by phases, right on the site plan. Fabien Gaboriau, experienced planning manager, presents three different case studies, how it is easy and powerful to use Phase Manager to create a dynamic phasing book.

MON 34 in Grand 4

Gaining Competitive Advantage

Artificial Intelligence (AI) can play a pivotal role in one of the highest-risk and most competitive areas for contractors — before construction begins. By using AI, risk intelligence (RI) and advanced cost/schedule forecasting, a company can quickly gain competitive advantage and protect against margin erosion. Presented by Keith Anderson of InEight.

MON 35 in Grand 5

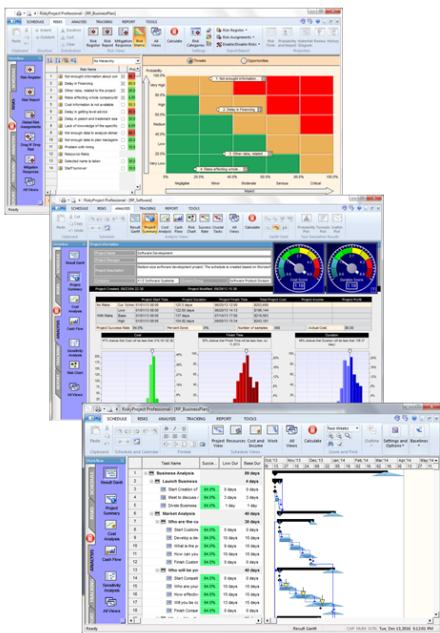
Managing and Communicating Project Challenges Through Linear Planning

TILOS is the distance based planning tool used globally for alignment based projects. It connects the geography and constructability issues of a project with the schedule (what is built, when and where), and allows the users to view the entire construction execution scope. TILOS integrates data from engineering, surveying, environmental, regulatory, and construction into a comprehensive plan. Presented by Daniel Cadena

MON 36 in Expressions Ballroom

GAO Schedule Assessment Guide

Come learn of the 10 Best Practices and 4 Required Characteristics of an acceptable schedule, as suggested by the GAO.



**INTAVER
INSTITUTE**

RiskyProject

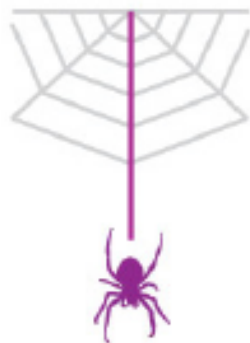
**Project Risk Analysis and Risk Management
Software for Microsoft Project, Primavera, and
Standalone**

- Project Scheduling
- Risk Register
- Risk Matrix
- Monte Carlo schedule risk analysis
- Probabilistic cost and cash flow analysis
- Sensitivity Analysis
- Risk Mitigations
- Risk Correlations
- Project Portfolio Risk Analysis
- Probabilistic and Weather Calendars
- ... and more

see us at Booth 28

**Integrated Project and Portfolio
Management Software**
that meets any requirements and exceeds
any expectations

**Spider
Project Team**



Learn why in Russia Spider Project is known as most
powerful and functional professional PM software and is
used in most large scale programs.

see us at Booth 22

Abstracts MON 3:35 to 4:50

MON 3:35 to 4:50

MON 41 in Majestic Ballroom

What Arbitrators look for in Scheduling Experts

Presented by Richard H. Steen, Esq. Mr. Steen has more than 30 years experience in ADR and the construction industry, including claims and disputes valued in the billions of dollars on public and private projects worldwide. He has been selected and has served as an arbitrator or mediator in more than 1500 disputes in a wide variety of commercial, construction, professional liability and insurance matters. Will he find YOU persuasive?

MON 42 in Grand 2 TBD TBD.

Keep Posted at <http://www.constructioncpm.com/At-A-Glance/> for latest UPDATE

MON 43 in Grand 3

Next Level Schedule Analytics and Automation

Automation, Bots, AI and Machine Learning are disrupting the CPM scheduling landscape and fixing problems that only computers can fix. Learn how the Construction CPM Scheduling community is being impacted by technology and how to manage through this change. Presented by Michael Pink of SmartPM

Table 9



CDP[®]

Expertise, Solutions, and People For Success

Visit CDP
in Rhythms
Foyer to
learn more
about our
scheduling
solutions
and cloud
hosting.

On-Time, On-Budget Projects. The Latest in Scheduling.

CDP offers unique project management and scheduling solutions to meet the needs of your business, including:

- Cloud hosting
- Implementation support
- Training classes
- Oracle Primavera P6
- Scheduling support
- Phoenix CPM Construction Scheduling Software
- Kahua
- Risk analysis
- Custom report writing

ORACLE Gold Partner

phoenix
PROJECT MANAGER

kahua

www.cdp-inc.com | 800-648-0527

Abstracts MON 3:35 to 4:50

MON 44 in Grand 4

How to Make Sense of Advanced Work Packaging (AWP)

Learn how AWP truly does align all planning disciplines to help drive execution efficiency. This presentation details the building blocks from Construction Work Areas to engineering, procurement and construction work packages, all the way to the workforce daily execution steps (otherwise known as Installation Work Packages). Presented by Paul Self, Executive Vice President of Project Planning & Scheduling Solutions, InEight

MON 45 in Grand 5

Wave Transfer Planning with MSProject, P6, NetPoint & NetRisk

Strategies to Transfer Manufacturing Operations to a Newly Built International Pharmaceutical Facility. Understanding the costs, benefits, and risks of multiple solutions requires complex schedule and cost modeling. The overall strategy requires identifying resource limitations, schedule risks and impacts, and the prioritization of needs early, and continuously throughout the dynamic project. The team used multiple scheduling tools to support the planning/schedule development phases such as MS Project, NetPoint and P6; actively monitor and control the overall master schedule for the program in P6; and conduct regular schedule risk assessment using NetRisk. Presented by Angel Arvelo, PMP, LEED AP, Senior Director, PMA

MON 46 in Expressions Ballroom

A CLEAN SLATE: Building a Scheduling Program from the Ground Up

What would you do if you were given the opportunity to build the scheduling program at a major construction company from scratch? Would you: Use Primavera P6 or take a chance on another scheduling program? Hire schedulers or train Project Managers and Superintendents? Truly build a program from scratch or implement what you have done elsewhere? It sounds like the dream opportunity, but be careful what you wish for. In April of 2019 this speaker was given just that opportunity. This presentation will chronicle the entire process of building a comprehensive scheduling program and department from inception through institution, examining all of the choices, roadblocks, pitfalls, failures, and successes encountered along the way. Presented by Jeff Milo, PSP | Senior Scheduling Manager of Landmark Construction, LLC. and 2019/2020 Chair, AACE Planning & Scheduling Subcommittee

**Following Classes Enjoy Our
Happy Hour Reception**

**Sponsored by
Plotnick Professional Services**

“if your project must be done on time .. we wrote the book”



MON 8:30 to 11:00 PM at B Terrace

Abstracts TUE 8:00 to 9:15

TUE 00 in Majestic Ballroom

Comments by Kyle Phillips of AGC – What Contractors Need from Schedulers

Keynote by Gui Ponce de Leon, PhD, LEED AP, PE, PMP –

Software Should Serve the Project

Abstracts TUE 9:45 to 11:00

TUE 11 in Majestic Ballroom Litigation Track Keynote

I am hiring an expert for a delay and disruption case. Why should I choose you?

Presented by Dan Lund III of Phelps Dunbar, New Orleans LA

TUE 12 in Grand 2

Benchmarking As-Built Lags

As-built schedules contain more than dates when an activity actually started and finished – they also contain that same information for relationships. Relationships have as-built start and finish dates. This gives rise to a different kind of schedule forensic analysis; As-Built Lag Analysis. How well are planned versus actual relationship lags managed? No one knows because no one measures them. Hundreds of papers have been written about planned versus actual activity durations. How come no one has thought to measure planned versus actual relationship durations? Now, someone has. Presented by Ron Winter, PSP, Schedule Analyzer Software.

TUE 13 in Grand 3

Differentiate Yourself and Charge More for Scheduling Services

Special presentation by Dan Carimanco of Caramanico Maguire Associates

Abstracts TUE 9:45 to 11:00

TUE 13 in Grand 3

Differentiate Yourself and Charge More for Scheduling Services

Special presentation by Dan Carimanico of Caramanico Maguire Associates

TUE 14 in Grand 4

Connecting Cost, Schedule, and BIM

The relationship between scope, cost, and schedule has been called the iron triangle of project management, yet the construction industry continues to struggle in managing these basic fundamentals. Attend this session to learn what Oracle Construction and Engineering is doing to solve this industry problem with Primavera P6, Primavera Cloud, Aconex Connected Cost, and Aconex Models. Presented by Scott Esposito of Oracle

TUE 15 in Grand 5

The Habits of Highly Effective Scheduling

Projects are becoming more and more complex and costly, requiring greater attention to the management of both time and resources. Various skill sets have become segmented. However, some of the principles used in scheduling bring those overall project management skills and needs together. These principles can be used to effectively communicate the plan, establish production goals, monitor and manage progress and manage change in projects and programs. Presented by Sylvia M Donado, PMP and President-elect at Project Management Institute

TUE 16 in Expressions Ballroom

GAO Agile Assessment Guide

The GAO will explain their newly released Guide for reporting upon Agile projects.

Deltek

Powering
Project
Success

Align owner/contractor processes and criteria with Deltek Acumen Touchstone, a single, centralized repository for storing, evaluating and benchmarking project schedules.

Learn More! Visit

Deltek.com/AcumenTouchstoneDemo



Abstracts TUE 11:10 to 12:25

TUE 21 in Majestic Ballroom

SUSPEND WORK and “..REMAIN ON STANDBY..”

The contract has been awarded and notice to proceed issued. Work has started. The owner issues a suspension of work directive and the contractor shuts down all or a designated portion of the work awaiting the owner's return to work order. The contractor believes they are entitled to recover all delay and all time related delay damages. Is the contractor right? Is the owner is liable for the delay damages? We will examine why owners should have a Suspension of Work clause in contracts and how these clauses work. We will examine five key court cases decided between 1996 and 2015 that establish the key requirements necessary to collect damages arising from a suspension of work directive. Presented by James G. Zack, Jr., CCM, CFCC, FAACE, FIGPC, FRICS, PMP - Principal James Zack Consulting, LLC.

TUE 22 in Grand 2

Critical Path Analysis with Oracle P6; Hidden Features

Learn to perform Critical Path analysis with P6. Many features and tools exist to make this task easier. Using the software live, see how to handle multiple milestones and multiple calendars. Understand what's important to display, and what's not. Format reports to display the critical paths in simple and effective fashion. Presented by by Jonathan Japka, PMP.

TUE 23 in Grand 3

How to complete a 4 hour planning session in 40 minutes

Analysis of a schedule has always been overwhelming for non-schedulers especially when the schedule has countless activities. This presentation showcases how to summarize large schedules involving 10,000+ activities from P6 or MS Project to effectively communicate schedule-related issues that can be readily understood by senior management and executives. Presented by Reniz Moosa PMP of PMA Consultants..



Abstracts TUE 11:10 to 12:25

TUE 24 in Grand 4

Controls and Metrics for Unit Price Contracts

Unit Price construction contracts can pose a challenge for project controls and reporting. American Electric Power (AEP) has developed some tools and processes to effectively track these contracts. Presentation will cover the different tools used and a Unit Price index used to track project performance. Presented by Charles Blankenbiller of American Electric Power

TUE 25 in Grand 5

Optimizing the Schedule Workflow on Projects and Programs

Capo Projects Group (CPG) provides scalable, multi-disciplinary services to the engineering, construction, architecture, public works and utilities industries. Our team was tasked with improving our client's efficiency and profitability by increasing the value of current scheduling, controls and technology deployments. This presentation will show how CPG used CPM[axis to provide full scale project and program scheduling support with integrated field schedules, improved as-built documentation, and program level analytics on the Los Angeles World Airports (LAX) \$300M LULEP progressive design build program. Presented by Greg McFarlane and Chris McKee of Capo Projects Group

TUE 26 in Expressions Ballroom

Connecting CPM and Lean Scheduling

Construction productivity has remained stagnate for decades, while manufacturing productivity has nearly doubled in the same frame. Oracle Construction & Engineering introduced the first integrated Critical Path Method and Lean Scheduling solution to specifically address this problem. Attend this session to learn how effective collaboration results in more predictable, reliable, and productive construction projects. Presented by Mark Jenkins of Oracle

ORACLE

Construction and Engineering

Abstracts TUE 2:00 to 3:15

TUE 31 in Majestic Ballroom

Latest on AACE 29RP-03

The AACE's Recommended Practice on Forensic Schedule Analyses, RP29R-03, is the culmination of over fifteen years of work by dozens, if not hundreds of individuals. First published in 2007, it has grown in detail and scope and acceptance in many quarters. Presented by primary authors, Kenji Hoshino and Chris Carson.

TUE 32 in Grand 2

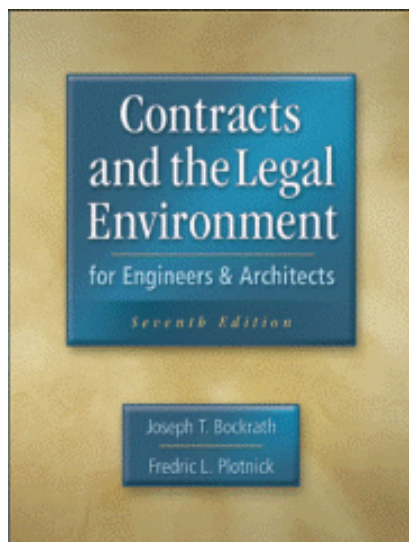
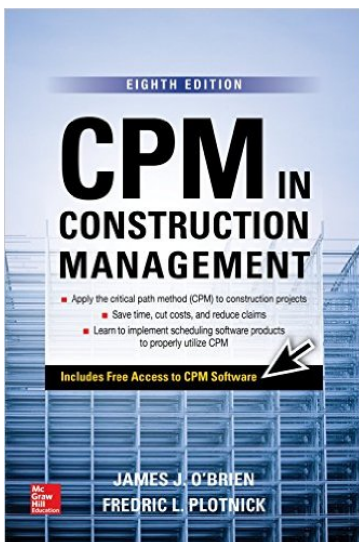
Steve's Scheduling-Innovation Workshop

Join Steve for an interesting session of untamed ideas that could shape the future of scheduling. He will demonstrate a couple of his past scheduling inventions, share a couple of his new ideas, and open the floor to audience critique and brainstorming. He'll lead a discussion among this unique group of scheduling experts to innovate and solve some of our industry's problems. Steve may return next year with a few of your ideas and feedback developed into new working prototypes. We won't see different results until we try things we've never tried before. Presented by Steve Moore of Robins & Morton

TUE 33 in Grand 3

Project Risk Analysis Secrets and Tricks

Are we capable to accurately predict the risks affecting project schedules? How do we determine realistic cost and duration of the project while taking into account all risks? What if project risks affect not only cost and schedule, but safety, security, quality, and other project objectives? How do we determine if risk should be mitigated? This presentation will help you to answer these and other questions related to project risk analysis. Based real-life examples you will learn simple steps how to perform project risk analysis and establish meaningful risk analysis process in your organization. Presented by Lev Virine of RiskyProject





Ron Winter Consulting LLC

**Call us at +01 904-624-7016 or
email at
Ron@RonWinterConsulting.com**

see us at Table #30 and our Smoke & Mirror Reception

Abstracts TUE 2:00 to 3:15

TUE 34 in Grand 4

Cost and Schedule Integration

Setting separate targets for cost and schedule makes project decision making complex and not reliable. In our presentation we will discuss setting integrated project success criterion and requirements to the schedule model that may help to optimize project management decisions basing on both cost and schedule considerations. Presented by Vladimir Liberzon, PMP, GPSF, GCMF, Augustin Purnus, PMP, and Liubov Guzhova of Spider Project Team

TUE 35 in Grand 5

What's New in Scheduling

Discover what's new in Oracle Construction and Engineering's planning and scheduling offerings. By attending this session, you will • Learn the advantage of the scheduling innovations being delivered by Oracle to improve project performance. • See how Oracle combines both CPM and Lean scheduling methodologies to more reliably deliver projects on time and under budget. • Understand what's ahead for Oracle Primavera Cloud and P6 as we share our scheduling roadmap. Presented by Jen Coyle of Oracle

TUE 36 in Expressions Ballroom

Why linear projects needs linear schedules and how to create from your CPM
Linear Schedules, offer an effective and visual representation of project schedules. An entire project schedule can be represented on a single Linear Schedule page, yet still identify production rates, sequencing, conflicts, resourcing and physical constraints across the entire project. There are several methods for producing Linear Schedules that help improve schedule communication and analysis to the wider audience of project stakeholders. By using the authors 20yrs of experience, this presentation using Turbo-Chart, offers a practical method of extending traditional CPM schedules to produce Linear Schedules. Tips and techniques on using this method to help planners and schedulers to improve scheduling outcomes will also be presented. Presented by Santosh Bhat



BRG

Berkeley Research Group

see us at Table #33

Abstracts TUE 3:35 to 4:50

TUE 41 in Majestic Ballroom

Anticipated Hot Topics in Construction Law for the 2020s

Now that we are starting the Twenty-Twenties, many current and future topics in construction law are expected to trend during the next ten years, including insurance issues, arbitration issues, surety bond issues, and others. Come hear attorney Martha Curtis of the Sher Garner law firm in New Orleans discuss what those hot construction topics are anticipated to be in the next decade and how to prepare for them in your practice. Presented by Martha Curtis of Sher Garner Cahill Richter Klein & Hilbert, LLC

TUE 42 in Grand 2

Construction Phasing for a Bid, Execution Plan or Claim

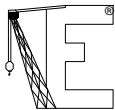
Phase documents are used as a tool to communicate throughout the life of the project: Public consultation phase, Bids and proposals, To stakeholders during construction, during claims. Fabien Gaboriau, experienced planning manager, presents different real case studies done with Phase Manager

TUE 43 in Grand 3

Construction Project Planning – The Sequel

Effective construction project planning begins and ends with the efforts of the project team. The project team must have a thorough understanding of the scope and technical requirements in the contract documents in order to develop a complete and accurate project baseline schedule. This presentation will focus on the necessary elements of project planning and the actions required by the project team to translate that planning into an effective Time Management tool. How well the project team develops the project plan will contribute to the on-time success or failure of the project. Presented by Edward E. (Ted) Douglas III, CCP, PSP, FAACE, Honorary Life Member

Claims of Delay or Disruption? We Wrote the Book



EnProMaC
Engineering & Property
Management Consultants, Inc.

261 Old York Road – Suite #732
Jenkintown PA 19046

www.enpromac.com info@enpromac.com 215-885-3733

Abstracts TUE 3:35 to 4:50

TUE 44 in Grand 4

Dissecting the New Microsoft Project in the Cloud

he new Project has evolved into a more sophisticated planning solution that can manage large construction projects while managing cost-benefits in relation to the market. Find out how one of the largest construction companies in the world leveraged Microsoft Project for process planning, resource management, and portfolio optimization. Presented by Larry Mead of Prospan

TUE 45 in Grand 5

Latest Happenings - Statewide Enterprise Scheduling System

Using an Enterprise P6 System to Manage Transportation Agency Projects Statewide Case study on how a transportation agency took control of \$3B in yearly construction contracts statewide. Come hear about how the enterprise system is set up, what it does, how it was implemented, how it was used, and how we encouraged usage by agency employees, contractors, and consultants. You will learn about the high level reporting that is performed, how we maintain quality schedules, and the daily operations that are performed to help manage the projects. You will also learn about training programs that are conducted and lessons learned. Presented by Sherif Elkhoully and Matthew Freih of AECOM.

TUE 46 in Expressions Ballroom

Reserved for the AACEi Planning & Scheduling Subcommittee

Open to all attendees - come see how AACE solicits input from planning & scheduling professionals

Tuesday Evening Entertainment

Happy Hour & Light Dinner – Bus to EPCOT

Dessert & Fireworks – Disney Extra Hours

Late Night at Ragland Road

Sponsored by

EnProMaC

Choreographers for the Construction IndustrySM

Abstracts for WED 8:00 TO 10:40

Enjoy Wednesday Breakfast sponsored by

SmartPM

TUE 01 in Majestic Ballroom

The Mock Trial – Judge John M Marshall Presiding

Judge Marshall's court is again in session for this year's Mock Trial presentation. So top off your cup of coffee, be seated, and enjoy the show! Judge Marshall will teach the LAW. Two attorneys will be providing examples of trial techniques, setting traps for unwary experts. Two experts will be providing examples of bad and good behavior. One fact witness with actual knowledge will entertain as he provides the facts of the case to Judge Marshall and the jury (you!)

Abstracts WED 8:00 TO 9:15

WED 02 in Grand 2

Primavera P6 EPPM Database Administrators' Tips & Tricks

This session is focused on Primavera P6 EPPM/PPM Database and System Administrators and will provide database considerations for your P6 implementation. We will discuss tips and tricks you can use to troubleshoot, improve and/or stabilize your environment. Our focus will be on the latest 18.8.x and 19.12.x on-premise releases of P6 EPPM using Oracle Database, but will also include discussions and considerations including Microsoft SQL Server and other versions of P6. Presented by Carl Meilahn of Oracle.

WED 03 in Grand 3

Cloud Priorities and Vision for Project CIOs

If Cloud priorities are top of mind for 2020, then don't miss this! Our presentation shares how we are aligning with IT and project teams and assisting with selecting the perfect cloud type and cloud hosting provider for digital transformation success. Presented by Jim Smith, EVP – Cloud Solutions, LoadSpring Solutions



WED 04 in Grand 4 TBD TBD. Keep Posted at

WED 05 in Grand 5 TBD TBD. <http://www.constructioncpm.com/At-A-Glance/>

WED 06 in Grand 6 TBD TBD. for latest UPDATE

Abstracts WED 9:25 TO 10:40

WED 11 in Majestic Ballroom
Continuation of Mock Trial

WED 12 in Grand 2

Program and Portfolio Management Best Practices

It all comes down to: Are you doing the right projects for your organization? Learn how Oracle Construction & Engineering is enabling companies to deliver value through a strategy-first approach to selecting the optimum set of investments. By combining repeatable governance processes, and consistent evaluation metrics with the ability to capture and analyze all relevant data, Portfolio and Program Planning can enable organizations to achieve strategic goals and deliver value. From choosing investment proposals, funding strong business cases, performing “what-if” scenarios, and analyzing performance progress, Portfolio Management guides organizations to strategically prioritize, plan, and execute enterprise portfolios. Presented by Kristin Desha of Oracle

WED 13 in Grand 3

Resource Constrained Scheduling Challenges

Project schedule model is the tool for informed decision making that shall answer to any what if question. In this presentation we will discuss problems, methods and tools for creating, scheduling and analyzing project schedule model that takes into account all existing constraints and assigned resource properties. Presented by Vladimir Liberzon, PMP, GPSF, GCMF, Augustin Purnus, PMP, and Liubov Guzhova of Spider Project Team

WED 14 in Grand 4 TBD TBD. Keep Posted at

WED 15 in Grand 5 TBD TBD. <http://www.constructioncpm.com/At-A-Glance/>

WED 16 in Grand 6 TBD TBD. for latest UPDATE

AGC 2020 Associated General Contractors of America
CONVENTION

March 9 - 12, 2020

The Bellagio Resort & Casino
Las Vegas, NV

Abstracts WED 11:00 TO 12:15

WED 21 in Majestic Ballroom

The Nuts and Bolts of Collapsed As Built

While Collapsed As-Built analysis has not enjoyed the same popularity and acceptance as other methods, there are still situations where it is a viable choice for the analyst. While AACE 29R-03 defines the process, its description of each step of the procedure is general in nature. This presentation will outline practical methods for preparing a pre-collapsed model from an As Built schedule; for dealing with out of sequence progress; and for making a staged collapse to determine relative impact of differing issues. Presented by Greg Hall of Kiewit Corporation.

WED 22 in Grand 2

Real Time Coordination - USA to Australia - Two Continents - One Team

We have set out the logic of what needs to be done but must now coordinate when is best to be done. This often requires coordination from teams in different locations, across town or across the globe. See how PMA NetPoint allows detail coordination, "what ifs," and compromise in this live action session. Presented by Tim Mather

WED 23 in Grand 3

Mastering Out-of-Sequence Progress

Identifying out-of-sequence progress in the real-world can be the key to understanding disruption and productivity loss. This is a current CPM "hot topic". Now significant, new information and unusual situations involving out-of-sequence progress have recently been discovered. Last year, better out-of-sequence progress reporting using P6 software was introduced. This year learn how to add out-of-sequence progress reporting to Microsoft Project. The instructions included here are all that is needed to add this feature to any MS Project software (and for free) Presented by Ron Winter, PSP, author of Schedule Analyzer Software

WED 24 in Grand 4

Oracle Town Hall on Next Generation of Scheduling

We start with a panel discussion listening to industry experts discuss exciting new trends and technologies that are transforming the construction industry including AI & BIM. Then a town hall type forum where Primavera experts are on hand to answer ANY questions you have related to the Primavera products and strategy. We will then ask your feedback and suggestions including the good, the bad, and the ugly! Presented by Eileen Shurmann

WED 25 in Grand 5

The Top Ten Approaches to Achieving Planned Final Completion Date

Many projects today fail when it comes to completing on the planned final completion date. In keeping with the authors' top-ranked series of papers and presentations on ten approaches to various aspects of project controls, the authors will provide their favorite and most effective for enhancing your project's chances. Learn from the aggregation of two lifetimes of successful projects promoted by the authors. Presented by Chris Carson, FRICS, FAACE, FGPC, PSP, CEP, DRMP, CCM, PMP and Glen R. Palmer, PSP, CFCC, FGPC

WED 26 in Expressions Ballroom

TBD TBD.

Abstracts WED 1:45 to 3:00

WED 31 in Majestic Ballroom

Ethics and the Expert

A Panel Discussion Led by Judge Marshall

WED 32 in Grand 2

Elecosoft Roadmap/TownHall

Asta Powerproject & More

WED 33 in Grand 3

Schedule Simulation – The Lego Experience

4D scheduling is not easy, and the multitude of other project requirements can be difficult to meet. If the project team is given a 4D schedule they might not be aware of how to use it, and many of the people who create 4D schedules do not have experience in using them. During this session, Lego Blocks will be used to simulate a 4D experience and to demonstrate the benefits of an active 4D process over traditional scheduling. The participants will have to maintain quality, schedule and scope while building their structure. Please bring your laptop, so you can actually use the models to build. After the session, participants will have a better understanding of how 4D, BIM and Lean are incorporated into traditional practices, how they can improve project performance, why it can be difficult for teams to adopt new practices, and what can be done to improve our VDC practices. All this, while playing with Legos!! Presented by Ben Crosby

WED 34 in Grand 4

Delay Analysis – Valuable Tool or Black Magic?

Construction delays are common. Given that CPM scheduling is not new and scheduling tools are very advanced, you would think that the analysis of delays would be relatively simple and straightforward – but it is not! Is Delay Analysis a Valuable Tool or merely Black Magic? Learn why! Presented by Brian Van Lenten of HK>A.

WED 35 in Grand 5

Modeling how Project Managers Typically React to Schedule Overruns

It is common to find that project owners, contractors and managers react to prospective schedule overruns by adding resources to try to make up time. This behavior leads to more cost overruns as it moderates (hopefully) the schedule overruns. However, analysts typically model the current plan as if the manager will not react if the schedule is jeopardized. This is not realistic. During a Monte Carlo simulation conditional branching can test for missing a detailed engineering finish date. Depending on that test, a branch of the schedule that models the management decision as anticipated is chosen. The richness of the possible responses to schedule risk events will be discussed. Presented by David T. Hulett, Ph.D., FAACE of Hulett & Associates, LLC, and Michael Trumper, MBA of Intaver Institute.

WED 36 in Expressions Ballroom TBD TBD.

Keep Posted at <http://www.constructioncpm.com/At-A-Glance/> for latest UPDATE

Abstracts WED 3:20 to 4:35

WED 41 in Majestic Ballroom

The Great Debate Part Three

Dilemma of the Prospective Time Impact Analysis

A contractor's scheduling manager and an owner's representative discuss their interests, goals, actions, and **approaches to preparing and evaluating Prospective TIAs**. Topics include: timely time extensions, estimated impacts (fragnets), TIA methodology, actual progress, concurrency, and pacing. Although presented as debate, the goal is to seek solutions that benefit all parties. Moderated by Presented by Jeff Milo, PSP | Senior Scheduling Manager of Landmark Construction, LLC. and 2019/2020 Chair, AACE Planning & Scheduling Subcommittee

WED 42 in Grand 2 TBD TBD.

Keep Posted at <http://www.constructioncpm.com/At-A-Glance/> for latest UPDATE

WED 43 in Grand 3

Schedule Simulation – The Lego Experience – Part 2

WED 44 in Grand 4

Effective Document Management

Oracle has always understood that effective document management is a critical element in delivering successful projects – central to both Unifier and Aconex are their document control capabilities. Come hear how Oracle stays true to this understanding today, and how Oracle is leveraging technologies such as AI and machine learning so that even as projects become bigger and more complex, teams can still effectively manage documents ensuring success.

WED 45 in Grand 5 TBD TBD. Keep Posted for latest UPDATE

WED 46 in Grand 6 TBD TBD. <http://www.constructioncpm.com/At-A-Glance/>





the **REAL ALTERNATIVE**

for construction scheduling



phoe-nix [fee-niks]
-noun

1. A bird in Egyptian mythology that lived in the desert for 500 years and then consumed itself by fire, later to rise renewed from its ashes.

2. The last word in CPM Scheduling Software. . .

phoenix
PROJECT MANAGER

The logo for Phoenix Project Manager. It features the word "phoenix" in a large, lowercase, sans-serif font, with "PROJECT MANAGER" in a smaller, uppercase, sans-serif font below it. To the right of the text is a stylized graphic of a phoenix bird, rendered in orange and yellow, with its wings spread as if rising from the flames.