



**Welcome to
Construction CPM Conference
B Resort - Downtown Disney Springs
Disney World Florida
January 15 - 18 2023**



Welcome to the Construction CPM Conference

A word from our founder:

“Welcome to the only conference where the focus is on maximizing time efficiency in construction projects. Our goal is to provide:

- training in a variety of software products so that you may go home conversant in three or more,
- classes on advanced theory in both planning & scheduling, and extensions in risk, cost, EVM, CAD, BIM, litigation and other bleeding edge topics,
- a place to showcase project success stories with especial attention to lessons learned, and
- an entertaining backdrop for networking and socializing with your colleagues in our field of practice.

The success of our conference is yours. I would like to thank all of our attendees, speakers, exhibitors and sponsors for making this the industry event to support and attend. While we are not technically an organization, your year-round activities creating and contributing to our social media sites make you all members. I have been truly honored to be able to assist our community with your Construction CPM Conference.”

Fredric Plotnick

CCC 2023

Live and Virtual

Live at the B Resort at Disney World
January 15 to 18 2023

Majestic Meeting Room to be Simulcast
to share with colleagues

MON: <https://drexel.zoom.us/81621260019>

TUE: <https://drexel.zoom.us/88582683383>

WED: <https://drexel.zoom.us/86302815046>

Watch Sessions from your hotel room

Invite colleagues back home to tune in for FREE

These and Other Sessions to be Recorded
for you and colleagues after our event at

http://constructioncpm.com/At-A-Glance/at_a_glance2022.htm#2023

BIO PDF PPR VID

View 2021-22 Recordings some with Live Q&A at

http://constructioncpm.com/At-A-Glance/at_a_glance2022.htm

As well as many Oldies from Past CCC Years

Table of Contents

Maps of Conference Floor Layout	6-7
List of Exhibitors and Sponsors	8
Program: Monday	9
Menu by Chef of B Resort	10-11
Program: Tuesday	13
Program: Wednesday	14
Abstracts: Monday 8:00 – 9:15 am	16
Abstracts: Monday 9:45 - 11 am	16
Abstracts: Monday 11:10 am - 12:25 pm	19
Abstracts: Monday 2:00 - 3:15 pm	21
Abstracts: Monday 3:35 - 4:50 pm	23
Abstracts: Tuesday 8:00 - 9:15 am	25
Abstracts: Tuesday 9:45 - 11 am	25
Abstracts: Tuesday 11:10 am - 12:25 pm	27
Abstracts: Tuesday 2:00 – 3:15 pm	28
Abstracts: Tuesday 3:35 - 4:50 pm	31
Abstracts: Wednesday 8:00 - 9:15 am	32
Abstracts: Wednesday 9:25 - 10:40 am	33
Abstracts: Wednesday 11:00 - 12:15 am	33
Abstracts: Wednesday 1:45 - 3:00 pm	34
Abstracts: Wednesday 3:20 - 4:35 pm	34

See you again
January 14-17

2024

at a Resort TBD

ORLANDO -- NEW ORLEANS -- SAN ANTONIO
WATCH FOR ANNOUNCEMENT SOON
at www.ConstructionCPM.com

Welcome Reception

Sponsored by



Sunday, January 15th

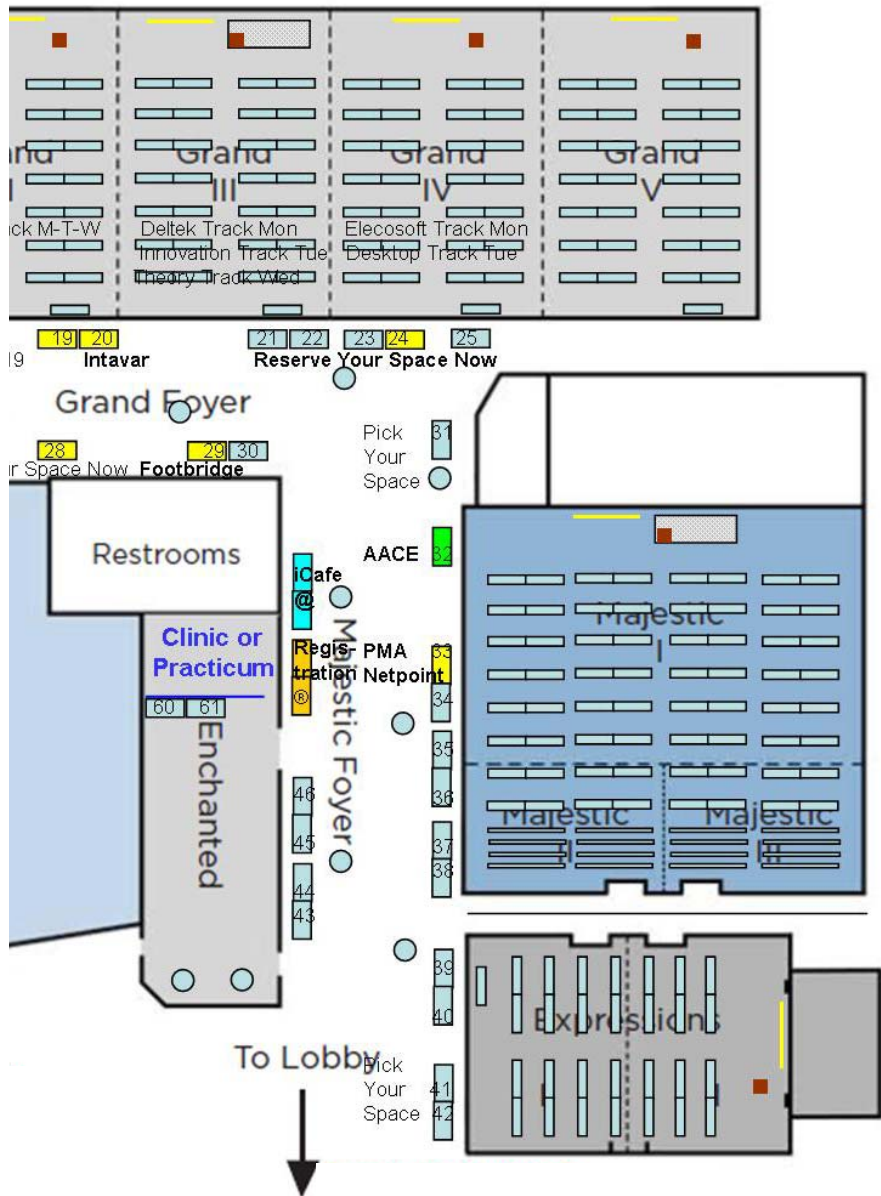
6:00 – 10:00 pm

B Terrace

2023 Floorplan



Grand Ballroom



List of Exhibitors and Sponsors

Exhibit Tables	Ad on Page
03	Steelray p11
04	Elecosoft p22
05-06	SmartPM p 8
09	Allucent p30
09¾	Plotnick Professional Services p20
10	Construction CPM Conference Services p20
11	Planflow p00
13	Schedule Analyzer p15
16	Deltek p23
20	Intevar p22
29	Footbridge p27
32	AACE p16

ADDITIONAL EXHIBITORS MAY BE ADDED after we go to press

Check <http://www.constructioncpm.com/images/BLayout.jpg>
for latest UPDATE



CPM Scheduling Innovation
Meets Automation

-  Analyze Schedule Quality & Integrity
-  Diagnose Project Performance
-  Forecast Milestone Completion Dates
-  Forensic Delay Analysis



SUNDAY PROGRAM

3 – 9 pm	Registration
6 – 10 pm	Phoenix Welcome Reception – B Terrace

MONDAY PROGRAM

6:30 – 8 am	Hot Breakfast – sponsored by Deltek
8 – 9:15 am	Opening Remarks and Keynote Presentation
9:15 – 9:45 am	Coffee Break

9:45 – 11 am	Breakout Sessions
Majestic	Carson & Palmer Top Ten 2023
Grand 2	Oracle's Smart Construction Platform
Grand 3	Automate with Acumen Touchstone
Grand 4	Elecosoft Powerproject
Grand 5	Really Understand Microsoft Project
Expressions	Become a Better Superintendent

11:10 am – 12:25 pm	Breakout Sessions
Majestic	Whar Arbitrators Look for in Experts
Grand 2	Schedule Development Using P6s
Grand 3	Deltek Schedule Acceleration Techniques
Grand 4	Elecosoft Powerproject BIM 4D Planning
Grand 5	CPM/P6/Lean/Takt/Pull Planning
Expressions	Jim Zack on Scheduling Best Practices

12:25 – 2 pm	Lunch served in Grand 1 Ballroom
---------------------	---

2:00 -3:15 pm	Breakout Sessions
Majestic	GAO Schedule Assessment Guide
Grand 2	Schedule Updating Using P6
Grand 3	Deltek Open Plan
Grand 4	Update Directly from the Field
Grand 5	Reviewing the S Curve
Expressions	Why Should I Do That?

Menu by Chef of B Resort

WELCOME RECEPTION by Phoenix 6:00-10:00PM Sunday January 19

Butler Passed Oriental Spring Rolls with Thai Chili Sauce, Spanakopita: spinach, feta in phyllo; Assortment of three fresh ceviches: salmon, shrimp and scallop; Charcuterie: Salami, mortadella, soppressata, prosciutto and bresaola accompanied by marinated olives, roasted vegetables and fresh baguette; Gourmet Sliders: Crab Cake with Chipotle Mayonnaise on Petite Brioche Cheddar Roll, Beef Brisket with Sweet Onion and House Barbeque on Petite Brioche Onion Poppy Roll, Polynesian Luau Pulled Pork on Coconut Roll; BBQ CARVING STATION with Smoked Bone-In Prime Rib of Beef with Kansas City Sauce and Texas Mustard Sauce on Brioche Silver Dollar Rolls – and two drink tickets

Plated Breakfast by Deltek 6.30-8:00AM Monday January 20

Seasonal Sliced Fruits and Vine-Ripened Berries; Freshly Baked Muffins and Sweet Pastries; Artisan Preserves, Honey and House Made Butter; Yogurt Parfaits with Fresh Berries and House Made Granola; Imported Cheese and Charcuterie Plate; Croissants with Cured Ham, Signature Sausages and Bacon; Freshly Brewed Joffrey's Regular & Decaf Coffee, a Selection of Harney & Sons Teas, Freshly Squeezed Florida Orange and other Juices.

Continuous coffee with added assorted pastries to 11:15 AM

Plated Lunch 12.25 PM Monday January 20

Mixed Petite Greens with Roasted Tomato, Cucumbers, Shredded Carrots and Brioche Croutons with Choice of Dressing; Warm Rolls and B Signature Butter; Pasta with Alfredo, Basil Pesto or Roasted Red Pepper Pesto Sauce; Florida Key Lime Pie

PM Break Monday January 20

Ice Tea, Lemonade, Assorted Soft Drinks, Red Bull, Variety of Chips and Snack Bars

HAPPY HOUR RECEPTION by SmartPM 4:50-6:30PM Monday January 21

Butler Passed Eggplant Bruschetta with olive oil and tomato pomodoro, Mac and Cheese Fritters; Platter of international and domestic cheeses served with fresh vine-ripened berries, assorted crackers and crostini – and two drink tickets

Plated Breakfast 6.30-8:00 AM Tuesday January 21

Custom Breakfast Buffet of Scrambled Eggs and Bacon; Freshly Baked Muffins and Croissants with Fresh Fruit Preserves and Signature Butters; Freshly Brewed Joffrey's Regular and Decaf Coffee, Harney & Sons Teas, Freshly Squeezed Florida and other Juices.

Continuous coffee with added assorted pastries to 11:15 AM

Plated Lunch 12.25 PM Tuesday January 21

Warm Rolls and B Signature Butter; Grilled Chicken Caesar Salad- Romaine, Grilled Herb Marinated Chicken, Breast, Shaved Parmesean, Blistered Cherry Tomatoes, Garlic, and Anchovy Dressing; Flourless Chocolate Cake with Espresso Sauce

Break PM Tuesday January 21

Ice Tea, Lemonade, Assorted Soft Drinks, Red Bull, Variety of Chips and Snack Bars

HAPPY HOUR RECEPTION 4:50-6:30PM Tuesday January 21

Assortment of salmon, shrimp and scallop ceviches; Trio of Artisan Flatbreads Station (Stanislaus County Tomato-Mozzarella-Basil, Italian Sausage with crisp fried garlic and roasted red & green peppers, and Thick cut pepperoni with crushed tomatoes and provolone cheese; Gourmet Sliders including Crab Cake with Chipotle Mayonnaise on Petite Brioche Cheddar Roll, Beef Brisket with Sweet Onion and House Barbeque on Petite Brioche Onion Poppy Roll, and Polynesian Luau Pulled Pork on Coconut Roll – and two drink tickets

Menu by Chef of B Resort

Plated Breakfast 6.30-8:00 AM Wednesday January 22

Custom Breakfast Buffet of Scrambled Eggs and Sausage Links; Freshly Baked Muffins and Croissants with Fresh Fruit Preserves and Signature Butters; Freshly Squeezed Florida Orange Juice, Chilled Apple and Cranberry Juices.

Continuous coffee with added assorted pastries to 11:15 AM

Plated Lunch 12.25 PM Wednesday January 22

BOX LUNCH choice of: Herb Roasted Turkey, Muenster, Lettuce, Tomato on Seven Grain Whole Wheat Roll; Black Forest Shaved Ham, Gruyere, Lettuce, Tomato on Sour Dough Kaiser Bun; Roast Beef with Brie, Lettuce, Tomato on a Croissant; or Greek Salad Spinach Wrap; and each box lunch to come with Red Potato Salad, Whole Banana, Sun Chips a Chocolate Chip Cookie and a Soft Drink or Bottled Water

Enjoy in our Food Court with our Exhibitors, or Pool Side

Break PM Wednesday January 22

Ice Tea, Lemonade, Assorted Soft Drinks, Red Bull, Variety of Chips and Snack Bars

Farewell Snack 4:35 PM January 22

Ice Cream Novelty Bar and Frozen Fruit Bars

Attendees with Special Needs please inform at Registration Desk

steelray

Understand Your Schedule

Over budget? Missed milestones? We can help.

Our suite of products allow you to easily view and analyze project schedules.

Learn more at www.steelray.com

see us at Booth 03

Scorecards
Enterprise Grouped Matrix
Global Scorecard
Validation
Government
DCMA 14 Point Assessment
14 Point Assessment
DCMA 3.0 Assessment

MONDAY PROGRAM CONT'D

3:15 – 3:35 pm Afternoon Break

3:35 – 4:50 pm Breakout Sessions

Majestic	Construction Schedule Oversight SmartPM
Grand 2	Migrating Desktop Server to Cloud
Grand 3	Deltak OpenPlan
Grand 4	TBD
Grand 5	Spider Team Project Tutorial
Expressions	Scheduling for Subcontractors

4:50 – 6:30 pm Networking Reception sponsored by SmartPM



7:00 – 9:00 pm Dine on your own or with Five New Friends

**9:00 – 11:00 pm Smoke & Mirror Reception at B Terrace
and a cigar courtesy of Ron Winter**



TUESDAY PROGRAM

6:30 – 8 am **Hot Breakfast**
8 – 9:15 am **Opening Remarks and Keynote Presentations**
9:15 – 9:45 am **Coffee Break**

9:45 – 11 am **Breakout Sessions**
Majestic **Litigation Track Keynote by Dan Lund**
Grand 2 **Comparing P6 to Primavera Cloud**
Grand 3 **The Future of Scheduling**
Grand 4 **Micro Planner X-Pert**
Grand 5 **Soon We Will Not be Able to Build Anything**

11:10 am – 12:25 pm **Breakout Sessions**
Majestic **Challenging the Expert Panel Discussion**
Grand 2 **Primavera Cloud Tutorial**
Grand 3 **Construction Photography**
Grand 4 **Powerproject Basic Training**
Grand 5 **No More Schedule Update Meetings**

12:25 – 2 pm **Lunch**

2:00 – 3:15 pm **Breakout Sessions**
Majestic **Latest on AACE 29RP-03**
Grand 2 **Oracle's Task Management Solution**
Grand 3 **GC's Use of Four Software Programs**
Grand 4 **Collaborate with Powerproject Vision**
Grand 5 **Learning with Legos Part I**

3:15 – 3:35 pm **Afternoon Break**

3:35 – 4:50 pm **Breakout Sessions**
Majestic **Jim Zack on Differing Site Conditions**
Grand 2 **Panel Discussion on P6 Cloud**
Grand 3 **Deltak Roadmap and Town Hall**
Grand 4 **Earned Value and Risk Analysis in Powerproject**
Grand 5 **Learning with Legos Part II**

4:50 – 6:30 pm **Networking Reception sponsored by Plotnick**
4:50 – 10:00 pm **Enjoy Your Evening at a Disney Park**

WEDNESDAY PROGRAM

- 6:30 – 8 am Hot Breakfast**
- 8 – 10:40 am Mock Trial – Judge Marshall Presiding**
Our courtroom is in Majestic Ballroom
- 8:00 – 9:15 am Breakout Sessions**
Grand 2 Admin Tips & Tricks for Oracle Products
Grand 3 Project Critical Path Drag
Grand 4 Cost & Resource Management in Powerproject
- 9:25 –10:40 am Breakout Sessions**
Majestic Mock Trial Continued
Grand 2 Oracle Program and Portfolio Management
Grand 3 GAO Guideline for Agile Scheduling
Grand 4 Pull Planning with ASTA Connect
- 10:40 – 11:00 am Coffee Break**
- 11:00 – 12:15 pm Breakout Sessions**
Majestic Survey Judicial Positions of Published Analyses
Grand 2 Oracle Town Hall
Grand 3 TBD
Grand 4 Powerproject Code Libraries
- 12:15 – 1:45 pm Lunch**
- 1:45 – 3:00 pm Breakout Sessions**
Majestic Why MIP 3.3 May be Right for You
Grand 2 Oracle TBD
Grand 3 Schedule Maintenance Revision ReBaselining
Grand 4 Elecosoft Roadmap and Town Hall
- 3:00 – 3:20 Afternoon Break**
- 3:20 – 4:35 pm Breakout Sessions**
Majestic Ethics and the Expert
Grand 2 Oracle Effective Document Management
Grand 3 The Great Debate
- 4:25 – 4:50pm Farewell with a sweet treat from Exhibitors**

The oldest P6 add-on company has taught over 1,500 users how to analyze P6 schedules. Why not join them?

20 years and counting, Schedule Analyzer Software continues to give new insights into the complex analysis of construction CPM schedules. Complete your analysis in 4 hours or less. Find out what the other party is going to complain about before they get the chance.

Best of all, do all of this at a fraction of what the others charge. Perpetual, concurrent licenses with free customer service at a third of the price. Look for our table for more important information.



Abstracts MON 8:00 to 9:15

Opening Remarks

from our host Fred Plotnick and video address of our first leader James O'Brien

Keynote by Shoshanna Fraizinger, CCP, PMP, President-Elect of AACE on Importance of Professional Level Certifications and Licensure

Shoshanna is pleased that 40% of attendees at Construction CPM Conference are members of the Association for Advancement of Cost Engineers International. And he hopes to convince our other 60% to join. While the primary goals of CCC are to educate and train, AACE's primary goal is to bring forth new knowledge and subject to peer review and debate. As Senior Vice-President of Turner & Townsend, Chris can share why our industry and the industries we serve need both AACE and CCC.



MON 9:45 to 11:00

MON 11 in Majestic Ballroom

The Top Ten Worst Situations With Proven Project Controls Solutions

Many situations occur in project delivery which appear to be unmanageable or impossible to resolve, and the authors Christopher W. Carson and Glen R. Palmer have a long history of experience in successfully pulling off resolution of what appear to be impossible or very difficult situations. These situations range from project problems that arise from Owner or Contractor actions or inactions, or even third-party interference, and risk negative impacts to the project goals. Some of these were projects where the authors were brought in after the CM team recognized that they were in trouble and some were projects that the authors participated as team members and provided the solutions.

MON 12 in Grand 2

Introduction to Oracle's Smart Construction Platform

Learn about Oracle CEGBU's Smart Construction Platform, which combines Primavera Cloud, Aconex, Textura, Unifier, Preconstruction, and the Construction Intelligence Cloud in one integrated cloud platform to provide end-to-end project and portfolio management. Presented by Chad Wattendorf, Oracle

MON 13 in Grand 3

Deltek Automate Your Schedule Review Process with Acumen Touchstone

How much time do you spend manually evaluating schedules for quality and achievability? Not only is this process time consuming, and often unreliable, lessons learned frequently die with the project. Join us to discover how to streamline the schedule review process with Deltek Acumen's newest module, Touchstone! We will cover various schedule quality checks that can be done using Acumen Fuse, as well as how to use the metric criteria that you set up in the tool to automate schedule checks with Acumen Touchstone. Combining these two Acumen modules gives you the ability to perform in depth schedule evaluations with Fuse, and consistently enforce your project schedule criteria by automating the collection, review, approval and storage of schedules in Touchstone. Presented by Jarod Maloney, Deltek

MON 14 in Grand 4

Unique features of Elecosoft Powerproject

Asta Powerproject includes many unique features to help you setup and manage your projects efficiently to ensure project completion on time, within budget, with the necessary resources available to perform the work. Presented by Mary Williams

MON 15 in Grand 5

Really Understanding Microsoft Project

Microsoft Project (MSP) CPM scheduling software has long been the 'darling' of IT industries but now many construction contracts are mandating its use. Most people using MSP on construction projects find that MSP is fine for planning the work but very difficult to use when maintaining the status and accurately forecasting project completion. We can show you how to make this task easier.

The good news is that you can 'make' MSP properly reflect complicated status including out-of-sequence progress resembling Retained Logic. This advanced presentation will explain how to best use MSP in place of other status-oriented scheduling software. Presented by Ron Winter.

MON 16 in Expressions Ballroom

Why I Should / Shouldn't Do That

Last year's discussion was so lively we decided to do it again! This interactive discussion will focus on the advantages and disadvantages of using various techniques in current construction scheduling practice based on the practical realities of most construction projects. Using "real life" video examples and hypothetical situations, several topics will be explored: •How should the weather calendar be developed and presented in the schedule? •Whether the schedule should be cost loaded, and, if so, how? •Under what circumstances should the P6 progress override feature be used? •Whether and how should redundant logic be used? •Methods of resource loading the schedule. •When to balance crew loads vs. using soft logic? •When and how to use constraints? •Whether there is any circumstance to use a negative lag? •Whether to use finish-to-start relationships with lags? Presented by Charles V. Choyce, Jr., MRICS, PSP, PMP, CM-LEAN, CFCC, Managing Director of BRG and Robert Lamb, PSP, LEED AP BD+C, CM-LEAN, Associate Director of BRG, Benjamin Crosby, Director, Virtual Design and Construction, W.G. Yates Construction Co., and Drew Polahar, Scheduling Manager, Blaine Construction Co.

Continuing Education Credits



The Florida Bar

651 East Jefferson Street
Tallahassee, FL 32399-2300

Joshua E. Doyle
Executive Director

850/561-5600
www.FLORIDABAR.org

Certificate of Accreditation for Continuing Legal Education

Certification of Accreditation for Continuing Legal Education

Reference Number: 2300117N
Title: Construction CPM Conference 2023
Level: Intermediate
Approval Period: 01/16/2023 - 07/31/2024

CLE Credits

General	19.5
Ethics	1.5
Technology	16.5

Certification Credits

Construction Law	19.5
------------------	------

Application Made to Louisiana Bar for 18 Credit Hours
Professional Engineers may report 22.5 PDH in Model States
50 minute contact hours per NCEES
Also approved by AACE and PMI

DID YOU KNOW?

You may view sessions you missed
You may review sessions you liked
You may share sessions with colleagues
at your company or tech society
http://constructioncpm.com/At-A-Glance/at_a_glance2022.htm
(but please give CCC a few weeks to load)

Abstracts MON 11:10 to 12:25

MON 11:10 to 12:25

MON 21 in Majestic Ballroom

What Arbitrators Look for in Scheduling Experts

Presented by Richard H. Steen, Esq., who has has more than 40 years of experience in ADR and the construction industry, including claims and disputes valued in the billions of dollars on public and private projects worldwide. He has been selected and has served as an arbitrator or mediator in more than 2000 disputes in a wide variety of commercial, construction, professional liability and insurance matters. Will he find YOU persuasive?

MON 22 in Grand 2

Schedule Development Using P6 Professional Download to 1st Report

This session will lead attendees from download of Primavera P6 software from Oracle's website to delivery of the first report to management of the Contractor and the Owner. This session is taught by two veteran users of P6™, Hannah Schumacher, Scheduling Manager, Sundt Construction Inc. www.sundt.com and Charlie Jackson, Vice President of Project Life Span, LLC.

MON 23 in Grand 3

Deltek Schedule Acceleration Techniques

Projects often run late, either due to work variances or predictions of future risk events' impact. In both cases, in order to meet commitments the schedule must be "crashed" in an attempt to accelerate remaining work to recover from delays. Traditionally, project acceleration is an arduous trial and error process, with the team accepting the first version of a modified plan that meets the target dates. Often, this "crashing" process causes significant collateral damage to the schedule in terms of unrealistic expectations of concurrent work, significant reductions in float, and overworked team members. During this session, we will review commonly utilized methods for crashing schedules, their strengths and weaknesses, and discuss best practices for project acceleration. Presented by Deltek

The Deltek logo is displayed in a large, bold, blue sans-serif font. The word "Deltek" is followed by a registered trademark symbol (®) in a small circle.

Abstracts MON 11:10 to 12:25

MON 24 in Grand 4

Powerproject BIM 4D Planning Presented by Chris Ray

MON 25 in Grand 5

CPM/P6, Pull & Weekly Work Planning All Working Together

Many of you, may be aware that there is a revolution happening in the planning and scheduling environment, one I will call the “Lean Construction Movement.” In some cases, proponents of this movement state that CPM is dead, and it provides no value to construction projects, it actually hurts them. The statistics above have been stated ad nauseum, to prove this point. In some cases, CPM and P6 have been confused to be the same thing. On the other hand, there are individuals and companies in the movement that embrace the idea that we can build off the past and integrate CPM with Lean and are helping their organizations to do this in a collaborative manner. We have great news for you! We have been working with many of the Nation’s largest contractors to meld these two methods together into one seamless process. We have proven that taken together they provide an even more powerful method for driving better jobsite planning, scheduling, efficiency, collaboration, and accountability. Presented by Allucent

MON 26 in Expressions Ballroom

Become a Better Superintendent – Learn to Speak Scheduler

Construction projects are fraught with disputes and litigation, especially loss of productivity disputes. Two new tools will be presented in this talk that will help both avoid and resolve such disputes. The first is the new “ASCE Standard to Identify, Quantify, and Prove Loss of Productivity Claims”. The CPM Conference audience will have a “sneak peak” of this new protocol, which is the first such document to achieve ANSI Standard designation. We will also introduce the new, powerful “Build on Vision” software tool that can quickly and thoroughly diagnose schedules and identify problematic project plans. Both tools can be used for “front-end planning” as well as forensic reviews. Presented by Dr. William Ibbs, University of California, Berkeley

Dine with Five New Friends™

Five New Friends™ is a program of the Construction CPM Conference designed to match you and “five new friends” for a dinner with other conference attendees having similar interests based upon your registration survey. While reservations are closed prior to the start of the conference, you may check at our Registration Booth, email info@constructioncpm.com or call 215-880-8899 to check for late cancellations or additional tables becoming available.

Abstracts MON 2:00 to 3:15

MON 31 in Majestic Ballroom GAO Schedule Assessment Guide

The U.S. Government Accountability Office is responsible for assisting the Congress in its oversight of the federal government. The GAO Schedule Assessment Guide presents ten best practices associated with developing and maintaining a reliable, high-quality schedule and develops guiding principles for auditors to evaluate certain aspects of government programs.

MON 32 in Grand 2 Schedule Updating Using P6 Professional NTP to 1st Update Report

This session will lead attendees in the proper use of Oracle Primavera P6 EPPM from Notice-to-Proceed (or acceptance of the initial baseline schedule) to delivery of the first update report to management of the Contractor and the Owner. This session is taught by two veteran users of P6™, Hannah Schumacher, Sundt Construction Inc. www.sundt.com and Charlie Jackson, Vice President of Project Life Span, LLC.

MON 33 in Grand 3 Better Planning with Open Plan

Finding good planners is becoming increasingly difficult. Deltek Open Plan helps teams improve schedule quality and deliver medium-to-large and/or multiple projects on time and on budget. With multi-project analysis, critical path planning, resource management and risk analysis, join us for this session to discover how Open Plan caters to the differing needs of business, resource and project managers. Seeing is believing, and scheduling just got whole lot easier! By Rob Edwards of Deltek

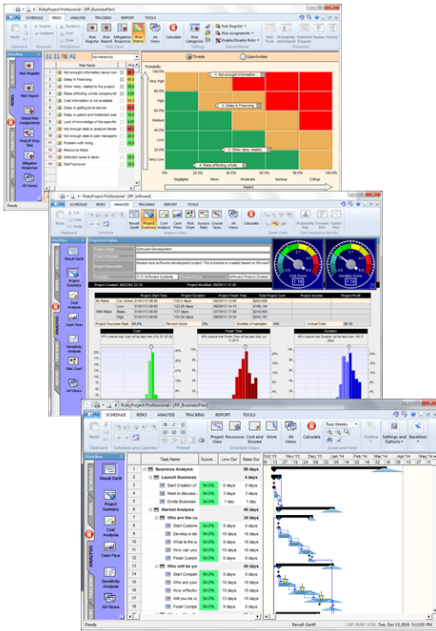
MON 34 in Grand 4 Update Directly from the Field with Powerproject Site Progress Mobile Presented by Megan DePoty.

MON 35 in Grand 5 Schedule Maintenance Revision Re-Baselining - Where To Draw the Lines?

Maintaining a project schedule involves updating for progress but can also involve changing durations and/or sequencing to reflect planning changes and work-arounds. For delays or major changes in scope, a recovery plan may require revising the original plan to the extent that “re-baselining” the project schedule becomes necessary. This presentation will attempt to differentiate between schedule maintenance, schedule revisions, and schedule re-baselining, with the intent to provide guidance to schedule specification writers (and the schedulers who have to live with them!) Presented by John Orr, PSP FAACE

MON 36 in Expressions Ballroom WHY SHOULD I DO THAT? - WHY SHOULDN'T I DO THAT?

his interactive discussion will focus on the advantages and disadvantages of using various techniques in current construction scheduling practice based on the practical realities of most construction projects. Using “real life” video examples and hypothetical situations, several hot topics will be explored. Presented by Charles Choyce, Jr., Benjamin Crosby, Anton Sibrin, Drew Polahar.



RiskyProject

**Project Risk Analysis and Risk Management
Software for Microsoft Project, Primavera, and
Standalone**

- Project Scheduling
- Risk Register
- Risk Matrix
- Monte Carlo schedule risk analysis
- Probabilistic cost and cash flow analysis
- Sensitivity Analysis
- Risk Mitigations
- Risk Correlations
- Project Portfolio Risk Analysis
- Probabilistic and Weather Calendars
- ... and more

see us at Booth 20



Founded in 1895, Elecosoft provides software integrated solutions to support the lifecycle of buildings and facilities across a range of industries to drive efficient operations.

Within Elecosoft product portfolio we have:

Powerproject

Powerproject is Elecosoft's award-winning planning and project management software for the built industry. Powerproject enables companies to deliver successful projects by managing productivity, risk, and resources, and reducing delays and disruptions.

- Visualize programs from day one
- Track project progress in real-time
- Improve access to critical information

Powerproject Vision

Powerproject Vision is a cloud platform to centrally manage and automate your planning and scheduling needs, so you have complete visibility of your entire portfolio from anywhere.

- Bring transparency, control and integrity to your Powerproject programs
- Centralized Schedule Management Platform
- Business Intelligence Dashboards
- Seamless User Experience

Asta Connect

Asta Connect solves the challenges of short-term, on-site planning, collaboration and daily activities progress by connecting project teams with the overall master construction schedule, capturing commitments and delivering key insights on the projects to empower decision making.

- Connect Teams
- Collaborative Planning Boards
- Transformational

elecosoft.com/us/ | Inquiries@elecosoft.com | 1-855-553-2782

see us at Booth 4

Abstracts MON 3:35 to 4:50

MON 3:35 to 4:50

MON 41 in Majestic Ballroom

How to Get the Most Out of Your Schedule Data Using SmartPM

With all the innovation happening within commercial construction, delays & overruns remain the most intractable problem in the industry, resulting in over a trillion dollars of waste annually. Enter the CPM schedule, and more importantly, the data behind it. SmartPM is an AI-powered schedule analytics software that captures and utilizes the data within CPM schedules to transform complex and abstract data into straight-forward, accurate, and concise reporting of crucial factors driving construction projects. This presentation includes a detailed analysis of the SmartPM data gathered from over 20,000 CPM schedules, correlating industry challenges to their solution which lies within the schedule: its data.

MON 42 in Grand 2

Migrating from P6 to Primavera Cloud

Moving from a tried and true solution to a next-generation solution can be daunting, and managing that change effectively is a vital part of that process. Learn more about the ways P6 data can be migrated to Primavera Cloud, and the services Oracle can offer to migrate your data and work with you along the migration path.

MON 43 in Grand 3

Deltek Running Your Project with Open Plan

Deltek.

Powering
Project
Success

Align owner/contractor processes and criteria with Deltek Acumen Touchstone, a single, centralized repository for storing, evaluating and benchmarking project schedules.

Learn More! Visit
Deltek.com/AcumenTouchstoneDemo

see us at Booth 16



Abstracts MON 3:35 to 4:50

MON 44 in Grand 4

TBD

MON 45 in Grand 5

Schedule Optimization with Spider Software

Spider Project is a powerful professional project management tool for successful projects and portfolio delivery. It supports all traditional methods and offers unique approaches and functions that have no analogues in other software packages: Resource-constrained schedule optimization, corporate norms, parallel budgets, trend analysis and many others. This presentation demonstrates a unique approach for schedule development and project control based on Success Driven Project Management methodology and Spider Project's unique features. Presented by Alex Lyaschenko, PMP P3O AgilePM

MON 46 in Expressions Ballroom

Scheduling for Subcontractors

Scheduling for Subcontractors is a very different type of scheduling than that performed for Owners or General Contractors. In many ways, the very nature of the schedules and the tools and measurements used to create, monitor, and evaluate a CPM schedule for a subcontractor is entirely different than that used for an Owner or General Contractor.

This presentation explores the nature of those differences in a construction environment. It has advice and insights that are applicable to those who deal with subcontractors as well those who schedule or wish to schedule for this unique type of challenging work. Presented by Ron Winter

**Following Classes Enjoy Our
Happy Hour Reception
Sponsored by**





MON 8:30 to 11:00 PM at B Terrace

Abstracts TUE 8:00 to 9:15

TUE 00 in Majestic Ballroom

Dr. Dan Patterson on –

What Else Can a Scheduler Do?

Abstracts TUE 9:45 to 11:00

TUE 11 in Majestic Ballroom Litigation Track Keynote

Presented by Dan Lund III of Phelps Dunbar, New Orleans LA

TUE 12 in Grand 2

Comparing P6 Server to Primavera Cloud

Hate sitting through software presentations where they tell you what it does but never show you the software used in actual real life situations? Curious to really see Oracle's new scheduling tool? This is the presentation for you. Jeff Milo, Senior Operations Manager – Scheduling & Christian Velasco Scheduling Manager at Landmark Construction, has been using Oracle's new scheduling tool Primavera Cloud since April of 2019. Through their involvement in Oracles Early Adopter program they has had unprecedented access to both the software and its developers. In this presentation they will take you on an all access tour of the first scheduling program built by Primavera from the ground up since P3, show you actual schedules built in the software and explain how Landmark Construction uses the tool every day. They will also give an unfiltered review of the software's strengths and shortcomings in comparison to Primavera P6..

Abstracts TUE 9:45 to 11:00

TUE 13 in Grand 3

The Future of Scheduling by Steve Moore

Throughout my career, I have scheduled billions of dollars of work across the United States, for various contractors. Through over a decade of dedicated project controls experience, I have learned to understand and appreciate the wisdom of standard industry practices and theory. I have also witnessed tremendous challenges and shortcomings when applying these principles to reality. These workflows are often held together by imports, exports, work-arounds, and custom spreadsheets. I have tested many tools and systems aimed at bridging these gaps, but which increase complexity and workload. We need tools and methods that bring it all together in a less-disjointed fashion.

TUE 14 in Grand 4

Micro Planner

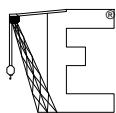
CPM with Points of Time (i-j or similar to old ADM) is still alive. Join developer Raf Dua on the benefits.

TUE 15 in Grand 5

Soon We Will Not Be Able to Build Anything

In last decades cost of large capital projects in North America continue to grow and, in some cases, reached astronomical levels. The recent examples include 2 miles East Side Access project in New York for \$11.1B and California High-Speed Rail for \$93.5B. Many projects are significantly behind budget. Significant escalation of capital cost in North America threatens overall economy as well as ability to maintain infrastructure. At the same time infrastructure projects in Asia and developing countries does not seem to be affected by cost escalation issues at the same extent. What is behind this cost escalation problem? Is it only cost of labor and materials in North America? What is the role of complex regulatory and approval rules in North America? Do project estimators correctly account for risk and uncertainties in such projects? Maybe they intentionally underestimate certain risks to get the projects approved? Or they make mental errors in the process of cost estimation? The main question is how to fix this cost escalation epidemic? Presented by Glen Palmer and Lev Virine.

Claims of Delay or Disruption? We Wrote the Book



EnProMaC

**Engineering & Property
Management Consultants, Inc.**

www.enpromac.com info@enpromac.com 215-885-3733

Abstracts TUE 11:10 to 12:25

TUE 21 in Majestic Ballroom

Challenging the Expert

Panel Discussion including Christopher W. Carson, CEP DRMP PSP FAACE and Dr. Stephen P. Warhoe, PE CCP CFCC FAAC. While developing the expert analysis report is a significant task, testifying about the conclusions drawn from that report can be even more stressful and carries the risk of undermining the report or possibly even disqualification as an expert. Most experts take the time to examine potential mistakes or weaknesses in their approach to testimony, but every attorney has their own approach to questioning the expert.

TUE 22 in Grand 2

Practical Use of Oracle's P6 Cloud

In this presentation Jeff Milo, Senior Operations Manager, & Christian Velasco, Scheduling Manager at Landmark Construction will take you on an even deeper dive into some of the most exciting features of Primavera Cloud. With in depth explanations and live demonstrations of Workspaces, Scenarios, the internal Schedule Comparison tool, Schedule Health Check, and more.

TUE 23 in Grand 3

Construction Photography

Communicating and 'proving' the current construction jobsite status is difficult to do in prose. Pictures are often far more effective as they have the potential to present more information than any other medium. Problematically, they often fail to fully realize their potential in documenting the construction process.

Project schedulers have the inside track on becoming excellent jobsite photographers. All that they need is a better understanding of the equipment and techniques required to take and maintain terrific photos in the harsh environment of construction. Presented by Ron Winter



Abstracts TUE 11:10 to 12:25

TUE 24 in Grand 4

Powerproject Basic Training

Learn quickly to setup, progress, and report on a project plan using Asta Powerproject. Setup a project using a Project Template and add scope using Task Pools. Setup the Work Breakdown Structure, add Tasks using a variety of methods depending on your preferences: type on the activity table, draw on the barchart, task pools, Excel, import from other scheduling solutions. Explore methods for linking tasks and assigning activity codes. Use Powerproject's "Undo" feature to easily perform "what-if" scenarios and correct mistakes. Review strategies to perform Progress Updates and generate reports. Presented by Mary Williams.

TUE 25 in Grand 5

No More Schedule Update Meetings

Following his "CPM is broken" presentation from 2020, Daniel Soliman is back to show you how real-time schedule updates can lead us to a world of bliss without expensive, stressful, and inefficient schedule update meetings. Fully remote is finally an option, with more free time.

Abstracts TUE 2:00 to 3:15

TUE 31 in Majestic Ballroom

Latest on AACE 29RP-03

Kenji is Back With The Future of the RP.

TUE 32 in Grand 2

Primavera Cloud Task Planning – Say Goodbye to Post it Notes

In this presentation Jeff Milo, Senior Operations Manager - Scheduling at Landmark Construction will give an in depth presentation on Primavera Cloud's Task Management tool. This is the first software tool to link the CPM schedule and Lean pull planning/weekly work plans. Join Jeff for an live demonstration of the tool and see how you can get rid of those weekly work plan boards and post it notes.

TUE 33 in Grand 3

A General Contractor's Practical Implementation of Four Software Programs

Are we capable to accurately predict the risks affecting project schedules? How do Including Oracle P6 for creating Forecast Curves - Acumen FUSE for documenting changes in the schedule - Acumen 360 for developing acceleration plans - Smart PM for managing compression analysis during a project's lifetime. Presented by Joshua Wollan of Zachry

TUE 34 in Grand 4

Cost and Schedule Integration

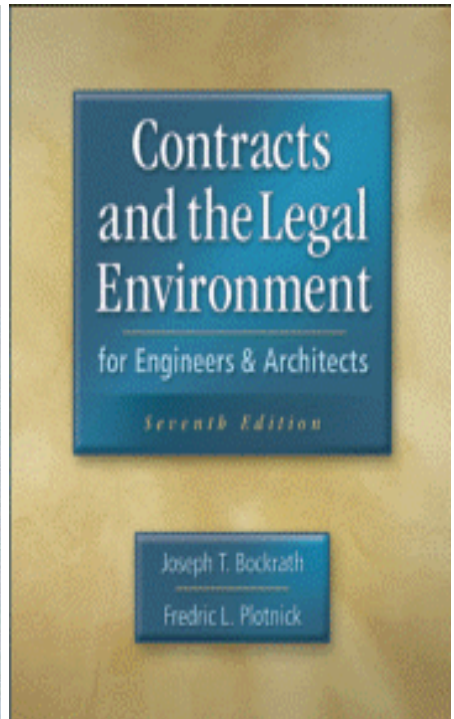
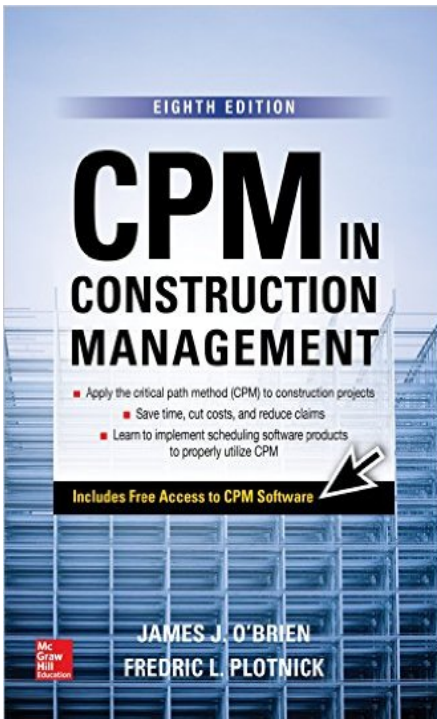
Setting separate targets for cost and schedule makes project decision making complex and not reliable. In our presentation we will discuss setting integrated project success criterion and requirements to the schedule model that may help to optimize project management decisions basing on both cost and schedule considerations. Presented by Vladimir Liberzon, PMP, GPSF, GCMF, Augustin Purnus, PMP, and Liubov Guzhova of Spider Project Team

Abstracts TUE 2:00 to 3:15

TUE 35 in Grand 5

Schedule Simulation – The Lego Experience

4D scheduling is not easy, and the multitude of other project requirements can be difficult to meet. If the project team is given a 4D schedule they might not be aware of how to use it, and many of the people who create 4D schedules do not have experience in using them. During this session, Lego Blocks will be used to simulate a 4D experience and to demonstrate the benefits of an active 4D process over traditional scheduling. The participants will have to maintain quality, schedule and scope while building their structure. Please bring your laptop, so you can actually use the models to build. After the session, participants will have a better understanding of how 4D, BIM and Lean are incorporated into traditional practices, how they can improve project performance, why it can be difficult for teams to adopt new practices, and what can be done to improve our VDC practices. All this, while playing with Legos!! Presented by Ben Crosby.





Ron Winter Consulting LLC

**Call us at +01 904-624-7016 or
email at
Ron@RonWinterConsulting.com**

see us at Table #13 and our Smoke & Mirror Reception

Abstracts TUE 3:35 to 4:50

TUE 41 in Majestic Ballroom

in Zack on Differing Site Conditions

The Differing Site Conditions clause is one of the oldest clauses used in construction contracts, having been created by the U.S. Federal government in 1926. It is generally accepted that the object of the clause is to transfer the risk of latent site conditions to the owner, thus enticing contractors to reduce their contingency cost at the time of bid. The promise of the clause is that if the contractor encounters a “materially different” condition during the execution of the work, the owner will compensate the contractor for the resulting cost and/or time. For 90+ years this standard clause has been used widely in both public and private contracts. Most practitioners in the construction industry think they know what the clause means and how it operates. Over the years, Courts and Boards of Contract Appeals have been slowing changing the interpretation of risk allocation under the clause. A series of Court and Board cases have increased the contractor’s risk concerning differing site conditions. This presentation will discuss the definition of a differing site condition and why there is a need for a Differing Site Conditions clause in a construction

TUE 42 in Grand 2

Panel Discussion Using Primavera Cloud – The Good, The Bad, The Annoying

In this panel discussion four members of Landmark Constructions scheduling group will discuss how using Oracle’s new scheduling software Primavera Cloud has gone from its inception in 2019 to present day form four very different experience levels. With experience that spans from 30 years to 4 months in the profession these panel members will give an insightful look at what its been like converting from P6 to being the first software they have ever used. Bring your questions on this new software as this will be an interactive audience driven discussion

TUE 43 in Grand 3

Deltak Roadmap/TownHall

TUE 44 in Grand 4

Earned Value & Risk Analysis in Powerproject

Presented by Megan DePoty

TUE 45 in Grand 5

Learning with LEGOs by Ben Crosby - continued session

Enjoy Tuesday Evening
at Your Choice of
Disney Amusement Park
as an Attendee of
Construction CPM Conference

Abstracts for WED 8:00 TO 10:40

TUE 01 in Majestic Ballroom

The Mock Trial – Judge John M Marshall Presiding

Judge Marshall's court is again in session for this year's Mock Trial presentation. So top off your cup of coffee, be seated, and enjoy the show! Judge Marshall will teach the LAW. Two attorneys will be providing examples of trial techniques, setting traps for unwary experts. Two experts will be providing examples of bad and good behavior. One fact witness with actual knowledge will entertain as he provides the facts of the case to Judge Marshall and the jury (you!)

Abstracts WED 8:00 TO 9:15

WED 02 in Grand 2

What's New in Primavera P6

While Oracle has put a lot of focus on developing Primavera Cloud in recent years, Oracle continues to invest heavily in Primavera P6. Learn about some of the significant enhancements made to P6 in the last couple of years.

WED 03 in Grand 3

Project Critical Path Drag

When project managers are not ready to accept a Critical Path calculation as a baseline schedule, they need a metric that could help them to optimise the plan. Project Critical Path DRAG metric provides answers to the fundamental questions: - If we want to shorten the project duration, where to start? - Where should we add resources? - Where should we cut scope? - What will the effect be of such actions on the schedule and cost? Presented by Alex Lyaschenko, PMP P3O AgilePM

WED 04 in Grand 4

Cost & Resource Management in Powerproject

Learn how Asta Powerproject can make the complex management of people, plant, and materials simple with easy, visually clear steps. See who is needed against a view of their existing commitments with resource histograms. Balance availability, quantity and effort to maintain schedule and budget. Manage multiple variables including different shift patterns, work rates, overtime, and skills.

Cost and time go hand-in-hand. Manage both together in Powerproject, analyzing budgeted costs, planned costs and actual costs all against time. Model cost data using man-hours, quantity, fixed and variable rates. Report on earned value and maintain change history over time. Presented by Mary Williams

Abstracts WED 9:25 TO 10:40

WED 11 in Majestic Ballroom

Continuation of Mock Trial

WED 12 in Grand 2

What's New in Primavera Cloud

Oracle's next-generation schedule, risk, resource, task, program, and portfolio management solution has seen a lot of major enhancements in recent years. If you haven't kept up with all the changes, learn more about the improvements to Primavera Cloud over the last couple of years.

WED 13 in Grand 3

GAO Guideline on Agile Scheduling

Have you worked on a program using Agile development that told you they didn't need a schedule because they were Agile? If so, come for a discussion of how the US Government Accountability Office (GAO) has published. Specifically, we will review how GAO's 10 scheduling best practices can be applied to schedules developed for Agile programs, as discussed in GAO's Schedule Assessment and Agile Assessment Guides

WED 14 in Grand 4

Pull Planning with Asta Connect Presented by Chris Wray

Abstracts WED 11:00 TO 12:15

WED 21 in Majestic Ballroom

Survey of expert use and judicial positions on published schedule analyses

This presentation will provide an introduction to the different published schedule analyses guidance documents (including AACE International Recommended Practice No. 29R-03; ASCE Standard ANSI/ASCE/CI 67-17; and the SCL Delay and Disruption Protocol); some discussion comparing and contrasting those different guidance documents; and providing a survey of cases where those guidance documents – and / or the specific methodologies included therein – were presented and addressed in legal actions. Presented by Chad Hershman of HinkleyAllen.

WED 22 in Grand 2

Oracle Town Hall on Next Generation of Scheduling

WED 23 in Grand 3

Simplify Your Schedule Presented by Saleh Mubarak

WED 24 in Grand 4

The Power of Baselines & Code Libraries in Powerproject

Presented by Megan DePoty

Abstracts WED 1:45 to 3:00

WED 31 in Majestic Ballroom

As-Is Windows Forensic Analysis - Why MIP 3.3 Might Be Right for You

As work on revising AACE's Recommended Practice 29R-03 (Forensic Schedule Analysis) continues, the Observational/Split Windows Analysis (Method Implementation Protocol 3.4) has emerged as the authors' clear favorite over MIP 3.3, the 'As-Is' Windows Analysis. Because the two methods rely on the same basic techniques, this preference may lead an analyst to conclude that MIP 3.3 is obsolete, but the method is still useful and reliable in many applications. This presentation will discuss valid reasons for selecting MIP 3.3; how to overcome its perceived shortcomings when compared to MIP 3.4; and how, despite the lack of a half-step schedule, an analyst can separate progress-driven variance from non-progress revisions. Presented by Greg Hall of Keiwit

WED 32 in Grand 2

Integrating P6 and Primavera Cloud for Task Management and Risk Analysis

Field Task Management and Advanced Risk Analysis are two of the main differentiators between P6 and Primavera Cloud. While Oracle generally recommends just using Primavera Cloud to manage the CPM schedule, tasks and risks, the reality is that this is not currently possible or desirable for many P6 customers. This presentation will walk through the tools Oracle provides, and that many P6 customers use, to integrate the CPM schedule in P6 with Field Tasks and Risks in Primavera Cloud.

WED 33 in Grand 3

Analyzing S-Curves

S-curves are frequently developed by project schedulers to display costs, resource usage, or other performance measures over time. They are used as a project management tool to provide a graphical representation and comparison of the project plan against actual data. This AACE Recommended Practice illustrates the development and analysis of S-curves with the intent to improve understanding and enhance communication among project participants. The RP also introduces Earned Value analysis and Earned Schedule terminology. The presentation walks through a sample project giving examples of reporting and conclusions and finishes with cautions to keep in mind when analyzing the data. Presented by John P. Orr, PSP FAACE

WED 34 in Grand 4 Elecosoft Roadmap/TownHall

Abstracts WED 3:20 to 4:35

WED 41 in Majestic Ballroom Ethics and the Expert.

A panel discussion led by Judge John Marshall

WED 42 in Grand 2. Effective Document Management by Oracle

WED 43 in Grand 3 The Great Debate



Automated Project Controls

SmartPM™ is a real-time automated project controls platform that translates construction scheduling data and analytics into objective, reliable, and concise visuals all stakeholders can understand and utilize proactively to address critical project risk issues.

Learn more at smartpmtech.com

-  Analyze Schedule Quality & Integrity
-  Diagnose Project Performance
-  Forecast Milestone Completion Dates
-  Forensic Delay Analysis

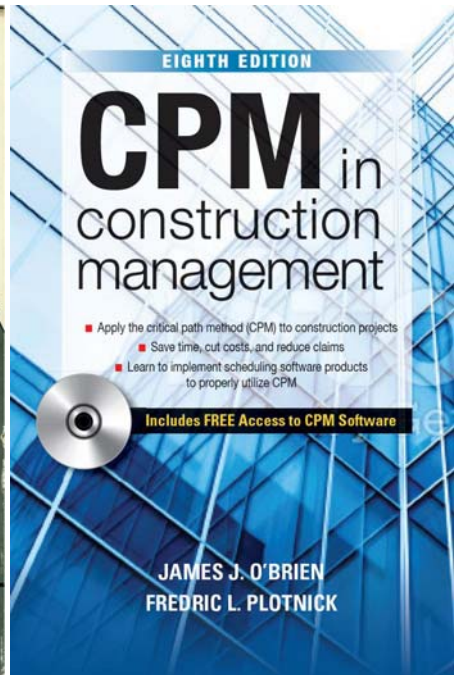
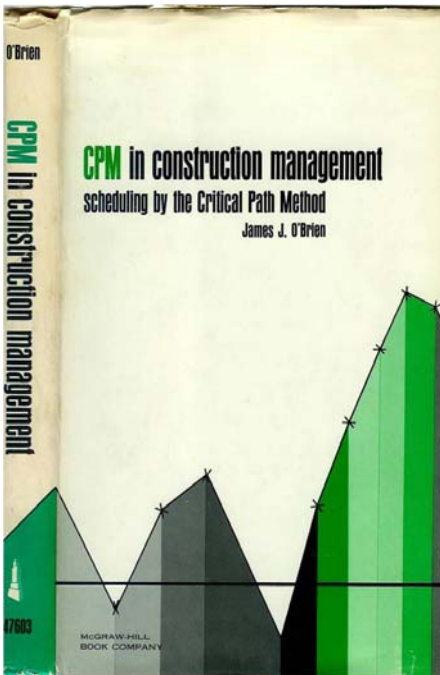
info@smartpmtech.com

404.329.3000

53 Perimeter Center East, Suite 200 Atlanta, GA 30346

To get in touch with a representative, place your smartphone camera here.





1964 to 2023
The Industry Bible